



NAIIS Opening Remarks

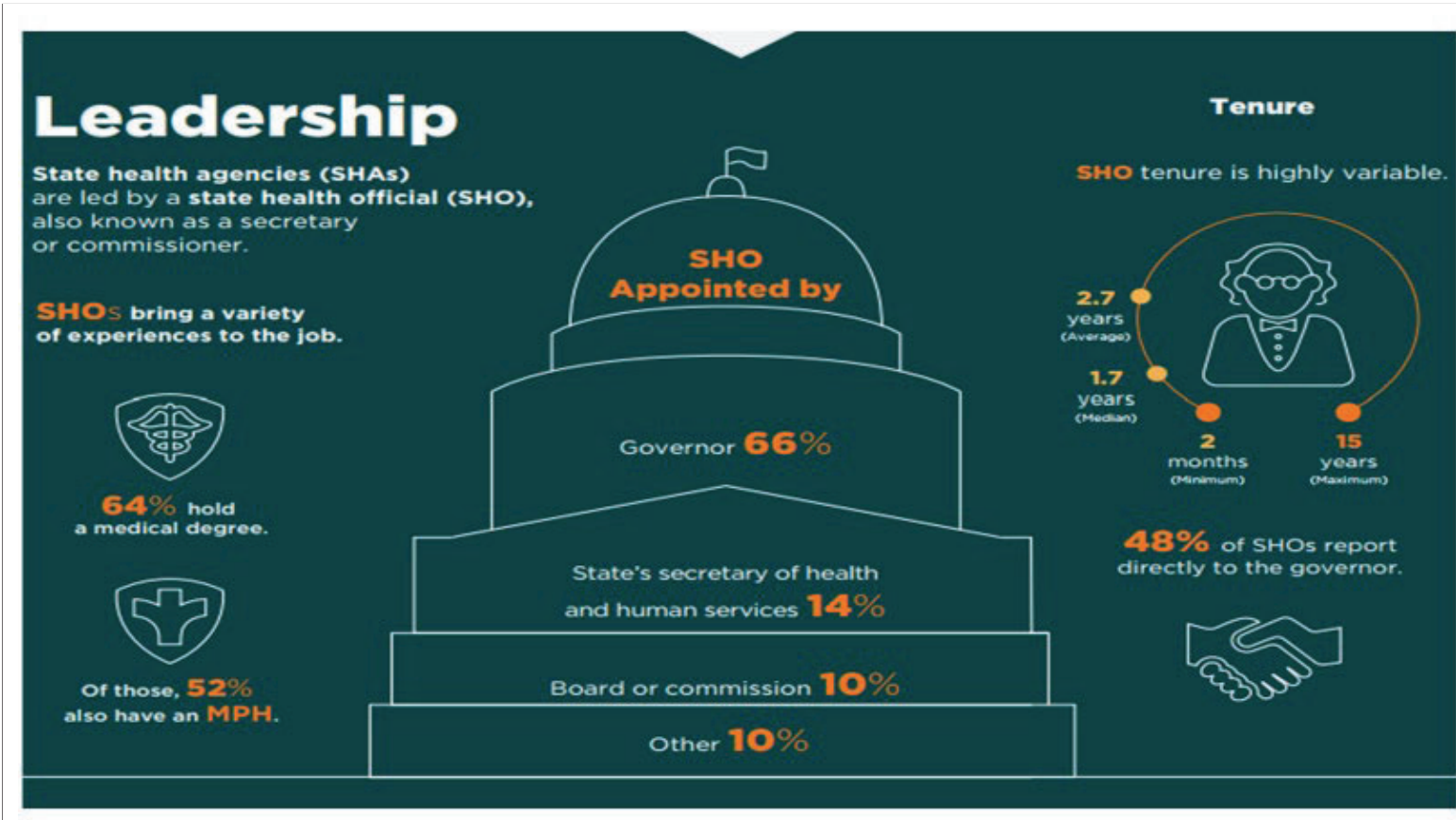
Marcus Plescia, Chief Medical Officer

May 9, 2023

Who is ASTHO

- ASTHO members are the chief health officials from each of the 50 states, DC, and 5 U.S. territories and freely associated states.
- Primary functions:
 - Develop strong and effective public health leaders.
 - Improve public health through capacity building, technical assistance, and thought leadership.
 - Advocate for resources and policies that improve the public's health and well-being.





Our Members

ASTHO's members are responsible for:

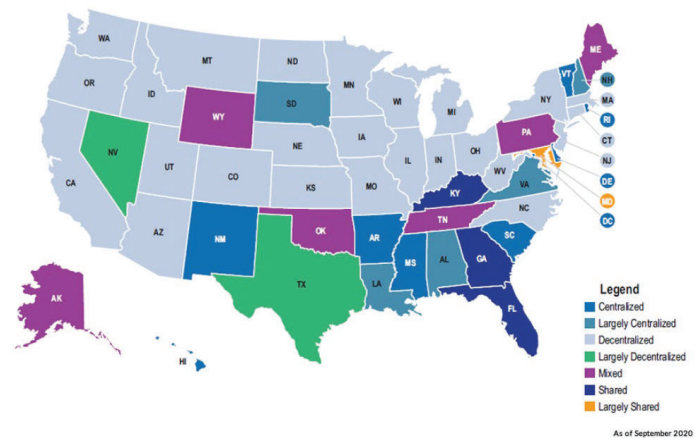
- Formulating and influencing public health policy within their jurisdictions, in collaboration with the state legislature, governor, and other public health professionals.
- Assuring excellence in state and territorial based public health practice.
- Providing public health and health expertise to their elected officials.
- Advancing health equity and optimal health for all.



Governance Structure of Health Agencies

- Health agency governance structures are different, which can have implications for how service are delivered.
 - Centralized
 - Decentralized
 - Mixed
 - Shared

State and Local Health Department Governance Classification Map



Policy Considerations for State/Territorial Health Agencies

STATE OF PUBLIC HEALTH

A Pandemic Success Story: Distribution and Administration of COVID-19 Vaccines

Plescia, Marcus MD, MPH; Hannan, Claire MPH; Baggett, Jessica MPH

Journal of Public Health Management and Practice [28\(6\):p 749-750, November/ December 2022.](#)

https://journals.lww.com/jphmp/Fulltext/2022/11000/A_Pandemic_Success_Story__Distribution_and.21.aspx

Technical Package

- ASTHO identified evidence-based strategies that if collectively implemented by state/territorial health agencies have the potential to make a large impact.
- ASTHO is currently focusing on two high priority strategies:
 - Increase in IIS data completeness, especially around race and ethnicity data
 - Continued provider engagement in vaccination efforts

The screenshot shows the journal article page for "Evidenced-Based Approaches States and Territories Can Implement to Advance Adult Immunization Uptake During the COVID-19 Pandemic and Beyond" in the Journal of Public Health Management & Practice. The page includes a navigation menu with options like "Articles & Issues", "Supplements", "Collections", "Multimedia", "For Authors", and "Journal Info". The article title is prominently displayed, followed by the authors' names: Ottewell, Ashley MPH, MPH; Martin, Kimberly MAT, BSN, RN; Plescia, Marcus MD, MPH. Below the title, there are options for "Outline", "Download", "Cite", "Share", "Favorites", and "Metrics". A "FREE" badge is visible. The abstract text at the bottom states: "The COVID-19 vaccine has highlighted adult vaccination and vaccine hesitancy, particularly in communities of color. Prior to the COVID-19 pandemic, influenza, pneumonia, shingles, and B vaccination rates were well below federal goals, with participation even lower".

Current Trends in IIS Data Entry

- Vaccine providers are entering more race and ethnicity data into the IIS since the start of the COVID-19 pandemic.
- ASTHO is interested in working to maintain and improve these rates in the future.

Race Data

- Cumulative percent race complete (up from 73.67% in February 2021) **79.75%**
- Cumulative percent race unknown (down from 15.90% in February 2021) **8.67%**

Ethnicity Data

- Cumulative percent ethnicity complete (up from 70.73% in February 2021) **82.66%**
- Cumulative percent ethnicity unknown (down from 26.83% in February 2021) **15.70%**



Provider Engagement in Vaccine Programs

- During the COVID-19 pandemic, new providers began offering vaccine.
- ASTHO wants to continue to improve access to vaccines by maintaining or increasing provider enrollment in vaccination programs.

State_shp	total count	Provider Count	Pharmacy Count	Federal Count	Dialysis Count
AK	611	503	75	26	7
AL	2699	1536	865	108	190
AR	2492	1737	604	98	53
AS	6	6	0	0	0
AZ	2992	1630	1032	197	133
CA	15530	9160	4811	945	613
CO	2456	1490	744	142	80
CT	1757	999	656	53	49
DC	289	111	131	27	20
DE	786	556	184	18	28
FL	13339	8793	3752	336	457
FM	9	7	0	2	0
GA	5609	3455	1697	111	346
GU	17	2	2	8	5
HI	553	290	195	31	37
IA	2631	1982	535	63	51
ID	899	600	243	27	29
IL	5651	3318	1777	250	304
IN	3387	2060	1080	78	169
KS	1824	1213	465	82	64
KY	3043	1883	869	166	123
LA	2455	1472	696	95	192
MA	4169	2944	1054	110	61
MD	3104	1908	967	71	158
ME	1456	1113	267	56	20
MH	4	3	0	1	0
MI	6461	4395	1694	173	199
MN	2518	1571	779	57	111
MO	2530	1367	925	94	144
MP	1	1	0	0	0
MS	2206	1654	390	81	80

MT	559	350	139	56	14
NC	5819	3662	1755	164	238
ND	524	448	48	26	2
NE	964	605	291	40	28
NH	847	560	243	24	20
NJ	4370	2369	1732	73	196
NM	1164	732	268	116	48
NV	1001	502	405	39	55
NY	13088	9300	3267	296	225
OH	6319	3948	1919	156	296
OK	2823	2110	517	113	83
OR	2435	1748	503	107	77
PA	6868	3996	2336	217	319
PR	1114	689	312	83	30
PW	6	1	0	5	0
RI	578	388	161	23	6
SC	2638	1590	817	74	157
SD	616	437	116	58	5
TN	3134	1583	1255	89	205
TX	15648	10777	3846	318	707
UT	992	578	346	43	25
VA	4562	2861	1371	120	210
VI	56	44	7	5	0
VT	414	271	109	33	1
WA	3258	1971	1011	206	70
WI	3751	2914	666	64	107
WV	1466	957	364	96	49
WY	398	291	87	16	4

VFC Provider Enrollment, CDC



Legislative Trends

ASTHO is monitoring several legislative trends:

- Limits to Public Health Authority
 - Impact the health agency's ability to respond during emergencies
 - Shift authority to legislatures for school immunization schedules.
- Scope of Practice Expansion
- Non-Medical Exemption
- Vaccine Mandates and Bans



End of PHE/Commercialization



VACCINE DISTRIBUTION



COVID PANDEMIC TRANSITION
TO COMMERCIALIZATION



IIS IMPACT



ASTHO Public Polling Project

- Health agencies should partner with trusted agencies to engage different segments of the public who have varying levels of trust.
- Create messages to normalize getting updated COVID-19 formulations, in parallel to seasonal flu, to help with concerns about novelty.
- Prioritize messaging that emphasizes the ease and routine of flu vaccines, as convenience is likely to shape demand. Continue to include secondary messages about safety of the flu vaccine and protection for those at high risk of severe illness.
- Share messages about flu vaccine effectiveness for a given year in a clear context so as not to disrupt overall support.



How NAHIS members can support health departments



01

Continued provider
engagement in
vaccination efforts

02

Public health authority
shifts/ limits

Lessons Learned from the Pandemic



PHARMACY PARTICIPATION
DURING COVID



BRIDGE EXTENSION TO
UNINSURED POST-
COMMERCIALIZATION



STATE LEGISLATION TO
PERMANENTLY EXPAND
SCOPE OF PRACTICE FOR
GROUPS OF HEALTHCARE
PROVIDERS



IIS UTILIZATION DURING THE
PANDEMIC



STATE OF PUBLIC HEALTH

Evidenced-Based Approaches States and Territories Can Implement to Advance Adult Immunization Uptake During the COVID-19 Pandemic and Beyond

Ottewell, Ashley MPH, CPH; Martin, Kimberly MAT, BSN, RN; Plescia, Marcus MD, MPH

Journal of Public Health Management and Practice 28(1):p 99-100, January/February 2022. | DOI: 10.1097/PHH.0000000000001473

https://journals.lww.com/jphmp/Fulltext/2022/01000/Evidenced_Based_Approaches_States_and_Territories.16.aspx