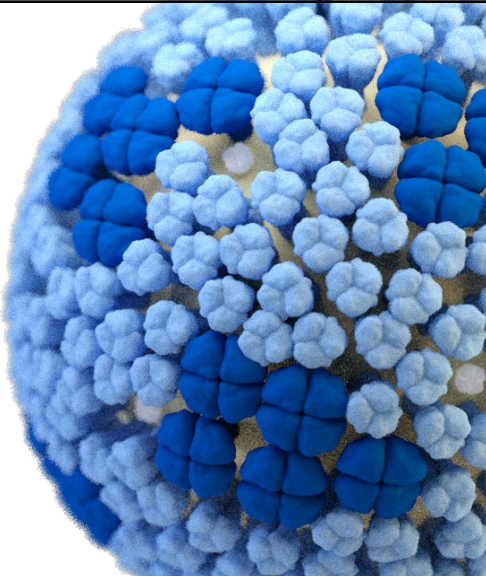



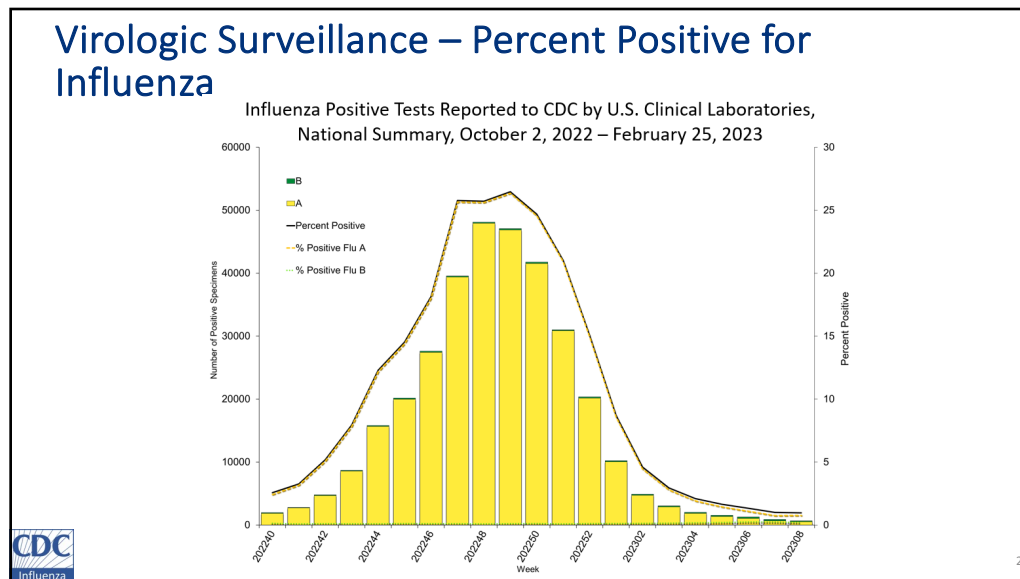
INFLUENZA ACTIVITY UPDATE: 2022-2023 Influenza Season

March 9, 2023

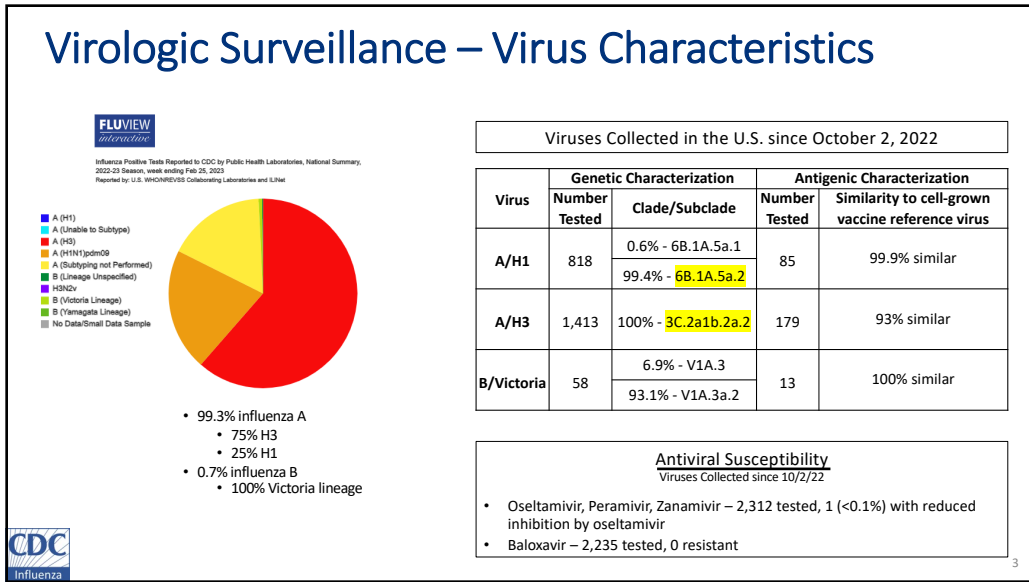
Alicia Budd, MPH
Influenza Division, CDC

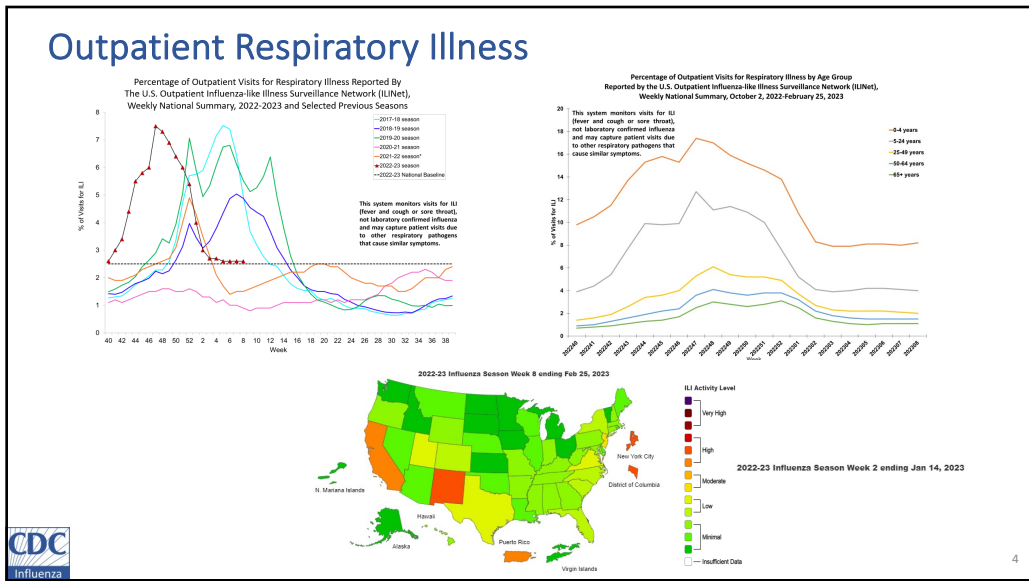
1



2

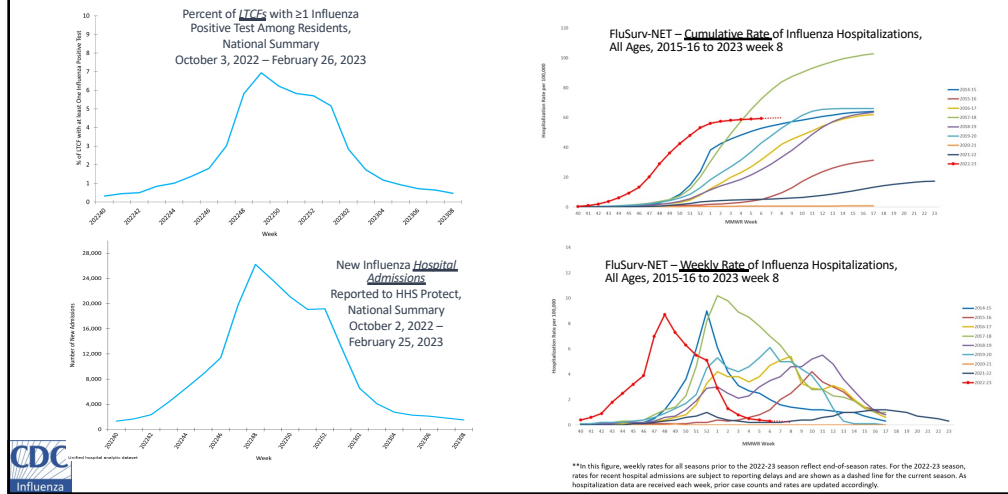


3



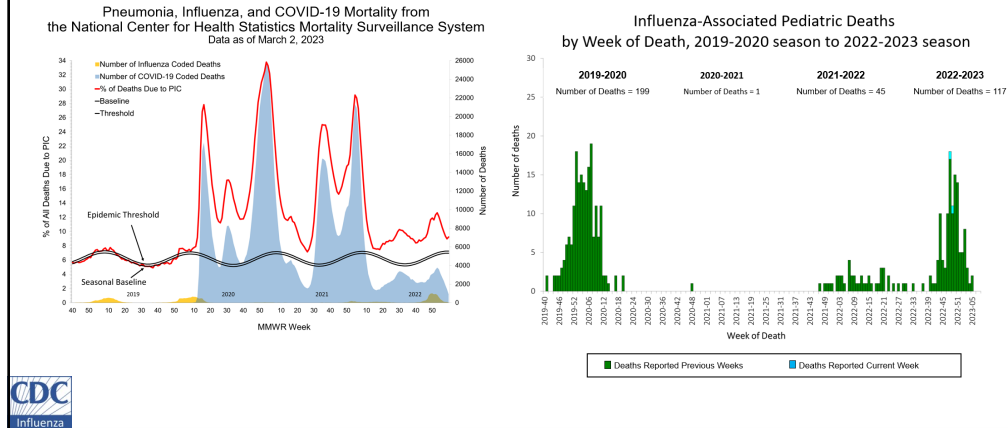
4

Long-term Care Facilities (LTCF) and Hospitals

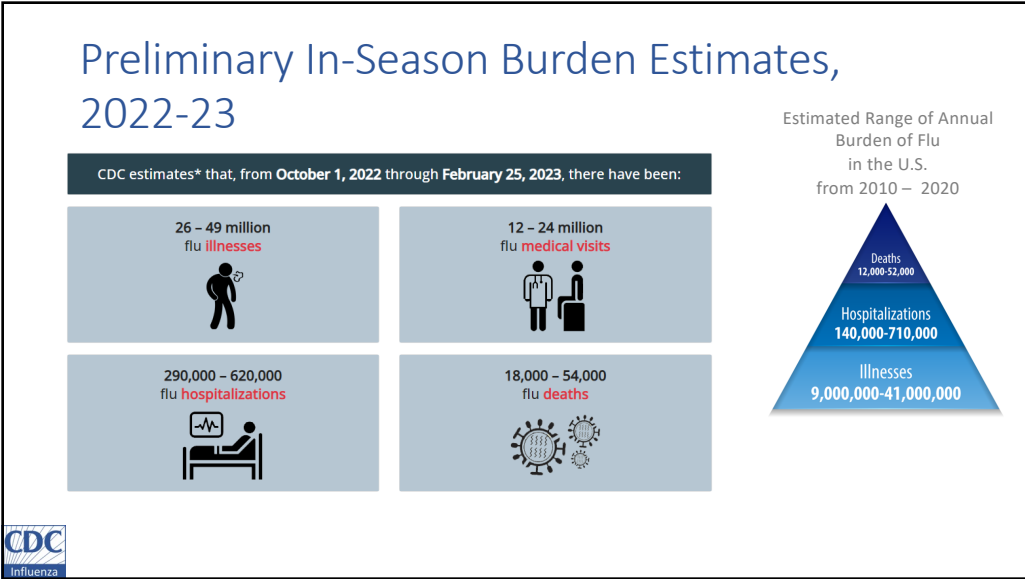


5

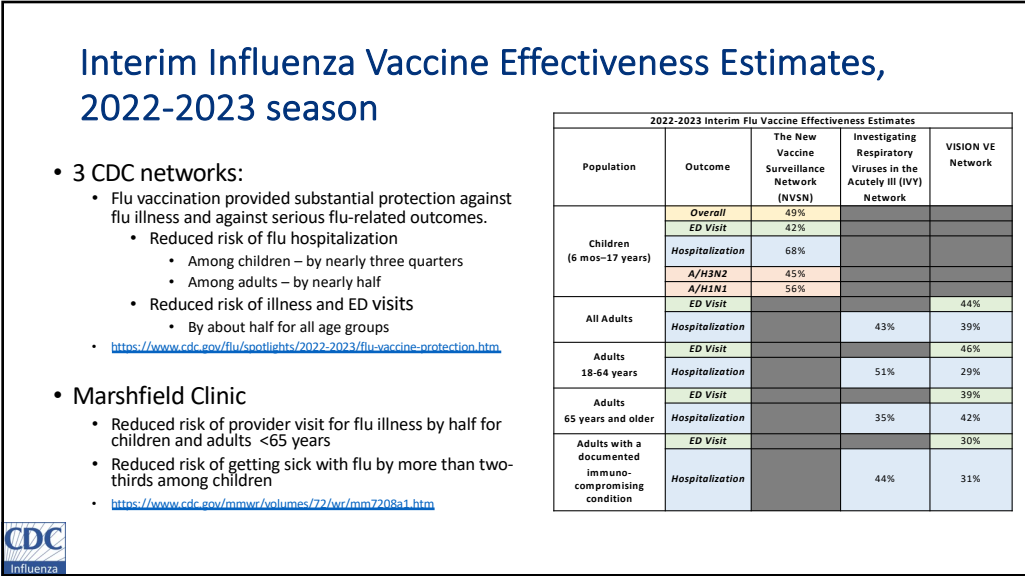
Mortality



6



7



8

2023-2024 Northern Hemisphere Influenza Vaccine Strain Selection Decisions: WHO and VRBPAC

- **A/H1 - *updated***
 - A/Victoria/4897/2022 (H1N1)pdm09-like virus (egg)
 - A/Wisconsin/67/2022 (H1N1)pdm09-like virus (cell/recombinant)
- **A/H3 – no change**
 - A/Darwin/9/2021 (H3N2)-like virus (egg)
 - A/Darwin/6/2021 (H3N2)-like virus (cell/recombinant)
- **B/Victoria – no change**
 - B/Austria/1359417/2021 (B/Victoria lineage)-like virus (egg/cell/recombinant)
- **B/Yamagata – no change**
 - B/Phuket/3073/2013 (B/Yamagata lineage)-like virus (egg/cell/recombinant)



9

Questions?
abudd@cdc.gov

For more information, contact CDC
1-800-CDC-INFO (232-4636)
TTY: 1-888-232-6348 www.cdc.gov

The findings and conclusions in this report are those of the authors and do not necessarily represent the official position of the Centers for Disease Control and Prevention.



10