


Advancing Vaccine Equity & Community Engagement: From Access to Trust

Roberta Kelly, FNP-BC, CIC
Chief Nursing Officer & SVP, Sun River Health

5/28/2026



Sun River Health



Sun River Health

No matter who you are or what you can afford.



Sun River Health

Our story

In the early 1970s, four African American women in Peekskill, New York came together to address the lack of affordable, high-quality health care in their community. With money from a small federal grant, they opened our first site in 1975. Since then, Sun River Health has grown to 50 sites, serving over 250,000 patients annually.



Sun River Health founding mothers & CEO

Overview

Who We Are

Sun River Health is a network of 50 Federally Qualified Health Centers (FQHCs) providing primary, dental, pediatric, OB-GYN, behavioral health care and more to over 250,000 patients annually thru 750,000 visits. With a dedicated staff of nearly 2,000 doctors, nurses, and health care professionals, we are the largest FQHC on the East Coast. We pride ourselves on delivering high-quality, affordable care to those who need it most.

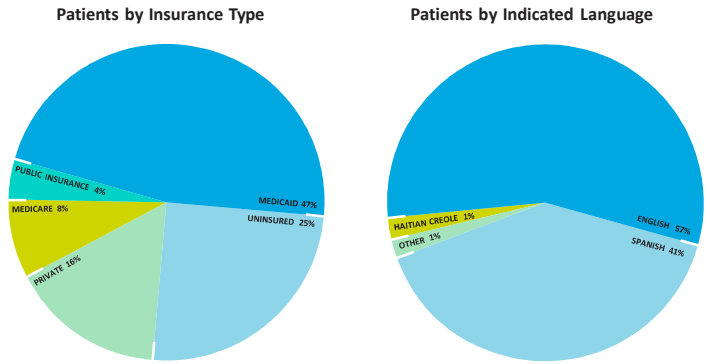
Sun River Health started in 1975 when four African American mothers spearheaded efforts to open our first health center in Peekskill, New York to deliver accessible, high-quality health care regardless of race, religion, income, or insurance status. Today, after more than 45 years of service, Sun River Health is still delivering on that promise to communities across the Hudson Valley, New York City, and Long Island.

Our Mission

To increase access to comprehensive primary and preventive health care and to improve the health status of our communities, especially for the underserved and vulnerable.

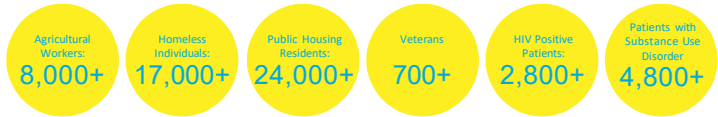
5/28/2026

Who We Serve



Sun River Health serves over 6,800 dually eligible Medicare/Medicaid patients annually

Our special populations include:



5/28/2026

All data according to the Health Resources and Services Administration Uniform Data System

Our services

Complete medical, dental, and mental health care for all ages, no matter income or insurance

- Primary care / family medicine
- Dental care
- Women’s health / OB-GYN
- Behavioral health / integrated specialty
- Pediatrics
- Podiatry
- Family Planning
- Interpretation services
- Benefits counseling
- Care coordination
- Transportation
- Optometry
- Substance use disorder services (including MAT)
- Adult day health care
- HIV care and prevention
- Nutrition counseling
- Health education
- Pain management
- Urgent care
- Mobile health
- Cardiology
- Physical therapy





Welcome to your
 Community Health Center!



- Community Health Centers serve 1 in 10 people in the United States, and 1 in 8 children in the United States

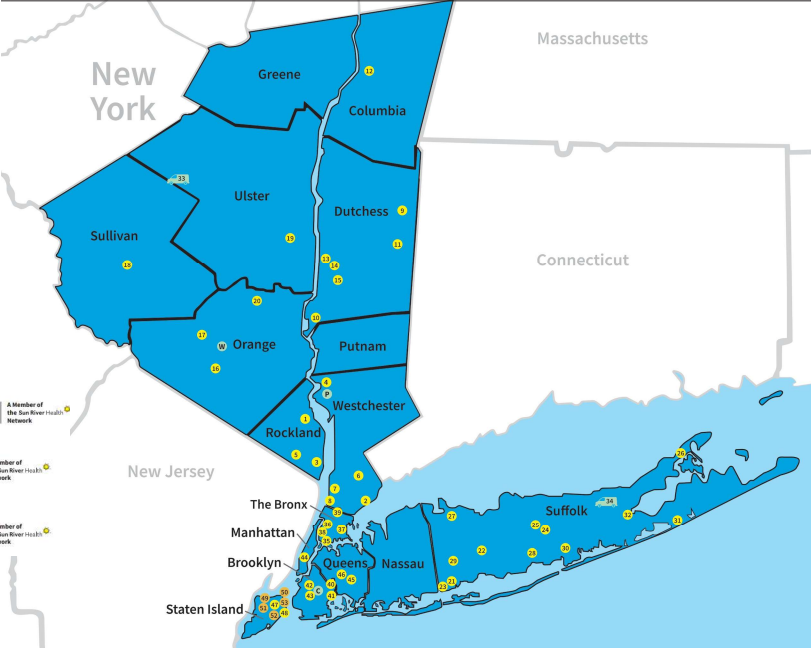


Network Site Map

Our Network*
 250K+ Patients
 2K+ Employees

- Sun River Health
- Community Health Action of Staten Island
- Mobile Health Center

- THE PRESERVATION COMPANY - A Member of the Sun River Health Network
- CWHA - A Member of the Sun River Health Network
- A Member of the Sun River Health Network



5/28/2026 *Including sub-recipients

FQHC's

A critical partner in communities with health disparities

Mobile Capability

Able to mobilize care quickly
Have ability to provide access to care off-site with a variety of services.

Offset Hospital Burden

Open access
Lower cost of care

Uninsured Access to Care & Treatment

Sliding scale programs
Family planning funding
340b pharmacy
Vaccine programs

Community Trust and Advocacy

Long standing relationships in communities with local leaders and patients. Multilingual services and communications. We can reach the patients that need care most.

Partner in Control & Prevention

Primary disease prevention
Education, counseling, testing, access to treatment
Reduce the spread of disease

Stellar Performance

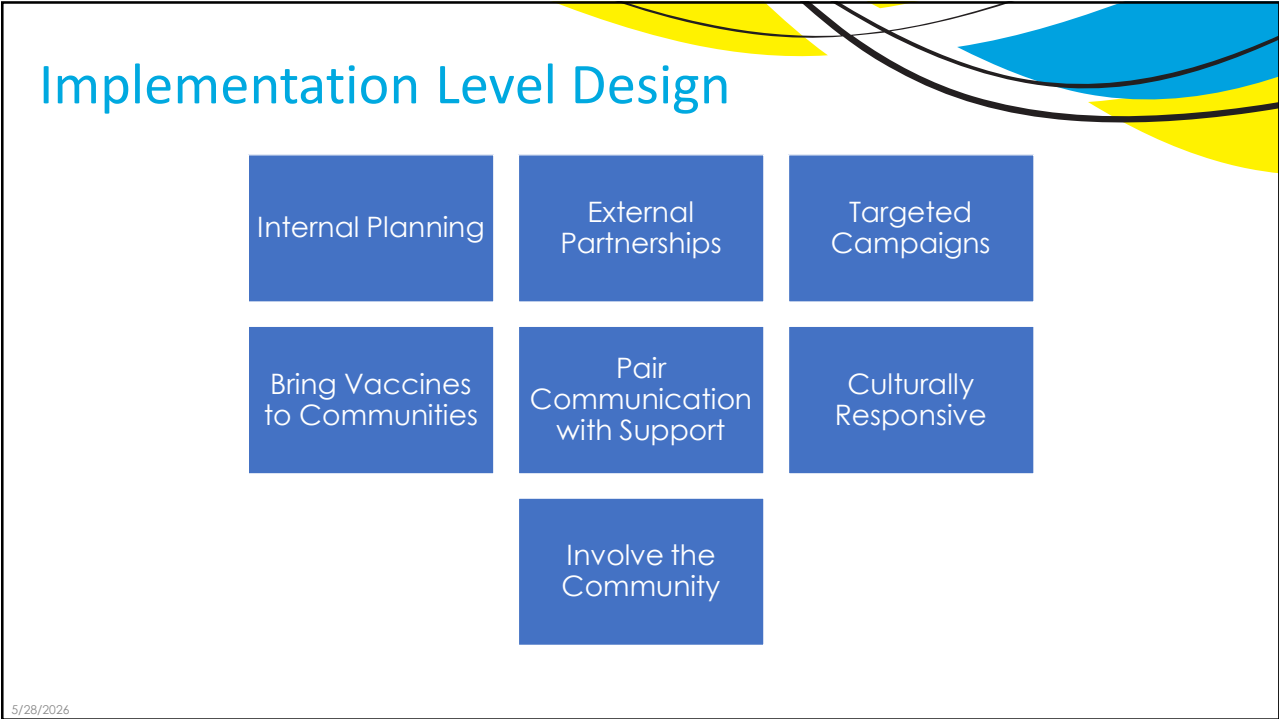
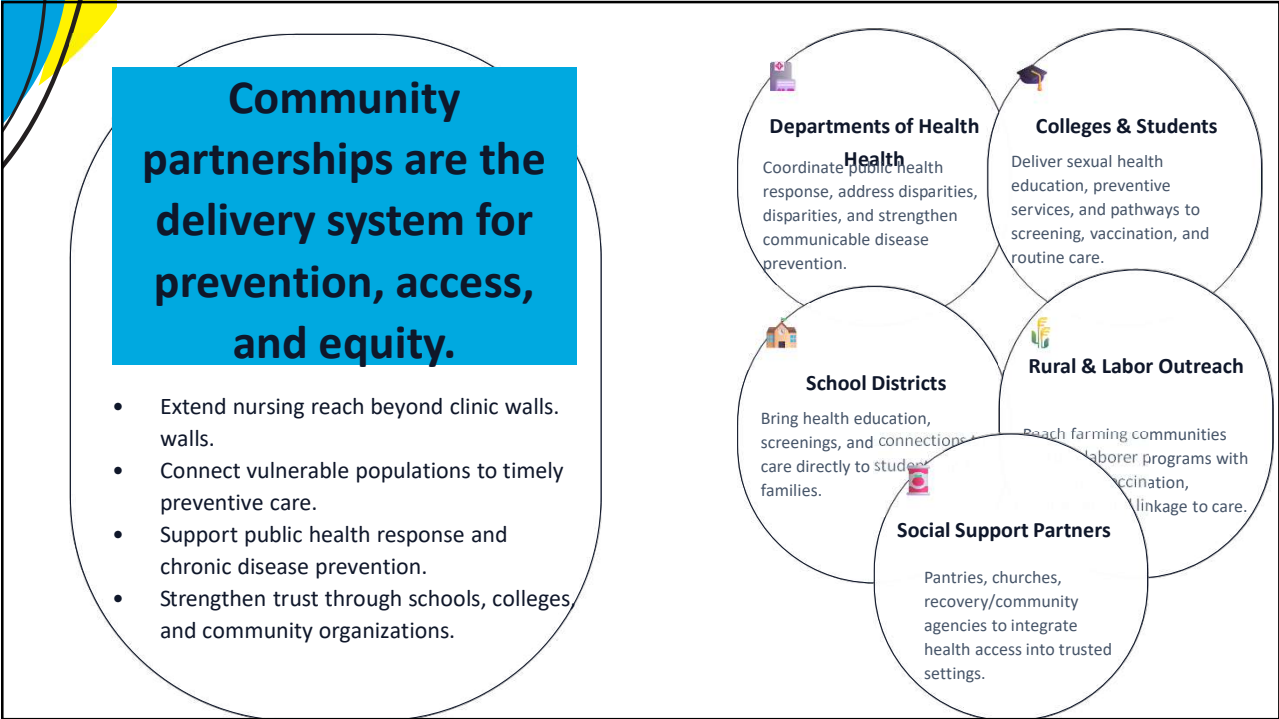
Excellence in the complex healthcare landscape
Proven positive outcomes in PH partnerships

Sun River Health 

Our Experience...

Vaccine equity improves when health systems move from a top-down model to a community-centered model that addresses barriers, builds trust, and shares decision-making

Community engagement is not just outreach; it is an evidence-based strategy.



SRH's Sustainable Model

Focus Area	Details
Public Health Council	Strategies for action, EBP
Community Insights	Patient Advisory Council
Targeted CBO Partnerships	Who supports our patients and has their trust? Who are logical partners?
Performance Monitoring	Tracking outcomes and measuring impact
Health Center Level	Staff Education and Buy-in; Workflow Processes
Communication	Culturally responsive messaging and outreach

5/28/2026

[Social Media: Dr. Williams, MD](#)

Thank you

Sun River Health 

