



What Happened to Influenza? A summary of the 2020-2021 Influenza Season

Maintaining Influenza Prevention During the Ongoing COVID-19 Pandemic
National Adult and Influenza Immunization Summit
May 20, 2021

Alicia Budd, MPH
Influenza Division, NCIRD, CDC

1

Outline

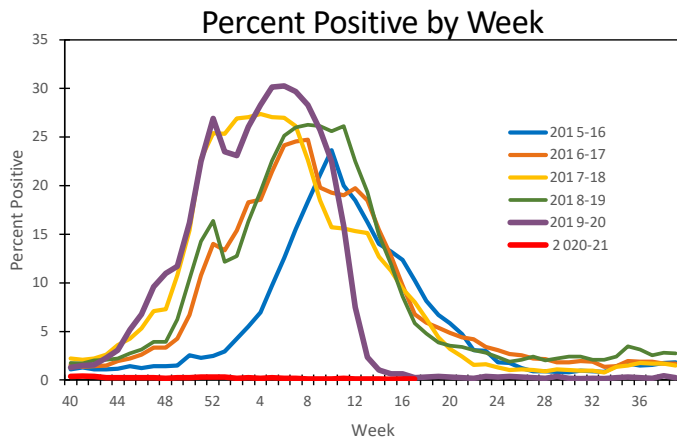
- U.S. influenza surveillance data
- International influenza activity
- Influenza vaccine strain recommendations
- What's next?

2

Influenza Activity in the United States

3

Influenza Tests Reported to CDC by U.S. Clinical Laboratories, National Summary 2015-2016 through 2020-2021*



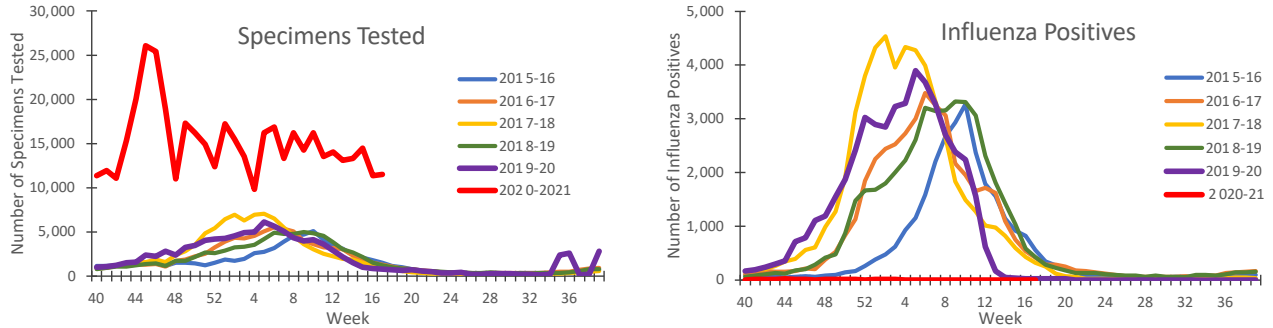
Season Statistics – through week 17

	Specimens Tested	Influenza Positives	Peak % Positive	Total % Positive
2015-16	627,895	65,437	23.6	10.3
2016-17	864,649	127,866	24.7	14.7
2017-18	1,215,229	234,479	27.4	19.2
2018-19	1,098,863	175,782	26.3	16.3
2019-20	1,378,446	250,120	30.3	18.5
Average	1,037,016	170,737	26.5	15.8
Median	1,098,863	175,782	26.3	16.3
2020-21	989,837	1,814	0.4	0.2

* Data through May 1, 2021; reported to CDC as of May 6.

4

Influenza Tests Reported to CDC by U.S. Public Health Laboratories, National Summary, 2015-2016 through 2020-2021 Seasons*

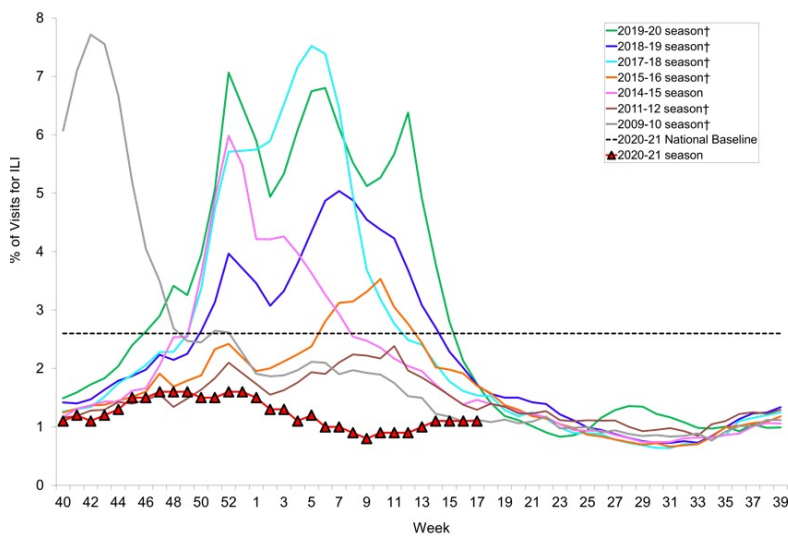


	Specimens Tested through week 17	Influenza Positives through week 17		
		Total	A	B
2015-16	68,081	26,682	19,071	7,611
2016-17	82,957	40,728	32,057	8,671
2017-18	99,525	54,007	38,511	15,496
2018-19	80,353	43,231	41,345	1,886
2019-20	91,993	46,863	27,524	19,339
Average	84,582	42,302	31,702	10,601
Median	82,957	43,231	32,057	8,671
2020-21	463,374	245	150	95

* Data through May 1, 2021; reported to CDC as of May 6.

5

Percentage of Outpatient Visits for Influenza-like Illness U.S. Outpatient Influenza-like Illness Surveillance Network (ILINet) 2020-2021* and Selected Previous Influenza Seasons

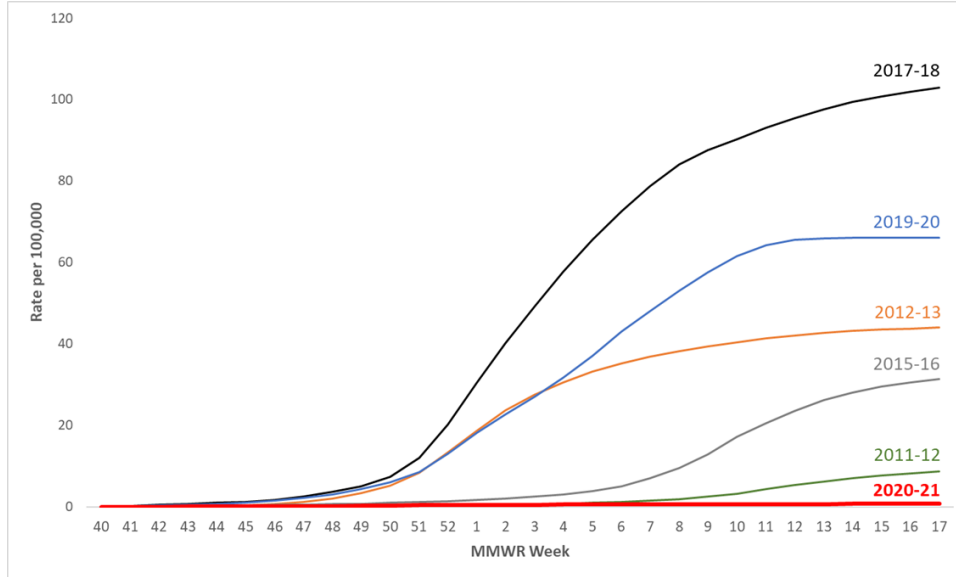


* Data through May 1, 2021; reported to CDC as of May 6.

†These seasons did not have a week 53, so the week 53 value is an average of week 52 and week 1.

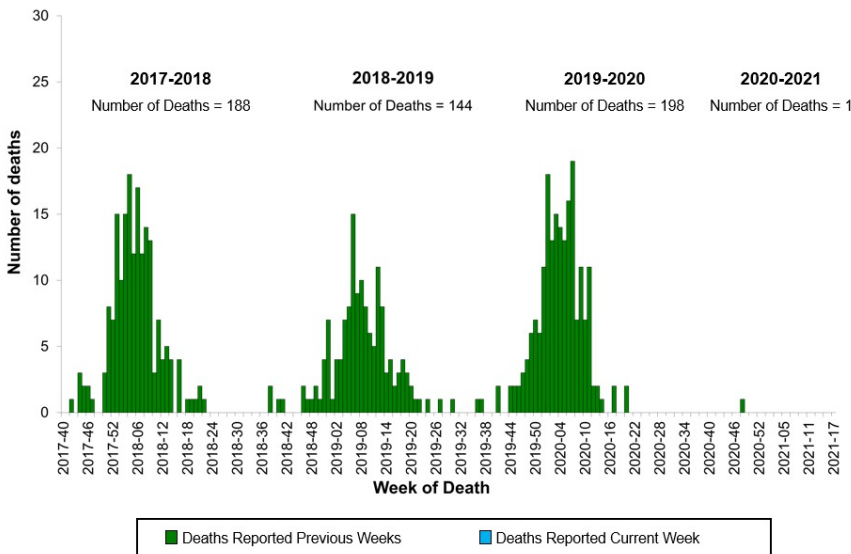
6

FluSurv-NET: Influenza-Associated Hospitalizations, Cumulative Rate 2020-2021 and Selected Previous Seasons



7

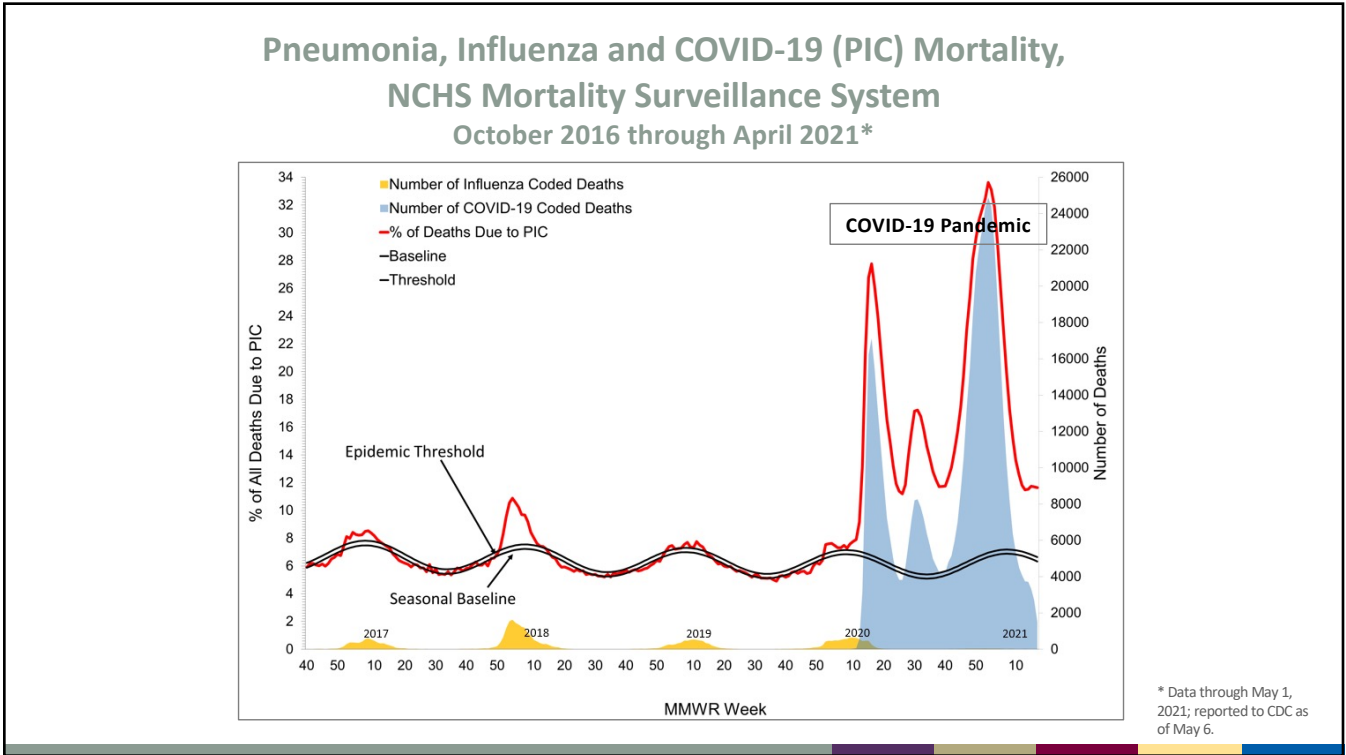
Influenza-Associated Pediatric Deaths by Week of Death 2017-2018 through 2020-2021* Seasons



	Number of Pediatric Deaths Reported
2004-05	47
2005-06	46
2006-07	77
2007-08	88
2008-09	137
2009-10	288
2010-11	124
2011-12	171
2012-13	111
2013-14	148
2014-15	95
2015-16	110
2016-17	188
2017-18	144
2018-19	198
2019-20	1
2020-21	1

* Data through May 1, 2021; reported to CDC as of May 6.

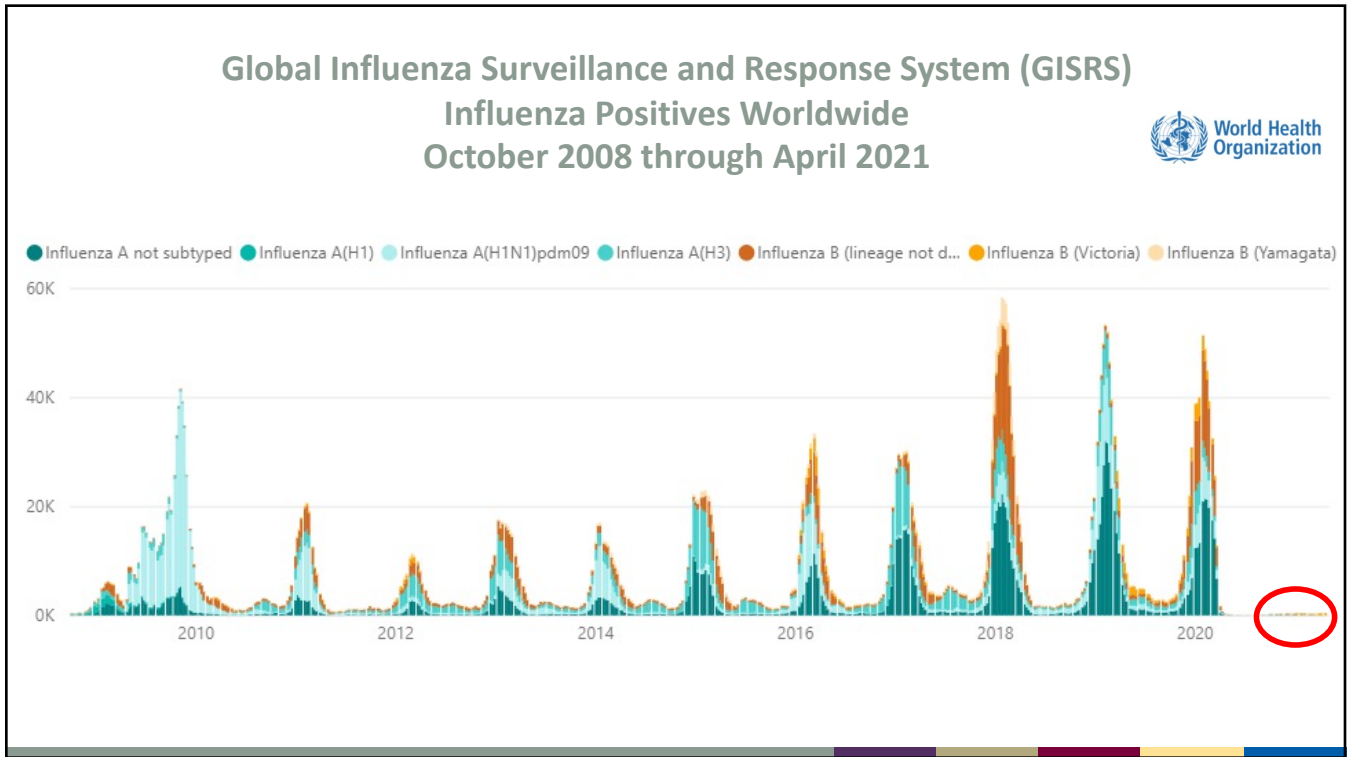
8



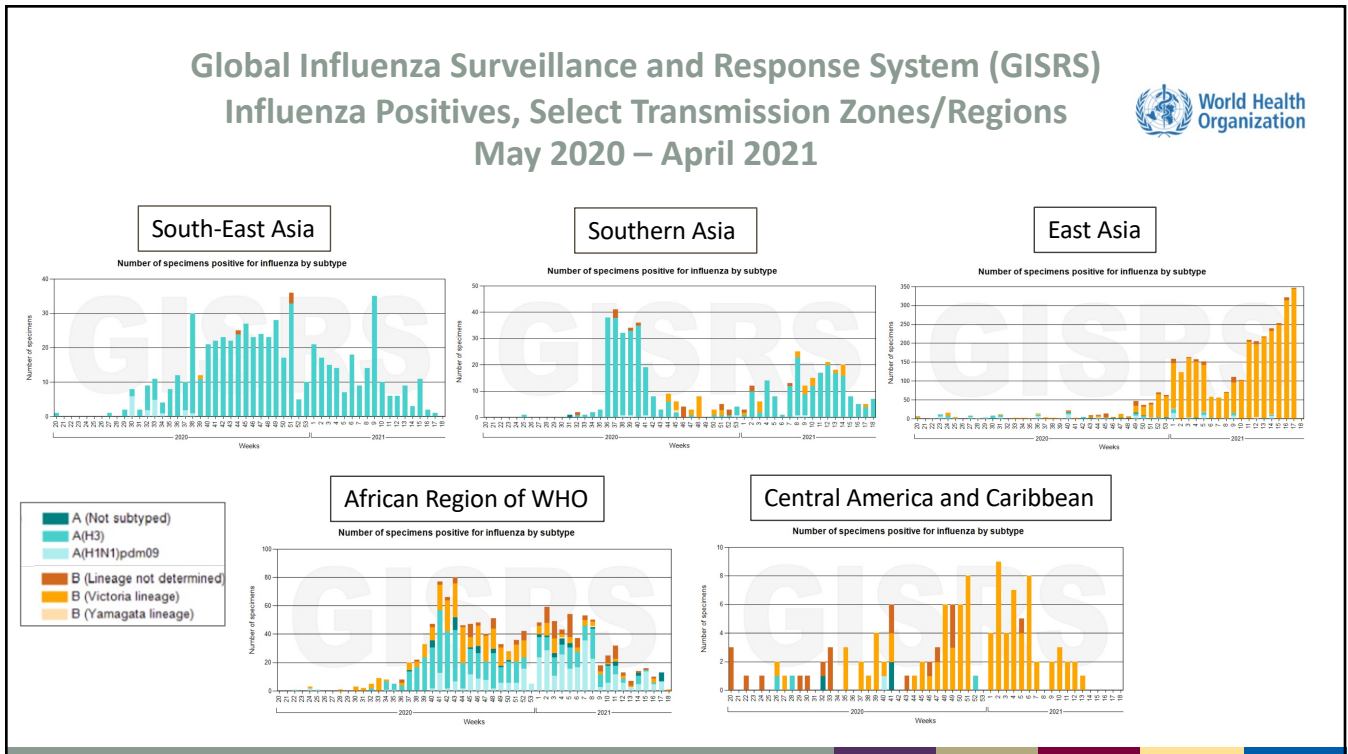
9

International Influenza Activity

10



11



12

Influenza Vaccine Strains

13

Vaccine Viruses: 2021-22 Northern Hemisphere Season

- **A/H1pdm09** - *Updated*
 - A/Victoria/2570/2019 (H1N1)pdm09-like virus (egg)
 - A/Wisconsin/588/2019 (H1N1)pdm09-like virus (cell or recombinant)
- **A/H3N2** – *Updated*
 - A/Cambodia/e0826360/2020 (H3N2)-like virus (egg, cell or recombinant)
- **B/Victoria** – No change
 - B/Washington/02/2019 (B/Victoria lineage)-like virus (egg, cell or recombinant)
- **B/Yamagata** – No change
 - B/Phuket/3073/2013 (B/Yamagata lineage)-like virus (egg, cell or recombinant)

14

Summary

15

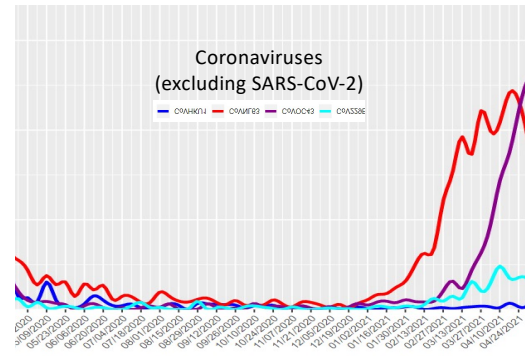
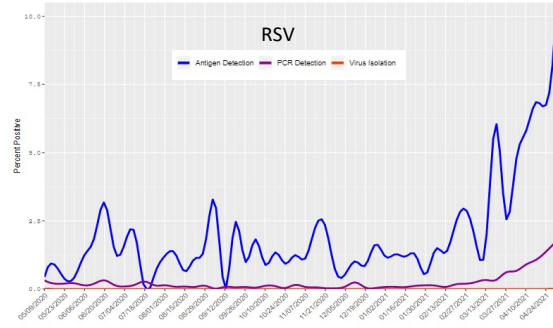
What Happened to Influenza?

- Influenza activity was at an unusually low level both in the U.S. and worldwide
- COVID-19 mitigation measures likely played a significant roll
 - Social distancing, mask wearing, hand washing
 - Remote learning and telework
 - Decreased travel domestically and internationally
 - Staying home while ill
- Influenza vaccination also provided another layer of protection

16

What's Next?

- Influenza is unpredictable.
- Other respiratory viruses are slowly beginning to increase. Will flu follow?
- What happens in the fall when schools reopen?



17

Thank you!

Any questions?

Alicia Budd
ABudd@cdc.gov

For more information, contact CDC
1-800-CDC-INFO (232-4636)
TTY: 1-888-232-6348 www.cdc.gov

The findings and conclusions in this report are those of the authors and do not necessarily represent the official position of the Centers for Disease Control and Prevention.



18