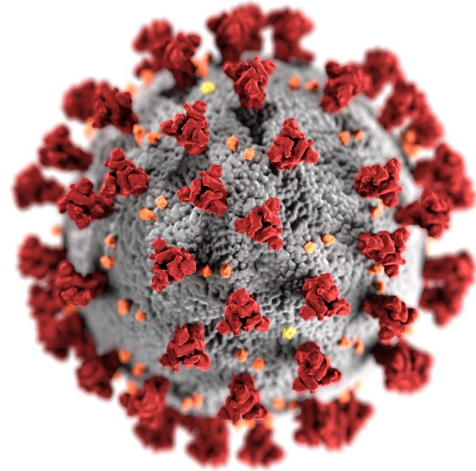


Long-Term Care COVID-19 Vaccine Access

Amy Parker Fiebelkorn, MSN, MPH
Lead, Long-Term Care Team
Vaccine Task Force, CDC

September 30, 2021



cdc.gov/coronavirus

FOR OFFICIAL USE ONLY - DO NOT DISTRIBUTE

1

DRAFT – PRE-DECISIONAL & DELIBERATIVE

COVID-19 Vaccine Access for Long-Term Care

Goal:

Continue to protect those who are disproportionately affected by COVID-19—especially residents of Long-Term Care settings (e.g., nursing homes, assisted living, residential care communities, group homes, and senior housing).

All LTC settings that request assistance accessing COVID-19 vaccines for their residents and staff will receive the support they need.



FOR OFFICIAL USE ONLY - DO NOT DISTRIBUTE

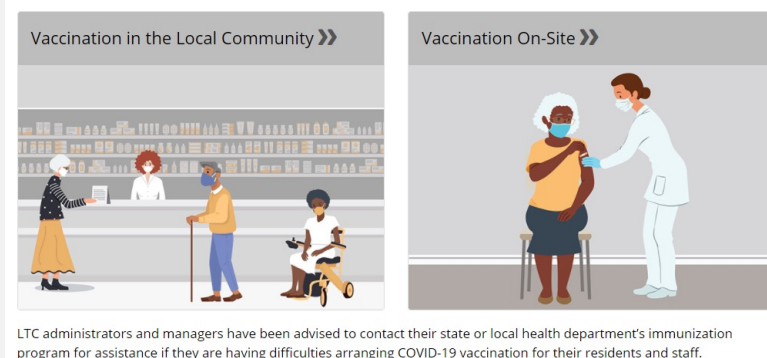
2

2

COVID-19 Vaccine Access for Long-Term Care

This approach provides maximum flexibility for different long-term care settings depending on their specific staff/residents' needs:

- Existing local pharmacy provider, retail pharmacy clinics OR On-site clinics



3

Why is this approach different from the Winter 2020-21 Rollout?

- Why take a different approach?
 - Supply for vaccine is not constrained like it was in winter 2020- 21
 - Many facilities already have strategies and partnerships in place to access COVID-19 vaccine
 - Expanded pharmacy partners to do onsite vaccination clinics
 - Convenient access to vaccine in communities, including +40K pharmacy locations
- Program is designed to ensure that the needs for different types of LTC settings are met. Needs will vary based on size, ability of the population to leave a facility, geographic locations (rural, urban), etc.



4

DRAFT – PRE-DECISIONAL & DELIBERATIVE

<https://www.cdc.gov/vaccines/covid-19/long-term-care/pharmacy-partnerships.html>

The screenshot shows a CDC webpage with the following content:

- Navigation:** Home, COVID-19 Vaccination, Planning & Partnerships.
- Left Sidebar:** COVID-19 Vaccination, Product Info by U.S. Vaccine, Clinical Care, Provider Requirements and Support, Training and Education, Vaccine Recipient Education, Health Departments, Planning & Partnerships (expanded), COVID-19 Vaccination Program Operational Guidance, Vaccine Allocation Transfer and Redistribution Guidance for IHS and Tribal Facilities, Considerations for Planning School-Located Vaccination Clinics, Federal Retail Pharmacy Program, COVID-19 Vaccine Access in Long-term Care Settings (selected), Information for Long-term Care Administrators & Managers.
- Main Content:**
 - Notice: "The U.S. Food & Drug Administration has not yet authorized COVID-19 vaccine booster doses, and CDC's Advisory Committee on Immunization Practices (ACIP) has not yet made a recommendation on booster doses for people living and working in LTC settings. CDC will update this webpage when new information is available."
 - Section: "COVID-19 Vaccine Access in Long-term Care Settings"
 - Illustration: Healthcare workers and residents in a long-term care setting.
 - Text: "The federal government is committed to ensuring that residents and staff in long-term care (LTC) settings, such as nursing homes, assisted living, residential care communities, group homes and senior housing have access to COVID-19 vaccines to receive primary series and booster doses (if approved by the US Food and Drug Administration (FDA) and recommended by CDC's Advisory Committee on Immunization Practices (ACIP))."
 - Text: "The goal is to continue to protect those who are disproportionately affected by COVID-19—especially residents of LTC settings. All LTC settings that request assistance in accessing COVID-19 vaccines for their residents and staff will receive the support they need."
 - Text: "Many LTC providers have already identified strategies and partnerships to obtain and administer COVID-19 vaccines for residents and staff. These include:"
 - Working with established LTC partners and retail pharmacy partners
 - Coordinating with state and local health departments
 - Text: "Lone-term care providers are encouraged to consider the option that works best for their residents and staff when"
- Right Sidebar:** "Information About COVID-19 Vaccines for LTC Residents and Family Members"

5

DRAFT – PRE-DECISIONAL & DELIBERATIVE

CDC Actions

- Outreach to Jurisdictions
 - Calls/listening **readiness sessions** with HHS regions; **follow-up ongoing** with some states to prepare them to be first-line safety net support for LTC settings
 - Jurisdictional Checklist/readiness survey on booster vaccine access planning
 - Skilled Nursing Facility verification survey and NHSN¹ weekly monitoring
- Outreach to Pharmacy partners
 - Weekly calls with **all 21 pharmacy partners** to ensure readiness to provide clinics (and prioritization of LTC settings)
- Outreach to LTC settings/LTC partners/Federal partners
 - **Email blast** to all 37,000 LTC settings from primary series Federal Retail Pharmacy Partnership that included a survey to indicate a need for additional assistance.
 - Regular calls with LTC partners (AHCA, Leading Age) and Federal Partners (ACL, CMS, etc.)
- Additional CDC support
 - Developed a website: <https://www.cdc.gov/vaccines/covid-19/long-term-care/pharmacy-partnerships.html>
 - CDC will connect LTC settings with pharmacy partners as an additional safety net support

¹ National Healthcare Safety Network

6

LTC Providers Actions

- **Vaccination in the Local Community:**

- Let residents and staff know that they can receive a COVID-19 vaccine at an existing vaccine site (e.g., a nearby pharmacy or healthcare provider's office)
- For residents and staff who are willing and able to travel to a vaccine site, this may be the fastest way to get vaccinated

- **Vaccination onsite in LTC setting**

- May be the best option to meet LTC resident needs
- LTC providers should contact long-term care pharmacy, local retail pharmacy, or other vaccine provider to arrange for an on-site vaccination clinic

If LTCs are having difficulties contact state or local health department's immunization program your first-line of safety net support

CDC support is available as the **safety net through CDC-INFO helpline**



7

Jurisdiction Actions

State and local jurisdictions play a critical role as the first-level safety net support in ensuring LTC settings have the vaccine access and support they need.

- States should be actively developing a robust booster rollout plan, communicating with the LTC settings they worked with for primary series vaccination, in addition to new sites to identify potential areas/sites requiring additional assistance
- If jurisdiction is contacted by a LTC provider, review the Options for Coordinating Access to COVID-19 Vaccines with them, on CDC website
- State or jurisdictions can use the Tiberius application to submit requests to CDC for assistance. More information on this process will be shared as soon as it's available
- CDC support is available if the immunization program is unable to connect LTC setting with vaccine provider



8

DRAFT – PRE-DECISIONAL & DELIBERATIVE

LTC COVID-19 Vaccination Data Reporting

- Pharmacy partners will continue to submit patient vaccination data to jurisdiction immunization information systems (IIS) and directly to CDC
 - Includes data for adults aged over 65 years
- Pharmacy partners will also collect facility level data for onsite clinics (weekly)
 - Elements reported: facility name, city, state, # doses administered and date of clinic
 - Will only include data from when pharmacies go to a facility to administer doses
 - Data will be shared with CDC
 - Jurisdictions will have access to this data in Tiberius
- SNFs report estimates of vaccine coverage of residents and staff available in NHSN¹
 - NHSN adding data elements on booster/additional doses
 - Weekly reports are sent to jurisdictions
- Jurisdictions will have visibility on the progress of LTC requests sent to CDC as part of USG “Safety Net”

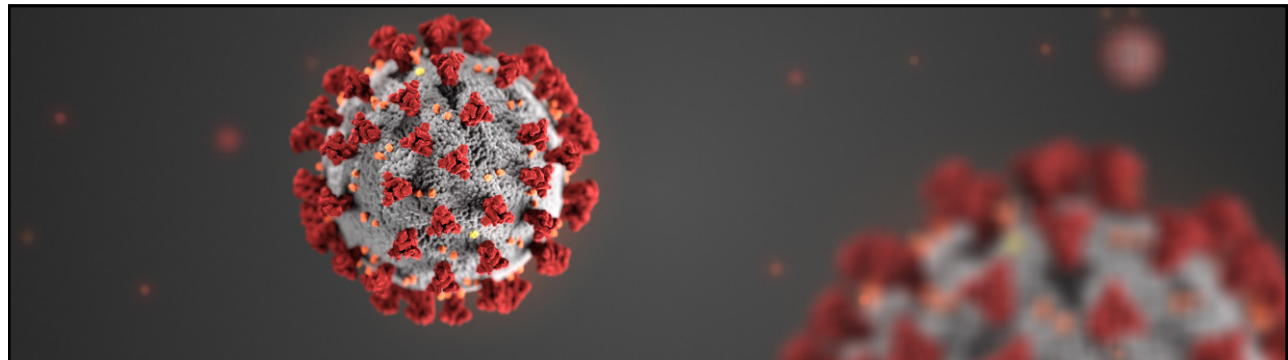


¹ National Healthcare Safety Network

9

FOR OFFICIAL USE ONLY - DO NOT DISTRIBUTE

9



For more information, contact CDC
1-800-CDC-INFO (232-4636)
TTY: 1-888-232-6348 www.cdc.gov

CDC LTC Team, VTF
eocevent494@cdc.gov

The findings and conclusions in this report are those of the authors and do not necessarily represent the official position of the Centers for Disease Control and Prevention.



10