

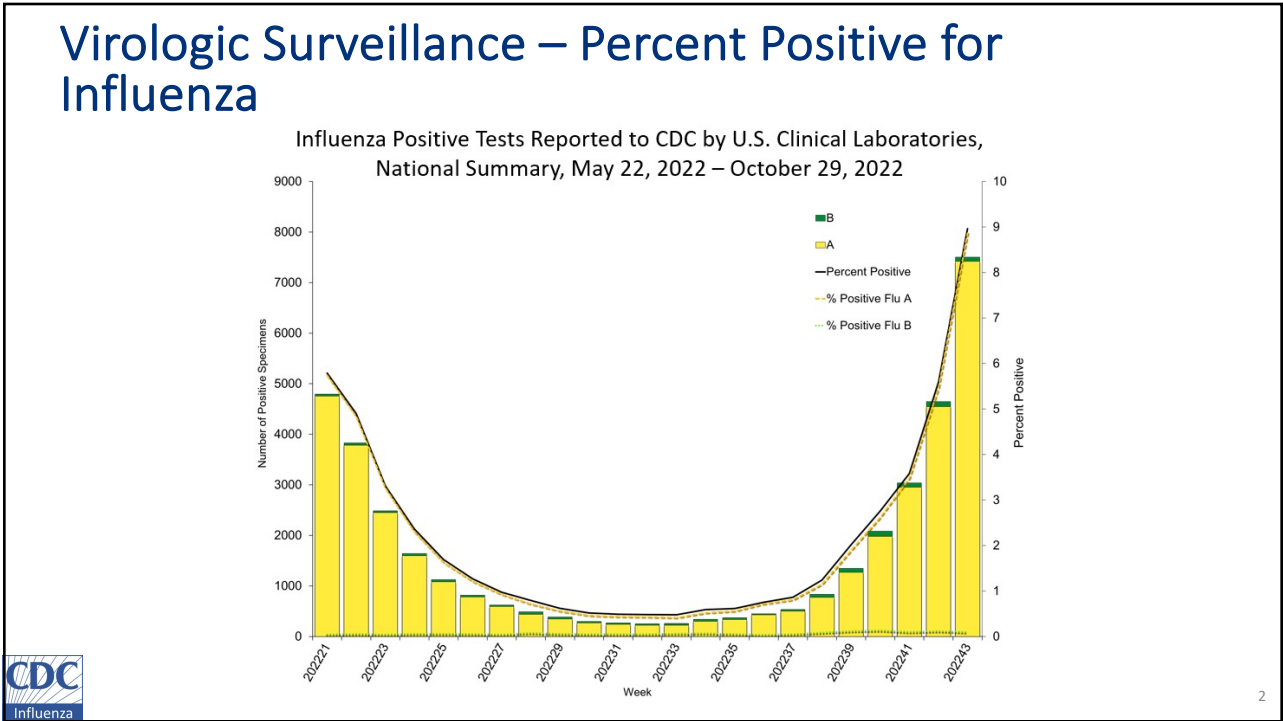
INFLUENZA ACTIVITY UPDATE: 2022-2023 Influenza Season

November 10, 2022

Alicia Budd, MPH
Influenza Division, CDC



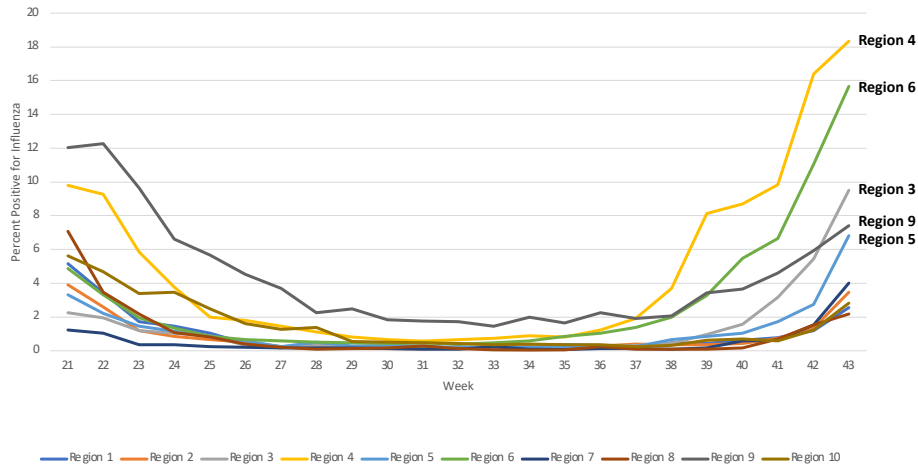
1



2

Virologic Surveillance – Percent Positive for Influenza

Percent Positive for Influenza, by HHS Region
Clinical Laboratories Reporting to CDC
May 22, 2022 - October 29, 2022



3

3

Virologic Surveillance – Virus Characteristics

Influenza Positives Reported to CDC by Public Health Laboratories,
National Summary
October 2, 2022 - October 29, 2022



- 99% influenza A
 - 79% H3
 - 21% H1
- 1% influenza B
 - 100% Victoria lineage



4

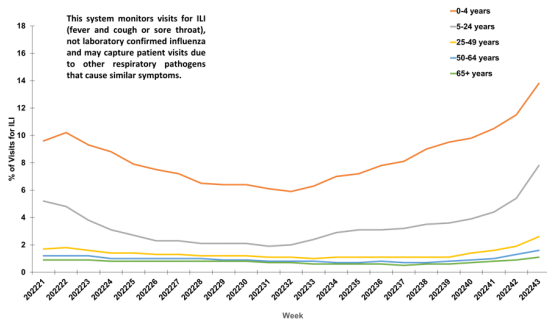
4

Viruses Collected in the U.S. since May 1, 2022

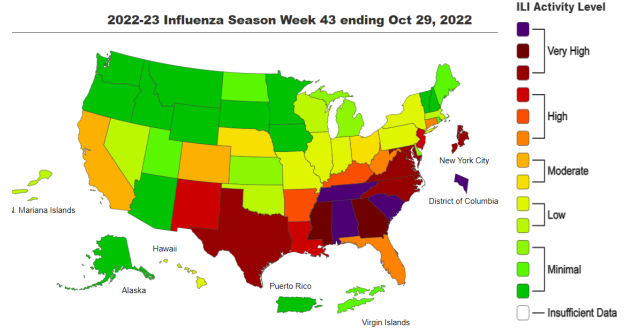
Virus	Genetic Characterization		Antigenic Characterization	
	Number Tested	Clade/Subclade	Number Tested	Similarity to vaccine reference virus
A/H1	40	13% - 6B.1A.5a.1	26	92% similar to cell-grown
		88% - 6B.1A.5a.2		92% similar to egg-grown
A/H3	418	100% - 3C.2a1b.2a.2	42	100% similar to cell-grown 95% similar to egg-grown
B/Victoria	2	100% - V1A.3	1	100% similar to cell-grown 100% similar to egg-grown

Outpatient Respiratory Illness

Percentage of Outpatient Visits for Respiratory Illness by Age Group
Reported by the U.S. Outpatient Influenza-like Illness Surveillance Network (ILINet),
Weekly National Summary, May 22, 2022-October 29, 2022*



2022-23 Influenza Season Week 43 ending Oct 29, 2022

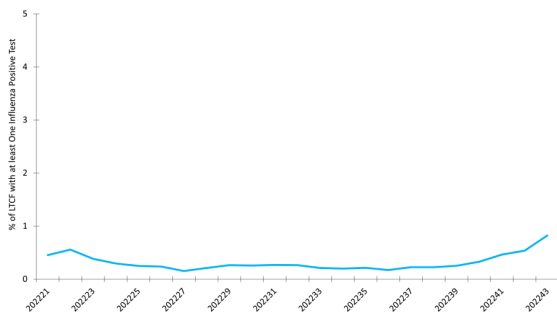


- Highest levels match with areas reporting increased flu activity
- Also being driven by
 - RSV
 - Rhinovirus/Enterovirus
 - Sars-CoV-2

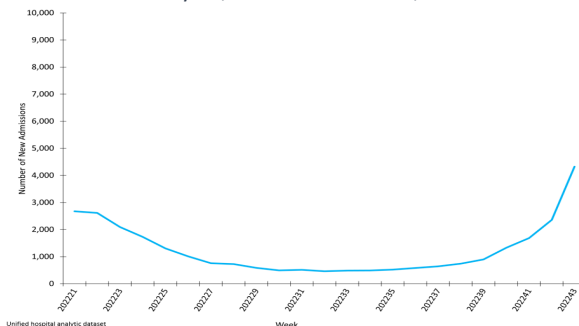


Long-term Care Facilities (LTCF) and Hospitals

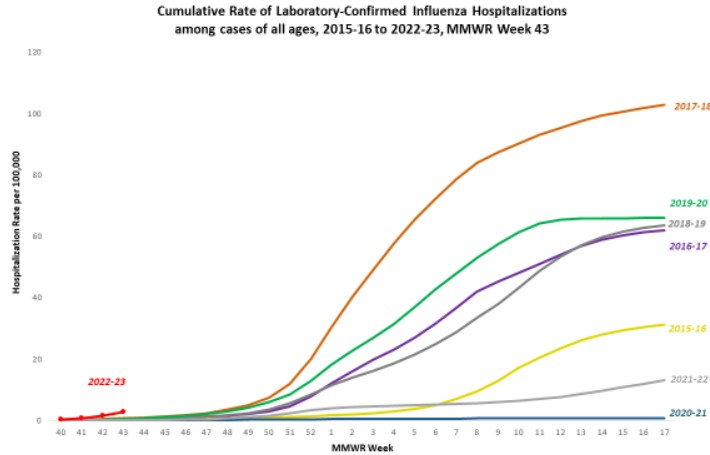
Percent of *LTCFs* with ≥ 1 Influenza Positive Test
Among Residents, National Summary
May 23, 2022 – October 30, 2022



New Influenza *Hospital Admissions*
Reported to HHS Protect, National Summary
May 22, 2022 – October 29, 2022



FluSurv-NET – Hospitalization Rates



Week 43 Rate per 100,000

- Prior 10 years, overall: 0 – 0.5
- 2022, overall: 2.9

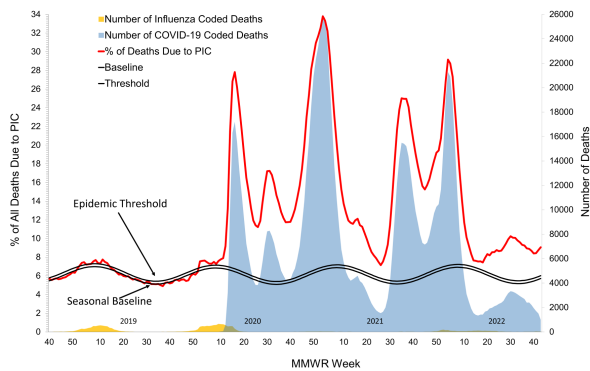
Age Group	2022 Rate	Prior 10 yr. Rate
0-4 years	5.5	0 – 0.9
5-17 years	2.6	0 – 0.3
18-49 years	1.5	0 – 0.2
50-64 years	2.8	0 – 0.5
65+ years	6.3	0.1 – 1.4

**In this figure, cumulative rates for all seasons prior to the 2022-23 season reflect end-of-season rates. For the 2022-23 season, rates for recent hospital admissions are subject to reporting delays. As hospitalization data are received each week, prior case counts and rates are updated accordingly.

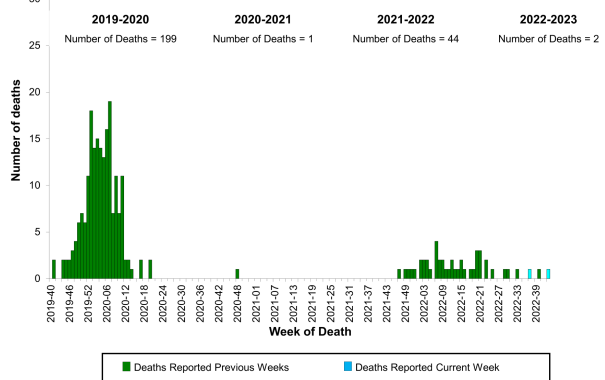


Mortality

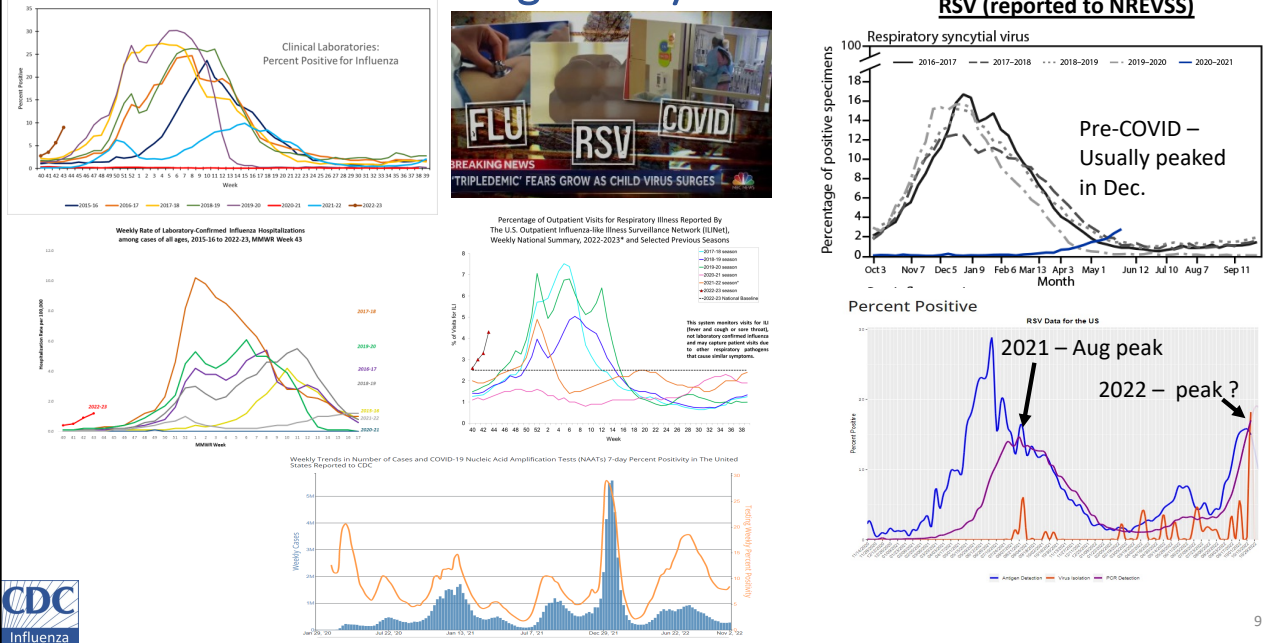
Pneumonia, Influenza, and COVID-19 Mortality from the National Center for Health Statistics Mortality Surveillance System
Data as of November 3, 2022



Influenza-Associated Pediatric Deaths by Week of Death, 2019-2020 season to 2022-2023 season



Influenza Activity Timing – early and not alone



9

Summary

- Influenza activity is increasing earlier than “usual.”
 - Highest in the southeast and south-central regions, followed by Mid-Atlantic and south-central West Coast
 - Mostly A/H3, some A/H1 and a few Bs
- It’s too early to know how severe the season will be.
- In the U.S. so far this season:
 - At least 1.6 million symptomatic illnesses
 - At least 760,000 medical visits
 - At least 13,000 hospitalizations
 - At least 730 deaths
- It’s a great time to get vaccinated!



10

Questions?
abudd@cdc.gov

For more information, contact CDC
1-800-CDC-INFO (232-4636)
TTY: 1-888-232-6348 www.cdc.gov

The findings and conclusions in this report are those of the authors and do not necessarily represent the official position of the Centers for Disease Control and Prevention.

