



Texas Department of State  
Health Services

# Adult Prevention and Public Health Fund Pharmacies

**Texas Department of State  
Health Services  
Immunization Unit**

## Texas – The Lone Star State

- 261,232 square miles
- Total population: 28,304,596
- Total adult population (18-64 yrs): 16,560,325
- More than 7,460 pharmacies in Texas



Texas Department of State  
Health Services



\*Source: 2015 Small Area Health Insurance Estimates Program, US Census Bureau

## Texas Pharmacy Partnerships

### Prior to Adult Prevention and Public Health Fund (PPHF)

- ImmTrac2 use:
  - Large chain pharmacies headquarters submit data on behalf of sub-sites
  - Few independent pharmacies
- Barriers
  - Consent process
  - Low pharmacist and staff knowledge of the registry
- DSHS interaction: Low



## Establishing New Pharmacy Partnerships

### Texas Pharmacy Association (TPA)

- Partnership opportunities
  - Newsletter articles
  - Conference presentations and booths
  - Shared information and resources about ImmTrac2
- 2018 Texas Pharmacy Association Conference
  - Presentation
  - Exhibition Hall Booth
    - Immunization Resources
    - ImmTrac2 Resources



## Establishing New Pharmacy Partnerships

### Large Chain Pharmacies

(Walgreens, HEB)

- Pharmacy site visit participation
- Barriers:
  - Approval process long for site visit
  - Adoption of consent process strict
  - Already developed materials

### Independent Pharmacies

- Pharmacy site visit participation
- More flexibility with adoption of registry consent process.



## Pharmacy Site Visits

### Goal of Adult PPHF

To remove barriers to vaccines and improve vaccination coverage rates for adults in Texas.

### CDC Standards for Adult Immunization Practice

1. Assess immunization status for all patients at every encounter.
2. Strongly recommend vaccines patients need.
3. Administer needed vaccines or refer patients to a provider who vaccinates.
4. Document vaccinations that patients receive.

<https://www.cdc.gov/vaccines/hcp/adults/for-practice/standards/index.html>





## Pharmacy Site Visits

**Target populations**

- Pharmacies
  - Large Chain
  - Independent

**Objectives**

- Offer education to clinic staff
- Encourage reporting the number of vaccine doses administered to adults to ImmTrac2 (Texas immunization registry)
- Increase adult immunization coverage rates
- Increase partnerships



## Adult PPHF Pharmacy Site Visits

**2017 Initial Pharmacy Site Visit**

**Pharmacy site visit:**

- Standards for Adult Immunization Practice
- Storage and handling
- Provide immunization educational resources and encourage immunizations trainings
- Reviewer: Adult and Adolescent Immunization Coordinators (AAIC)

# Adult Immunization Program Quality Assurance

## 2018 Pharmacy Site Visits

- CDC Standards for Adult Immunization Practice
- Provide immunization educational resources
- Reviewer: DSHS Contractor



## 2018 Adult Site Visit Reviewer Tool

### WELCOME

Welcome to the 2018 Adult Site Visit Reviewer Tool!

This reviewer tool is divided in two sections:

1. Standards for Adult Immunization Practice
2. Compliance Site Visit Questionnaire

*Section 1 assesses the implementation of immunization standards. All adult providers will be evaluated on questions found in Section 1.*

*Section 2 assesses the implementation of best practices for storage & handling of vaccine and other ASN Program requirements. For non-ASN providers, they will only be evaluated on storage & handling practices.*

# Adult Immunization Program Activity (Adult PPHF)

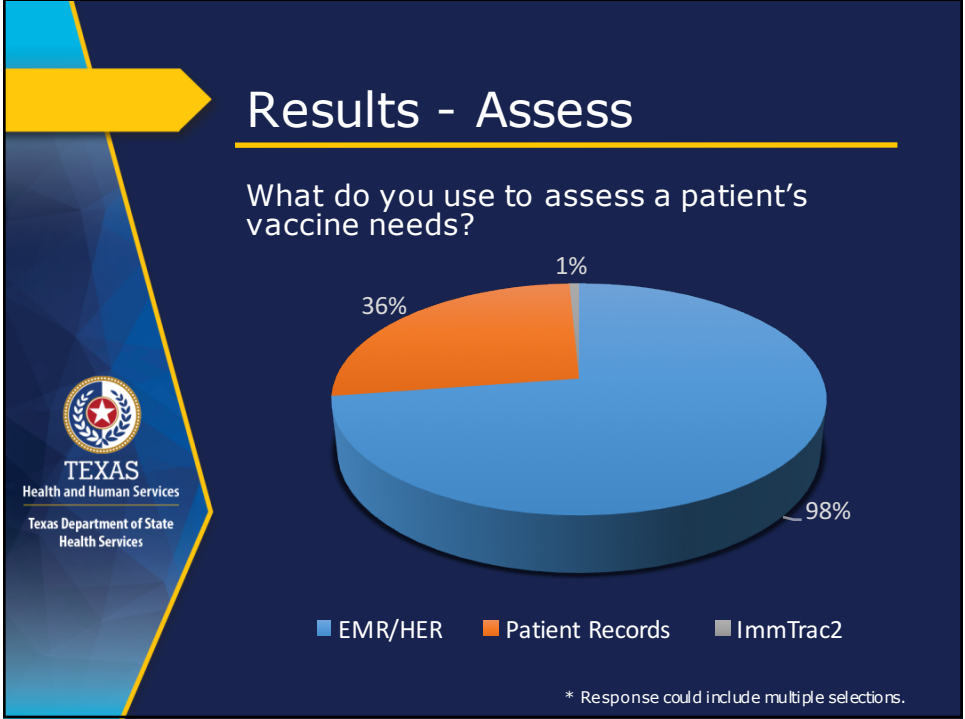
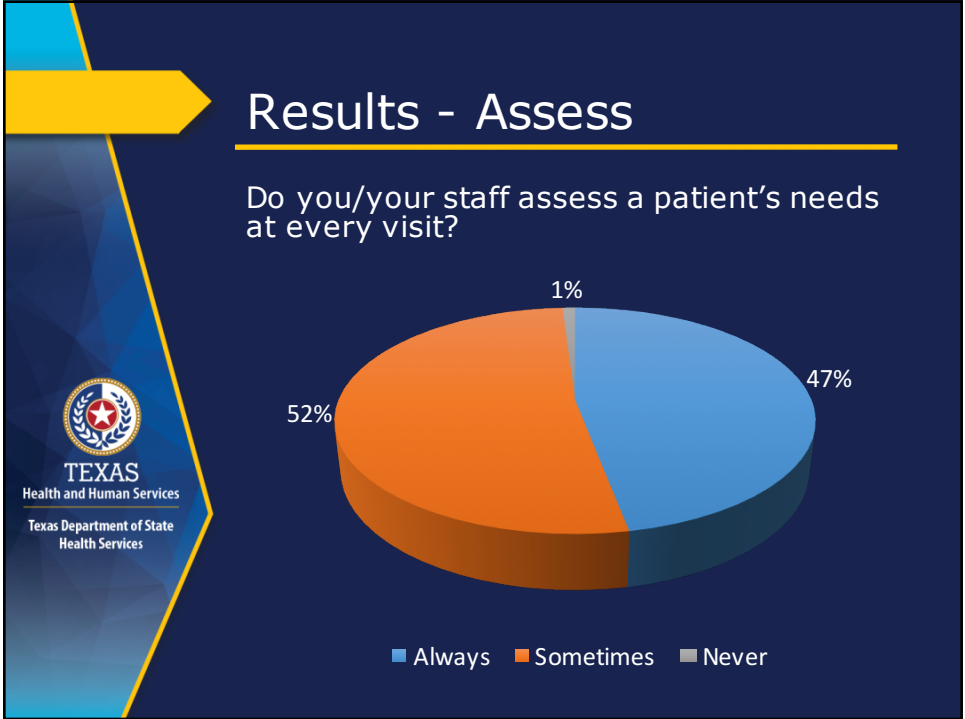
## 2017: Pharmacy Site Visits

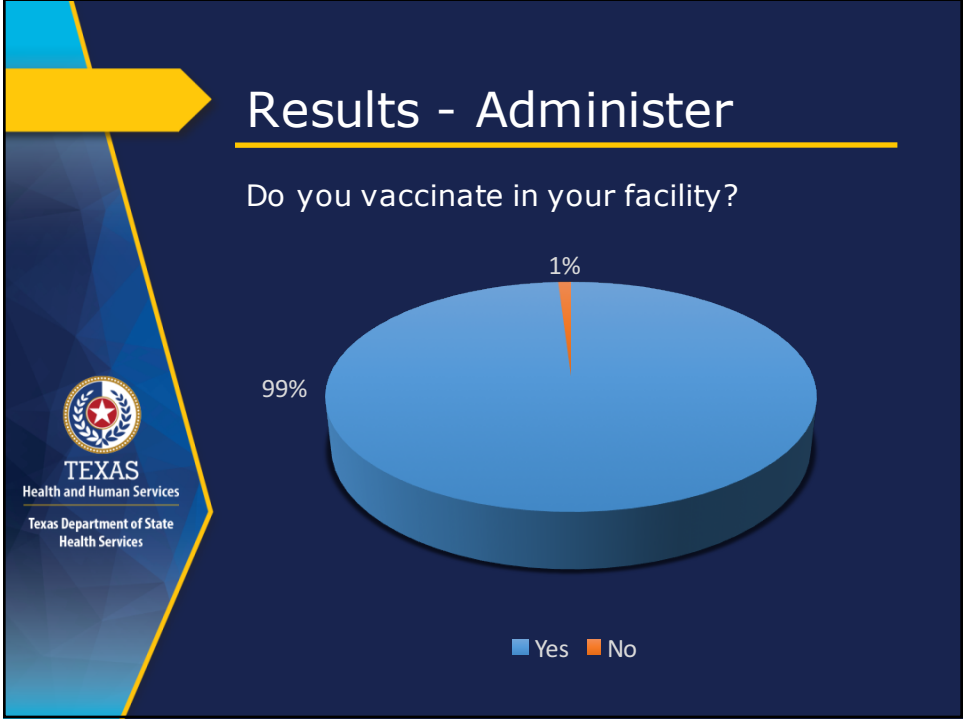
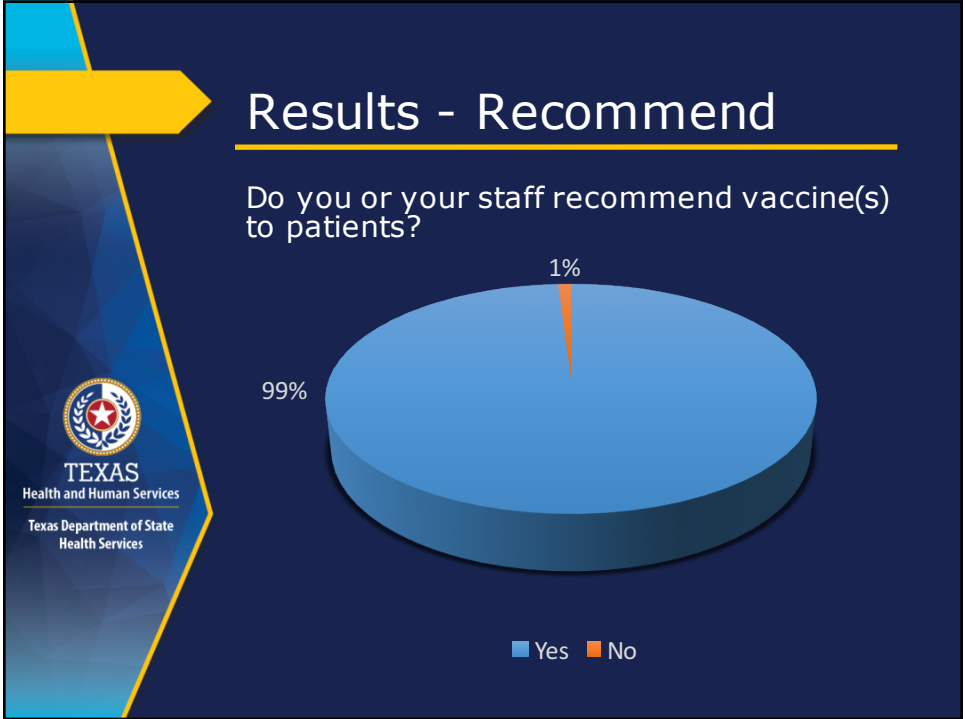
- December 2017 - February 2018
- 8 Initial site visits completed
- Independent pharmacy

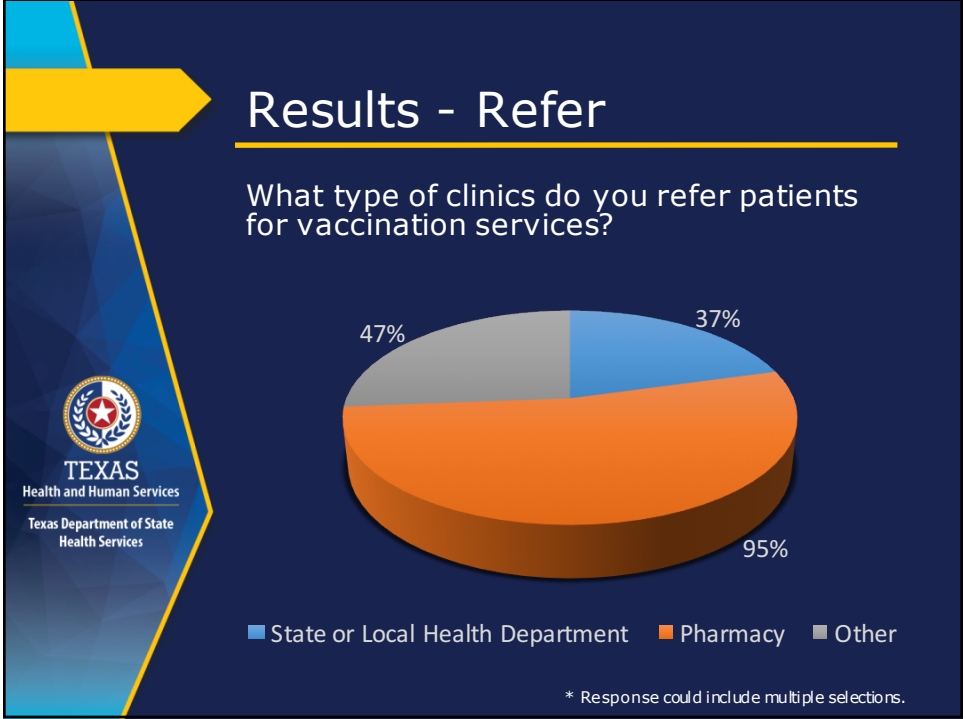
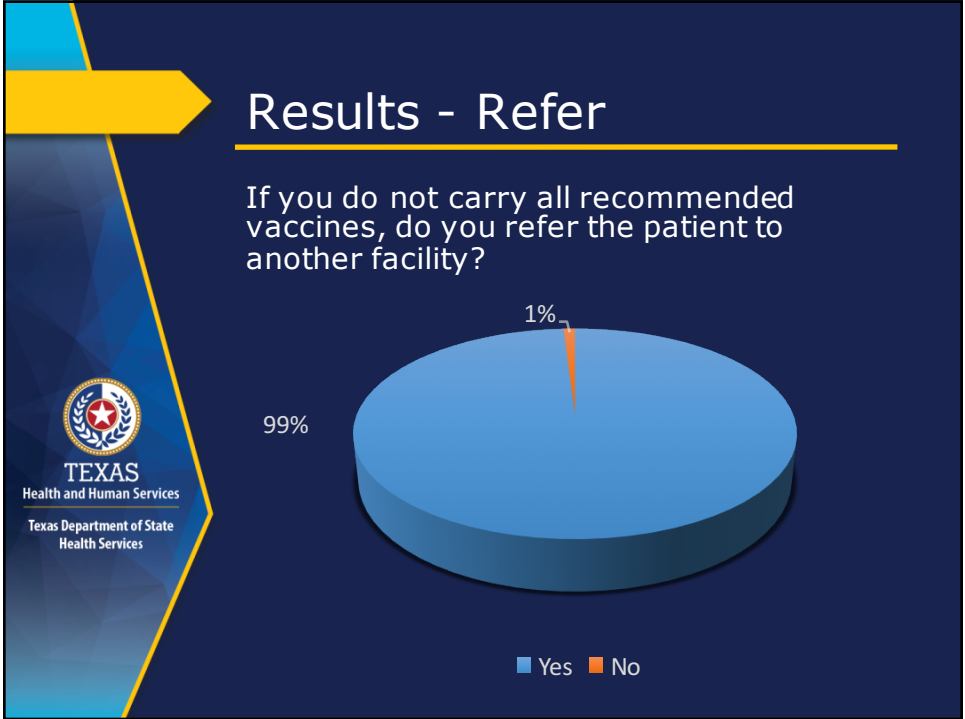
## 2018: Pharmacy Site Visits

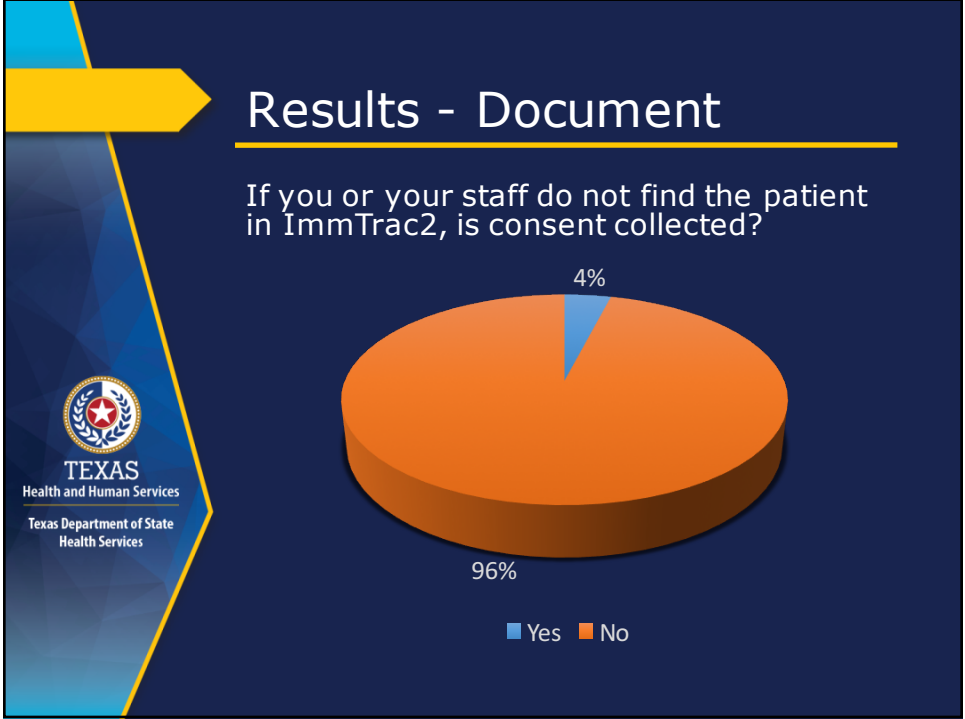
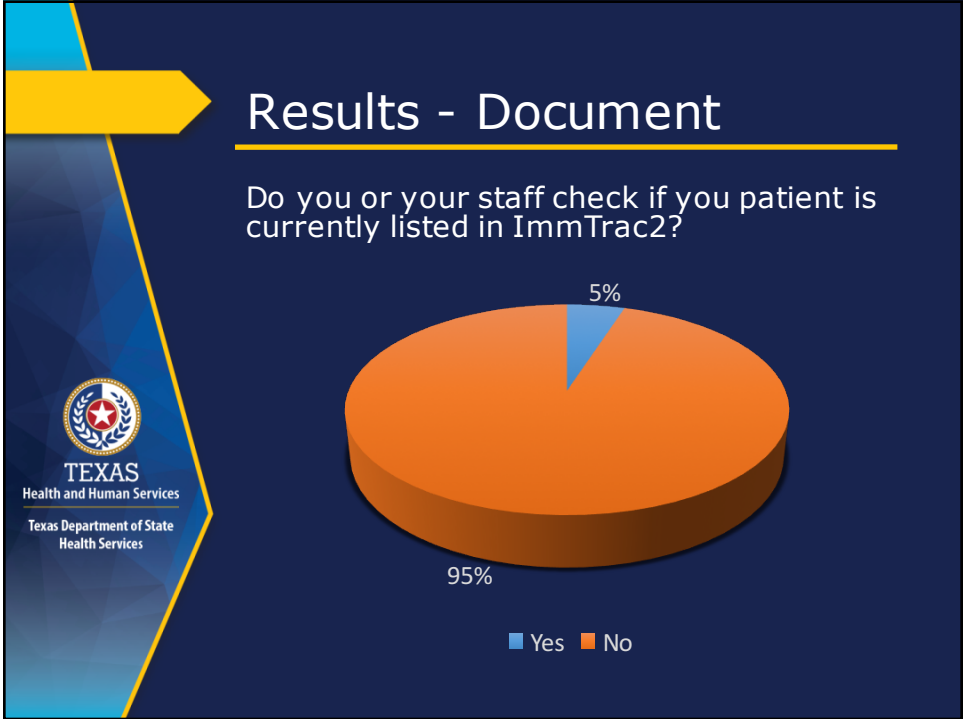
- June - August 2018
- 1,225 pharmacy sites
- Independent pharmacy
- Large chain pharmacy











## Pharmacy Registry Activity



- Pharmacies registered in ImmTrac2  
2018: 2,749  
2019: 3,420
- Immunization submitted:  
2018 (January): 2,322,628  
    Accepted – 395,913 (17%)  
    Rejected – 1,026,320 (44%)  
    Other\* - 900,395 (38%)  
  
2019 (April): 6,228,543  
    Accepted – 912,515 (15%)  
    Rejected – 5,314,991 (85%)  
    Other\* - 1,037

## Key Findings



Pharmacies are:

- Not using the registry to assess immunizations compared to EMR/HER
  - Incomplete immunization record
  - Over/under immunization
- Actively vaccinating and sending information to ImmTrac2
  - Number of accepted immunizations in ImmTrac2 shows need to improve adult consents

## Challenges

- Short amount of time for site visit with pharmacist.
  - Reduced education:
    - Immunization resource education
    - ImmTrac2 consent process education
- Pharmacy access to ImmTrac2 (web-based)
- Adoption of ImmTrac2 consent process in large pharmacy chain systems



## Moving Forward

Continue to:

- Strengthen relationships with pharmacies
- Work with pharmacies to:
  - Adopt a process to assess patient immunization records using ImmTrac2
  - Educate on ImmTrac2 consent process to increase the number of accepted immunizations





TEXAS  
Health and Human  
Services

Texas Department of State  
Health Services

# Thank You!

Denise Starkey, MPH, MA

[Denise.Starkey@dshs.texas.gov](mailto:Denise.Starkey@dshs.texas.gov)