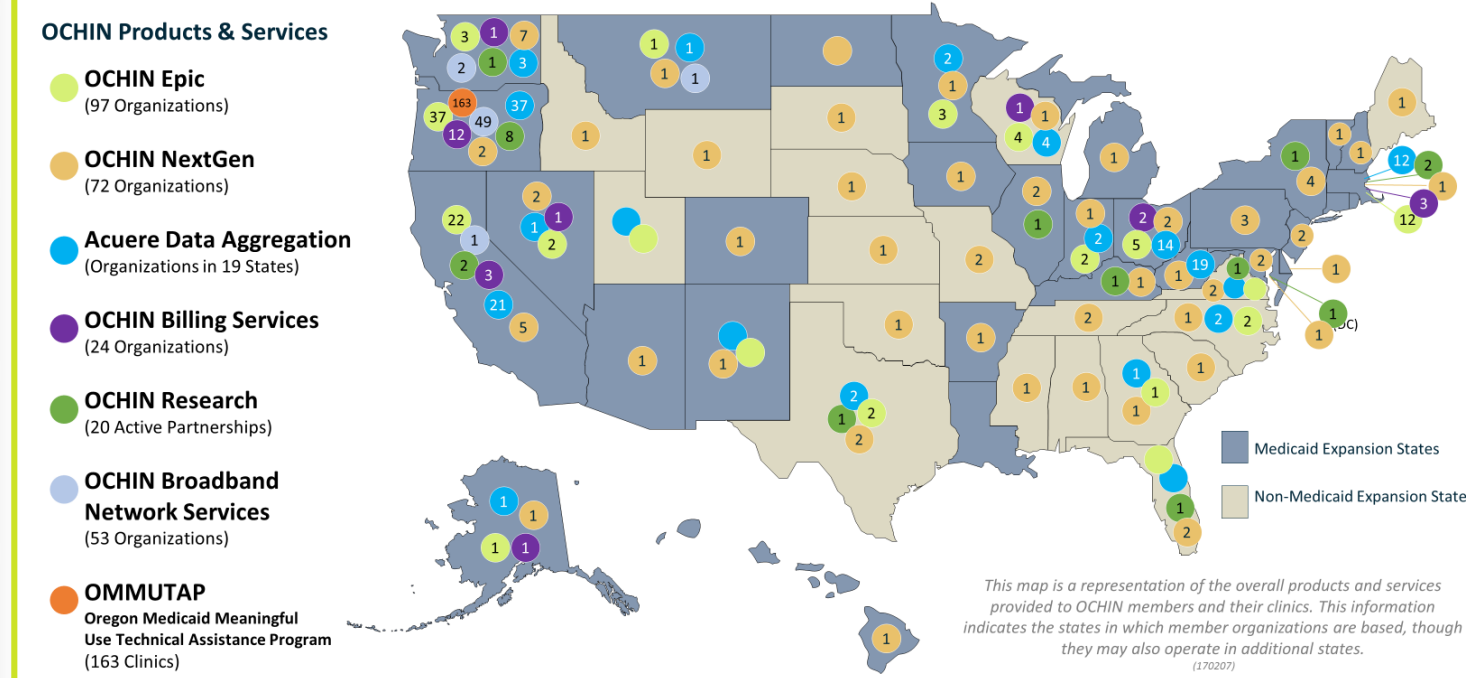
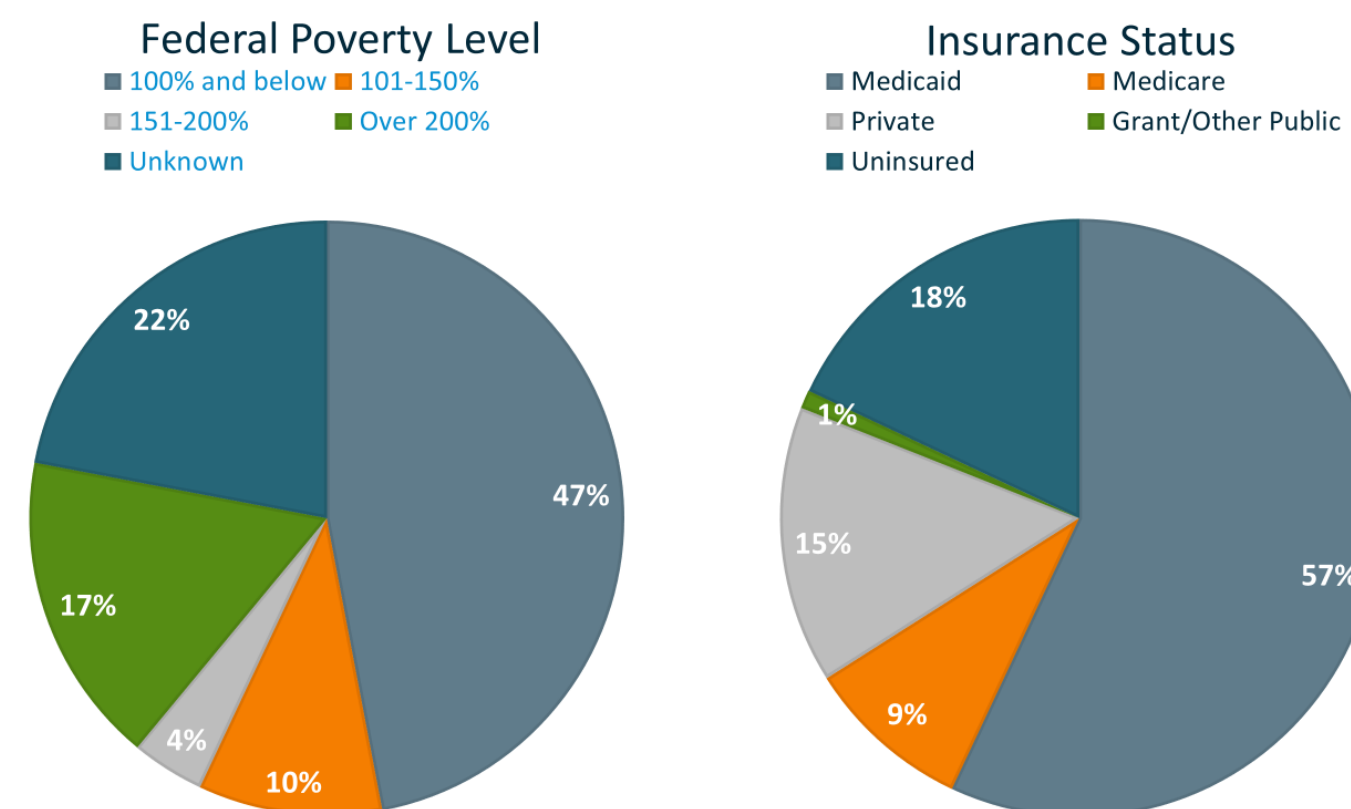


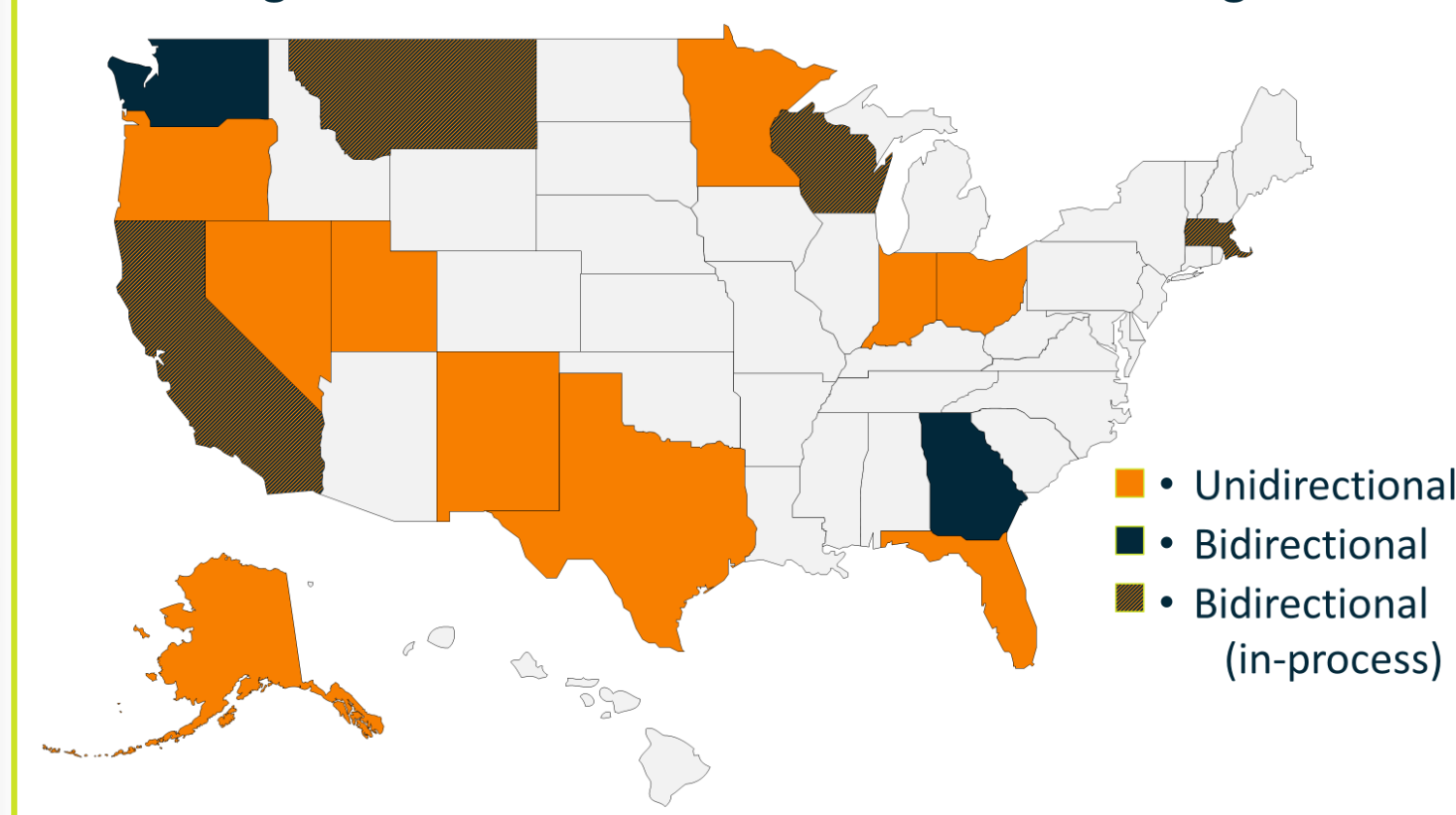
What does OCHIN Do?



Patient Profile (CY2016)



Integration Levels with State Immunization Registries



Vaccination Support in EHR

- Decision support at Point of Care
 - Best Practice Alerts to drive provider workflows based on presence of immunization administration record
- Monitoring Performance
 - Reporting on frequency of immunization administration by providers/organizations and broken down by patient demographic (race, ethnicity, sex, etc.)
- Communication with Immunization Information Systems (IIS)
 - Automatic submission of administration information
 - Bidirectional querying for previous administration information



Challenges to Implementing Bidirectional Capability

- Limited IIS that are capable and variation in format/process among those
- Backlogs to enroll for connection and testing
- Costs associated with development and licensing of interfaces
- Query and response processing
 - How to display incoming administration records in the EHR
 - Standardizing immunization codes used by each IIS, the CDC, and the EHR
- Patient matching and chart reconciliation
 - IIS does not return anything if a single patient is not identified
 - End user must follow appropriate workflow to bring IIS administration record into the EHR or the process will have to be repeated each time
- Identifying the correct IIS to query
 - Patients travel, but their records may not; becomes more important as bidirectional interfaces proliferate

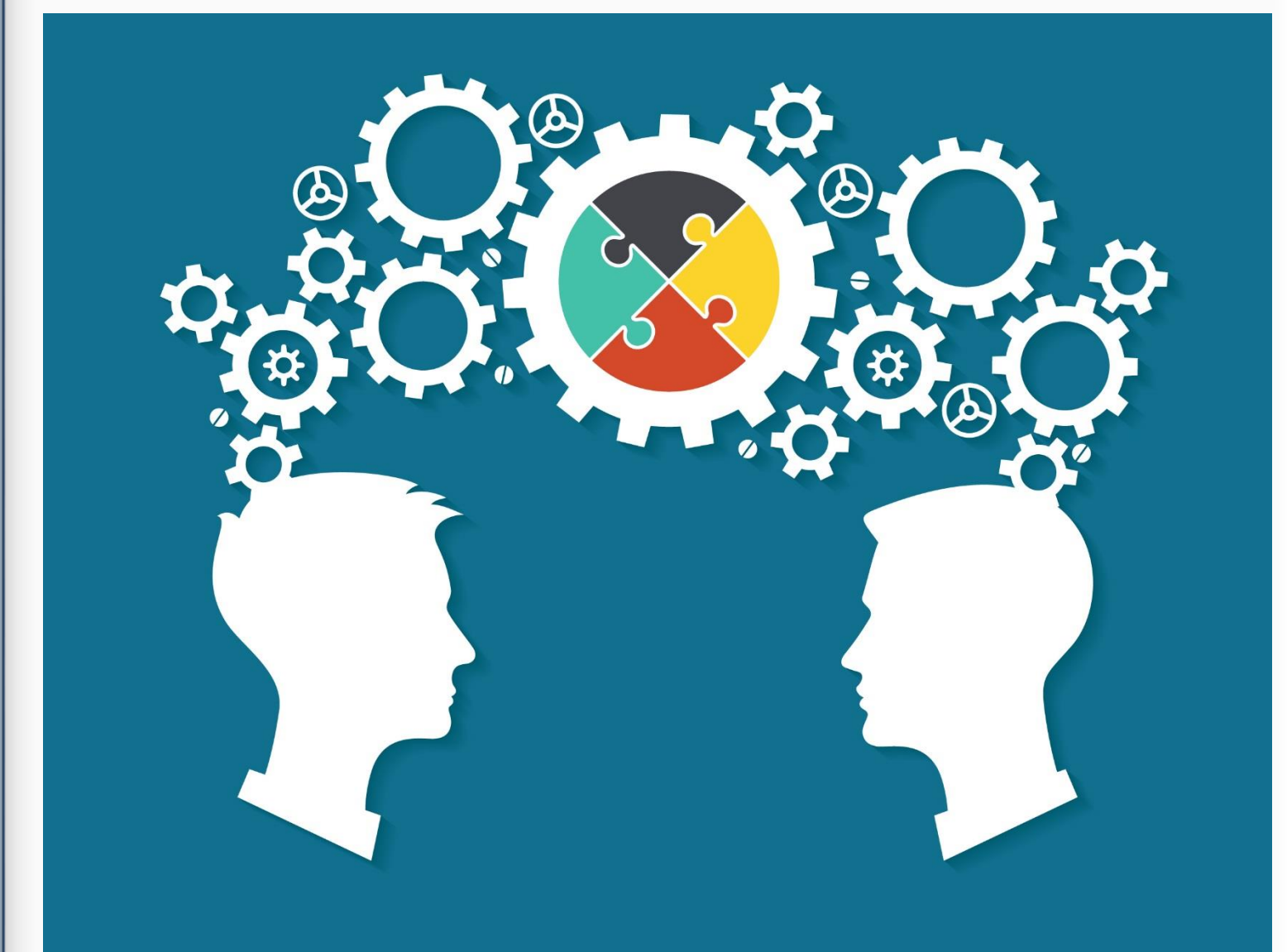


Why is Bidirectional Important?

- Medically underserved patient populations are...
 - Less likely to have continuity with their provider/care
 - More likely to have language and health literacy barriers
 - More likely to suffer from poor health overall
- Resource use and cost
 - Avoid duplication of administrations
 - Minimize wasted staff/provider time spent researching other contact points where patient may have received a vaccine
- Difficult for primary care providers to receive information about the large number of immunizations that occur in other settings
 - Employer, pharmacy, school, church, etc.
- The CDC and National Association of Community Health Centers (NACHC) recognize the need for better EHR documentation of administrations and are assisting OCHIN with improving bidirectional IIS exchange

What's Next?

- Continue to build out bidirectional IIS interfaces with new states
- Ensure reconciliation process works with new interfaces
- Work with EHR vendor to verify query tool regularly identifies appropriate state IIS to query
- Leverage testing and workflow experience to streamline further bidirectional implementations



Learnings

- A national IIS must be implemented; or uniform standards for bidirectional IIS interfaces are necessary to streamline adoption and improve patient and population health
- Patient charts are only as accurate as the end user makes them; users must correctly reconcile records
- Accurate mapping is critical for success and must be done in advance of implementing query functionality