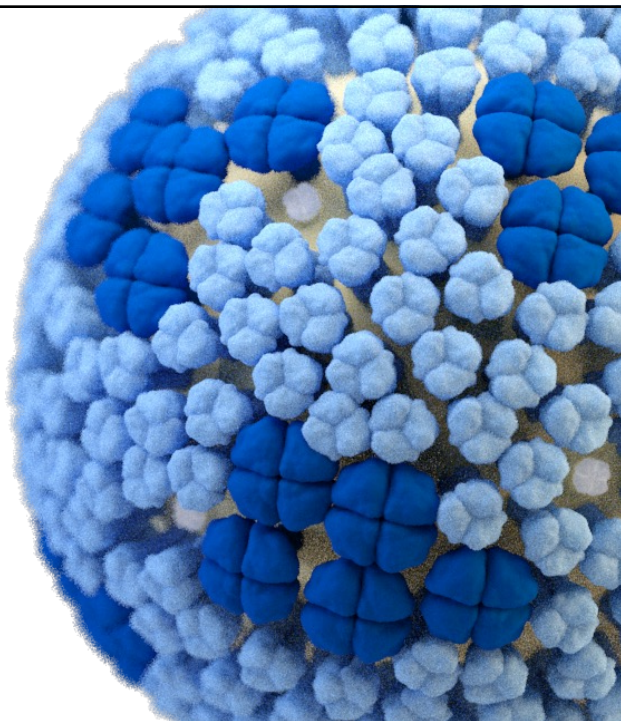


INFLUENZA ACTIVITY UPDATE: 2022-2023 Influenza Season

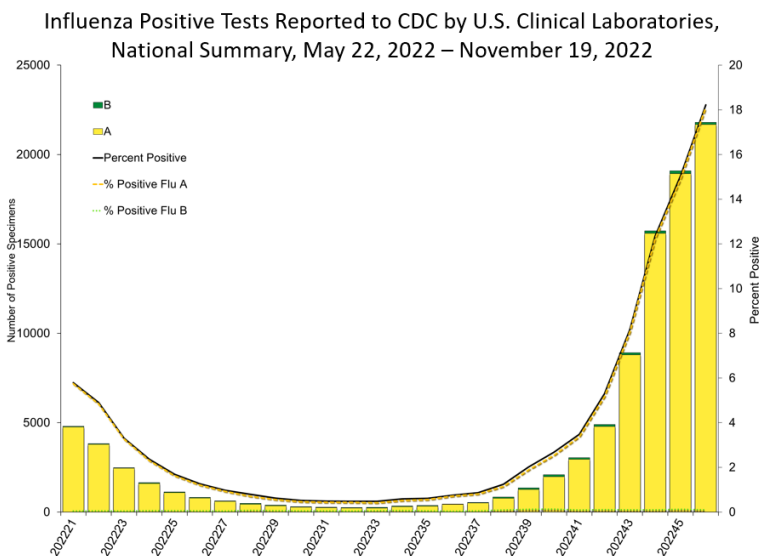
December 1, 2022

Katie Tastad, MPH
Influenza Division, CDC



1

Virologic Surveillance – Percent Positive for Influenza



2

Virologic Surveillance – Virus Characteristics



Influenza Positive Tests Reported to CDC by Public Health Laboratories, National Summary, 2022-23 Season, week ending Nov 19, 2022
 Reported by U.S. WHO/NREVSS Collaborating Laboratories and ILINet

- A (H1)
- A (Unable to Subtype)
- A (H3)
- A (H1N1)pdm09
- A (Subtyping not Performed)
- B (Lineage Unspecified)
- H3N2v
- B (Victoria Lineage)
- B (Yamagata Lineage)
- No Data/Small Data Sample



- 99% influenza A
 - 78% H3
 - 22% H1
- 1% influenza B
 - 100% Victoria lineage

Viruses Collected in the U.S. since May 1, 2022

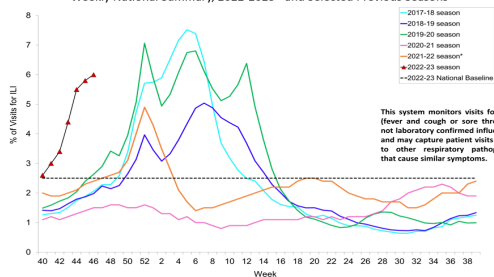
Virus	Genetic Characterization		Antigenic Characterization	
	Number Tested	Clade/Subclade	Number Tested	Similarity to vaccine reference virus
A/H1	74	7% - 6B.1A.5a.1	33	94% similar to cell-grown
		93% - 6B.1A.5a.2		94% similar to egg-grown
A/H3	510	100% - 3C.2a1b.2a.2	50	100% similar to cell-grown 96% similar to egg-grown
B/Victoria	5	100% - V1A.3	1	100% similar to cell-grown
				100% similar to egg-grown



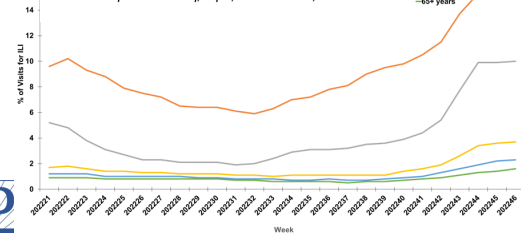
3

Outpatient Respiratory Illness

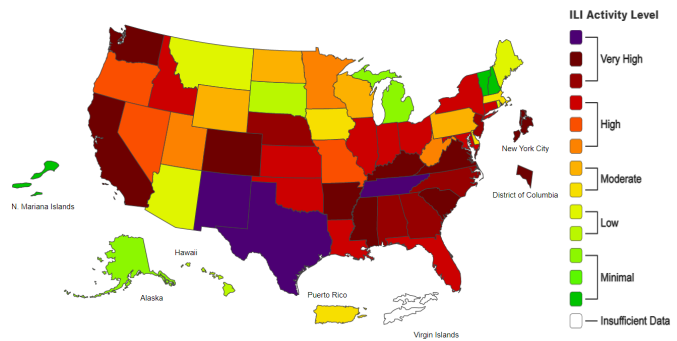
Percentage of Outpatient Visits for Respiratory Illness Reported By The U.S. Outpatient Influenza-like Illness Surveillance Network (ILINet), Weekly National Summary, 2022-2023* and Selected Previous Seasons



Percentage of Outpatient Visits for Respiratory Illness by Age Group Reported by the U.S. Outpatient Influenza-like Illness Surveillance Network (ILINet), Weekly National Summary, May 22, 2022-November 19, 2022*



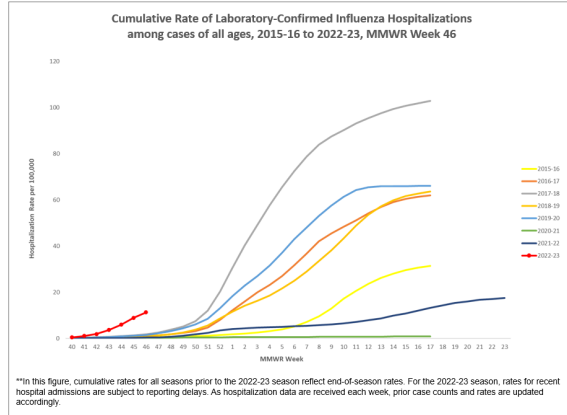
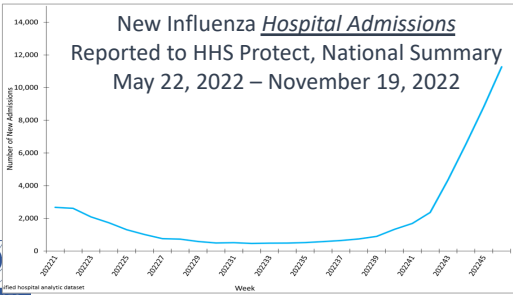
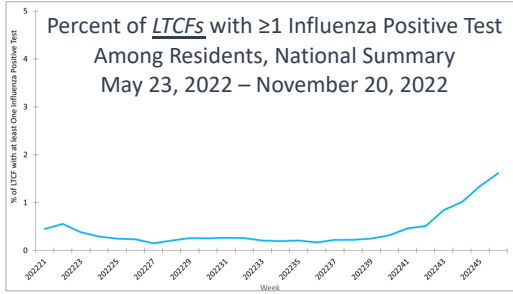
2022-23 Influenza Season Week 46 ending Nov 19, 2022



- Highest levels match with areas reporting increased flu activity
- Also being driven by
 - RSV
 - Rhinovirus/Enterovirus
 - Sars-CoV-2

4

Long-term Care Facilities (LTCF) and Hospitals



- Week 46**
Rate per 100,000
- Prior 10 years, overall: 0.1 - 1.4
 - 2022, overall: 11.3

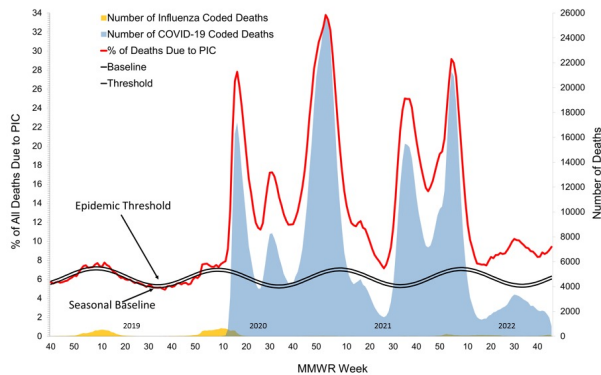
Age Group	2022 Rate	Prior 10 yr. Rate
0-4 years	20.7	0 – 2.2
5-17 years	10.3	0 – 0.7
18-49 years	5.6	0.1 – 0.7
50-64 years	11.1	0.1 – 1.4
65+ years	25.9	0.4 – 3.6



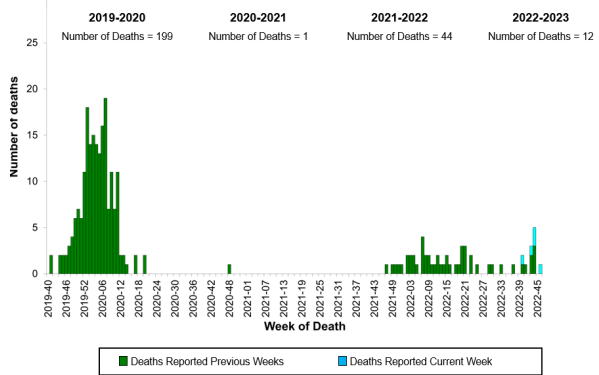
5

Mortality

Pneumonia, Influenza, and COVID-19 Mortality from the National Center for Health Statistics Mortality Surveillance System
Data as of November 23, 2022



Influenza-Associated Pediatric Deaths by Week of Death, 2019-2020 season to 2022-2023 season



6

Summary

- Influenza activity is increasing earlier than “usual.”
- It’s too early to know how severe the influenza season will be.
- In the U.S. so far this season influenza has caused:
 - At least 6.2 million symptomatic illnesses
 - At least 3 million medical visits
 - At least 53,000 hospitalizations
 - At least 2,900 deaths
- Other respiratory viruses are at elevated levels at the same time.
- It’s still a great time to get vaccinated!



7

Questions?

Katie Tastad (qwu5@cdc.gov)

For more information, contact CDC
1-800-CDC-INFO (232-4636)
TTY: 1-888-232-6348 www.cdc.gov

The findings and conclusions in this report are those of the authors and do not necessarily represent the official position of the Centers for Disease Control and Prevention.



8