



Influenza Activity in the United States 2021 – 2022 Season

Data through the week ending December 25, 2021 (week 51)

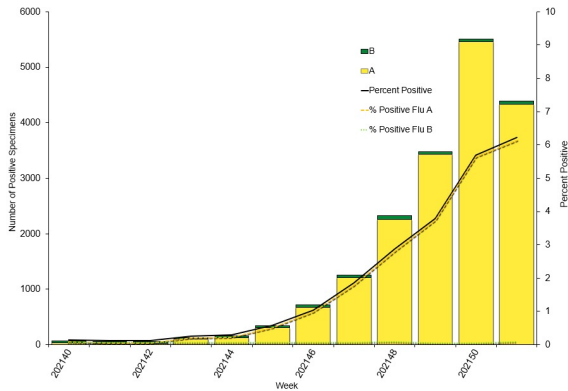


<https://www.cdc.gov/flu/weekly/index.htm>

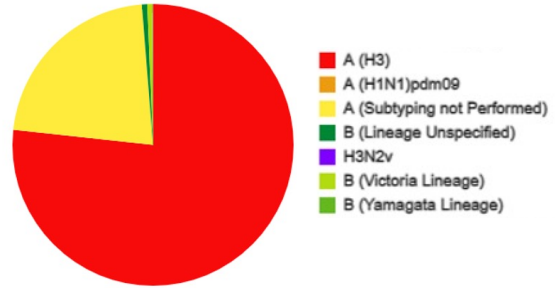
1

Influenza Virologic Surveillance – United States, October 3, 2021, through December 25, 2021

Influenza Positive Tests Reported to CDC
by U.S. Clinical Laboratories
National Summary



Influenza Positive Tests Reported to CDC
by U.S. Public Health Laboratories (PHL)
National Summary



Number of influenza positives = 5,357

2

Influenza Virologic Surveillance – United States,
October 3, 2021, through December 25, 2021

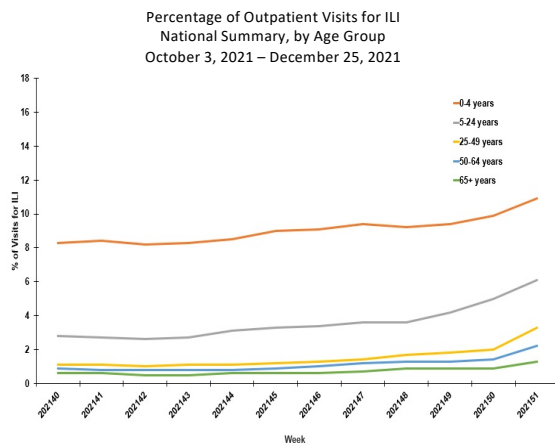
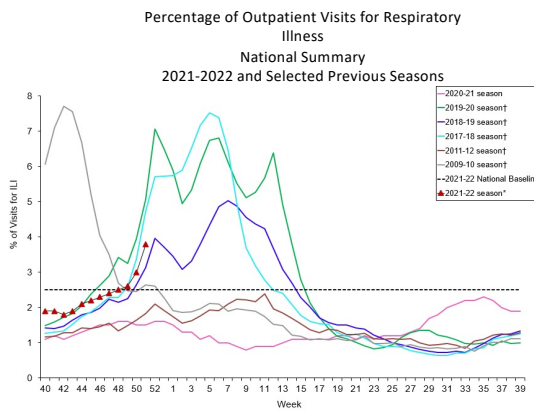
Virus Subtype or Lineage	Genetic Characterization				
	Total No. of Subtype/Lineage Tested	HA Clade	Number (% of subtype/lineage tested)	HA Subclade	Number (% of subtype/lineage tested)
A/H1	3				
		6B.1A	3 (100%)	5a.1	2 (67%)
				5a.2	1 (33%)
A/H3	184				
		3C.2a1b	184 (100%)	1a	0
				1b	1 (1%)
				2a	0
				2a.1	0
				2a.2	183 (99%)
		3C.3a	0	3a	0
B/Victoria	16				
		V1A	16 (100%)	V1A	0
				V1A.1	0
				V1A.3	9 (56%)
				V1A.3a	0
				V1A.3a.1	0
				V1A.3a.2	7 (44%)
B/Yamagata	0				
		Y3	0		

Antiviral Resistance

- *Oseltamivir, Peramivir, Zanamivir*
 - 210 tested
 - No reduced inhibition
- *Baloxavir*
 - 193 tested
 - No decreased susceptibility

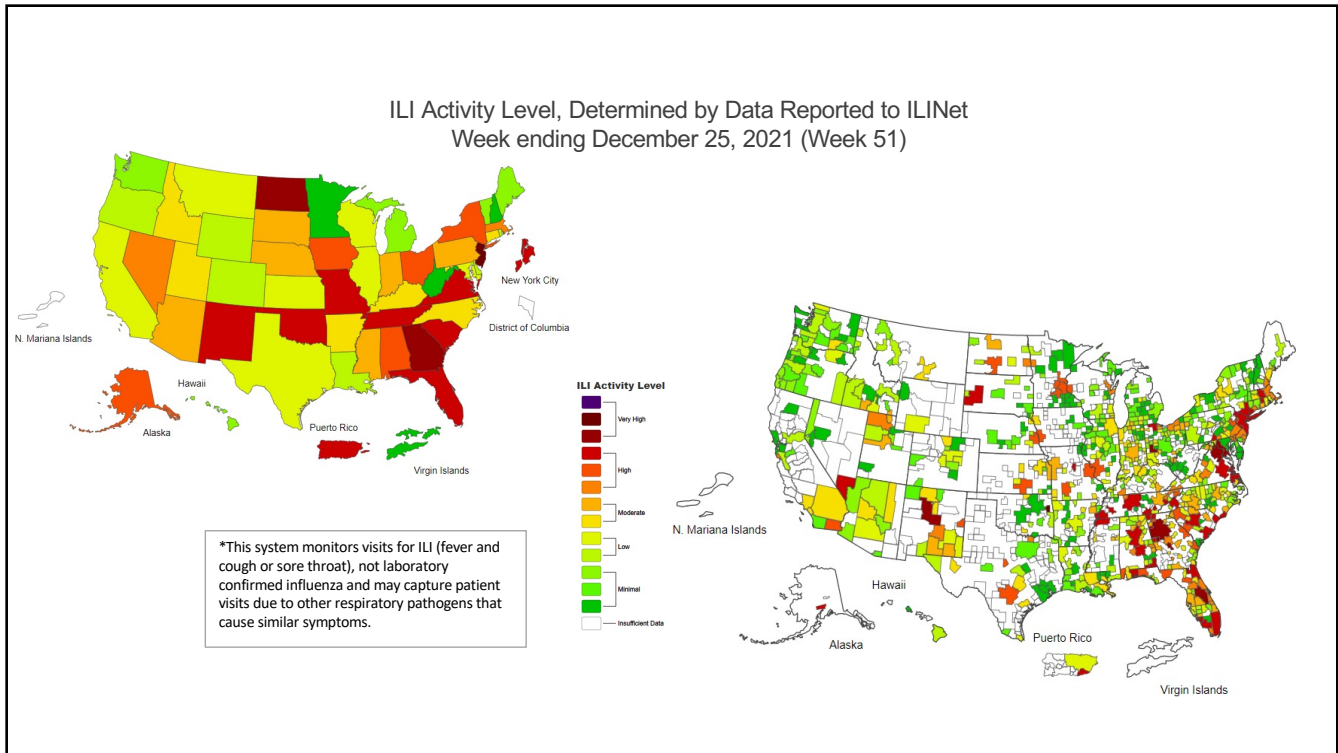
3

Outpatient Visits for Respiratory Illness,
Reported by the U.S. Outpatient Influenza-like Illness Surveillance Network (ILINet)

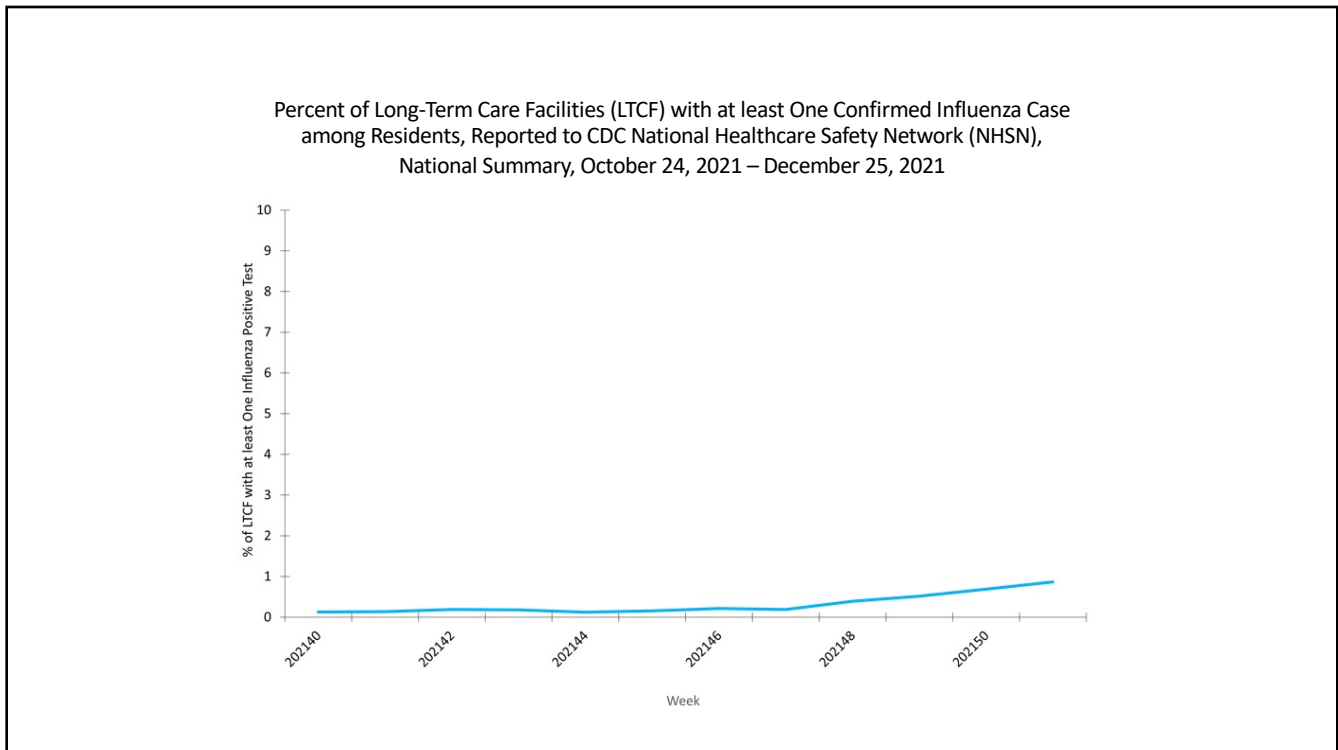


*This system monitors visits for respiratory illness that includes fever plus cough or sore throat (referred to as ILI) not laboratory confirmed influenza, and may capture patient visits due to other respiratory pathogens that cause similar symptoms.

4



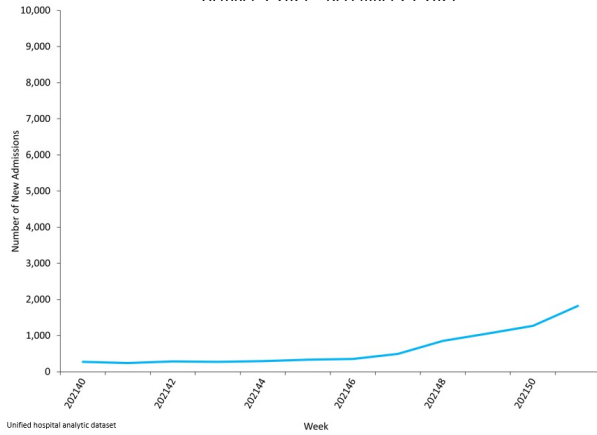
5



6

Influenza Hospitalizations United States

Influenza Hospital Admissions Reported to HHS Protect
National Summary
October 3, 2021 – December 25, 2021



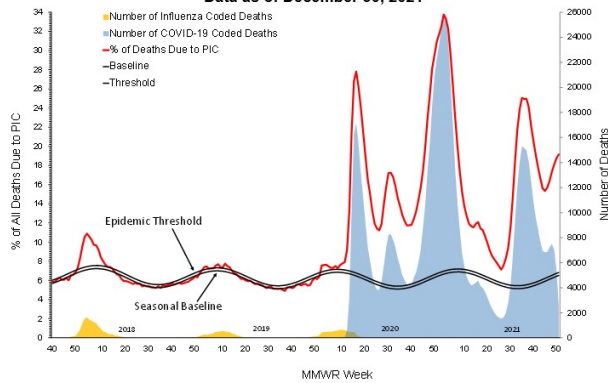
FluSurv-NET
October 1, 2021 – December 25, 2021

- Population-based surveillance
- Lab-confirmed influenza-related hospitalizations
- Select counties in 14 states, represents 9% of the U.S. population
- 535 hospitalizations reported
- 1.8 hospitalizations per 100,000 population

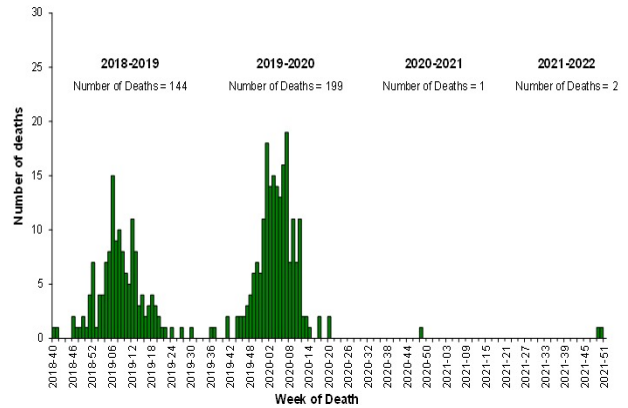
7

Influenza-Related Mortality United States

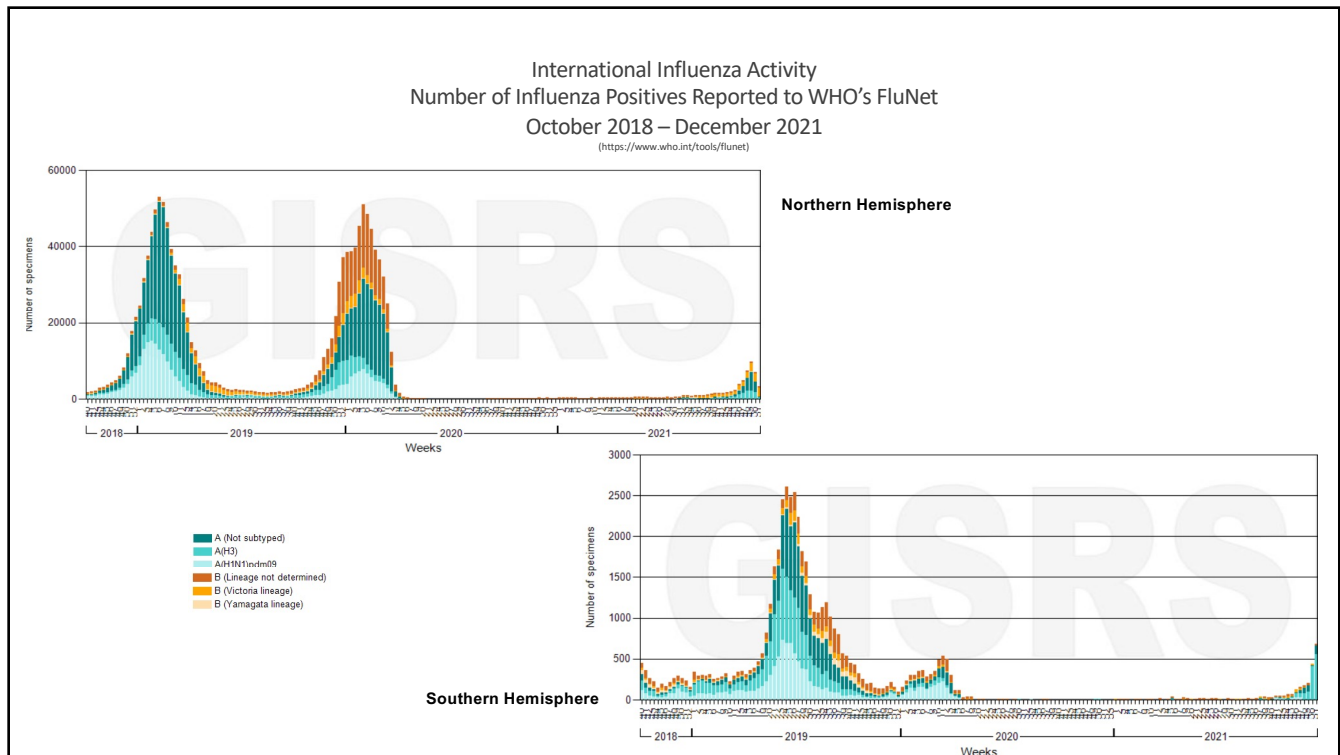
Pneumonia, Influenza, and COVID-19 Mortality from the National Center for Health Statistics Mortality Surveillance System
Data as of December 30, 2021



Number of Influenza-Associated Pediatric Deaths by Week of Death, 2018-2019 season to 2021-2022 season



8



9

Summary

- Influenza activity is increasing; level of activity varies by region.
- Majority of viruses detected are A(H3N2).
 - Most are genetically closely related to the vaccine virus but have some antigenic differences
 - No antiviral resistant viruses identified
- Percentage of outpatient visits for respiratory illness is increasing and is above the national baseline.
 - Influenza is contributing but so are other respiratory viruses.
 - Relative contribution of the different viruses varies by location.
- Flu hospitalizations are starting to increase.
- The flu season is just getting started so there is still time to get vaccinated.

10

Additional Information

Influenza Activity

- FluView
 - <https://www.cdc.gov/flu/weekly/index>
- FluView Interactive
 - <https://www.cdc.gov/flu/weekly/fluviewinteractive.htm>
- WHO's FluNet
 - <https://www.who.int/tools/flunet>

Other Respiratory Virus Activity

- COVID Data Tracker Weekly Review
 - <https://www.cdc.gov/coronavirus/2019-ncov/covid-data/covidview/index.html>
- COVID Data Tracker
 - <https://covid.cdc.gov/covid-data-tracker/#datatracker-home>
- National Respiratory Virus Surveillance System (NREVSS)
 - <https://www.cdc.gov/surveillance/nrevss/index.html>