



Influenza Activity in the United States 2021 – 2022 Season

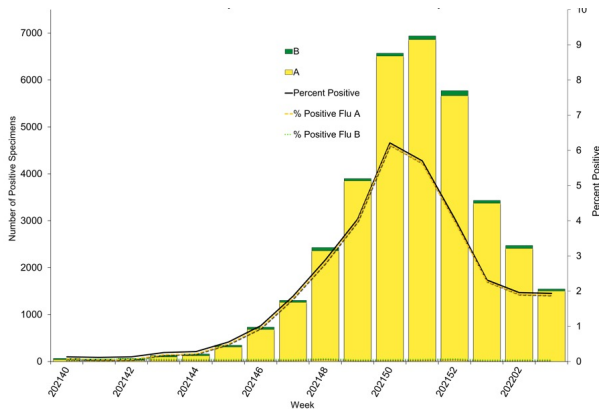
Data through the week ending January 22, 2022
(week 3)



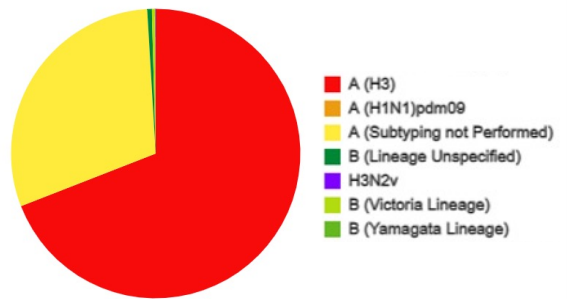
<https://www.cdc.gov/flu/weekly/index.htm>

Influenza Virologic Surveillance – United States, October 3, 2021 through January 22, 2022

Influenza Positive Tests Reported to CDC
by U.S. Clinical Laboratories
National Summary



Influenza Positive Tests Reported to CDC
by U.S. Public Health Laboratories (PHL)
National Summary



Number of influenza positives = 10,012

Influenza Virologic Surveillance – United States,
October 3, 2021, through January 22, 2022

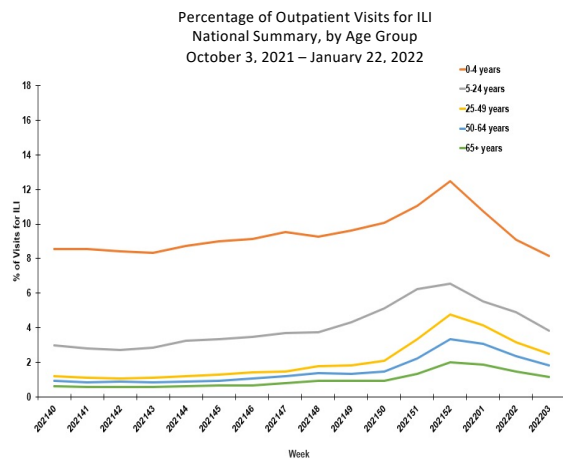
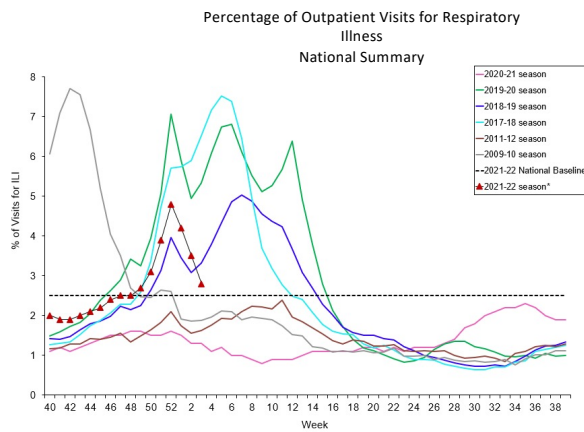
Virus Subtype or Lineage	Genetic Characterization				
	Total No. of Subtype/Lineage Tested	HA Clade	Number (% of subtype/lineage tested)	HA Subclade	Number (% of subtype/lineage tested)
A/H1	3	6B.1A	3 (100%)	5a.1	2 (66.7%)
				5a.2	1 (33.3%)
A/H3	437	3C.2a1b	437(100%)	1a	1 (0.2%)
				1b	1 (0.2%)
				2a	0
				2a.1	0
				2a.2	435 (99.5%)
		3C.3a	0	3a	0
B/Victoria	20	V1A	20 (100%)	V1A	0
				V1A.1	0
				V1A.3	9 (45.0%)
				V1A.3a	0
				V1A.3a.1	0
				V1A.3a.2	11 (55.0%)
B/Yamagata	0	Y3	0		

Antiviral Resistance

- *Oseltamivir, Peramivir, Zanamivir*
 - 484 tested
 - No reduced inhibition
- *Baloxavir*
 - 479 tested
 - No decreased susceptibility

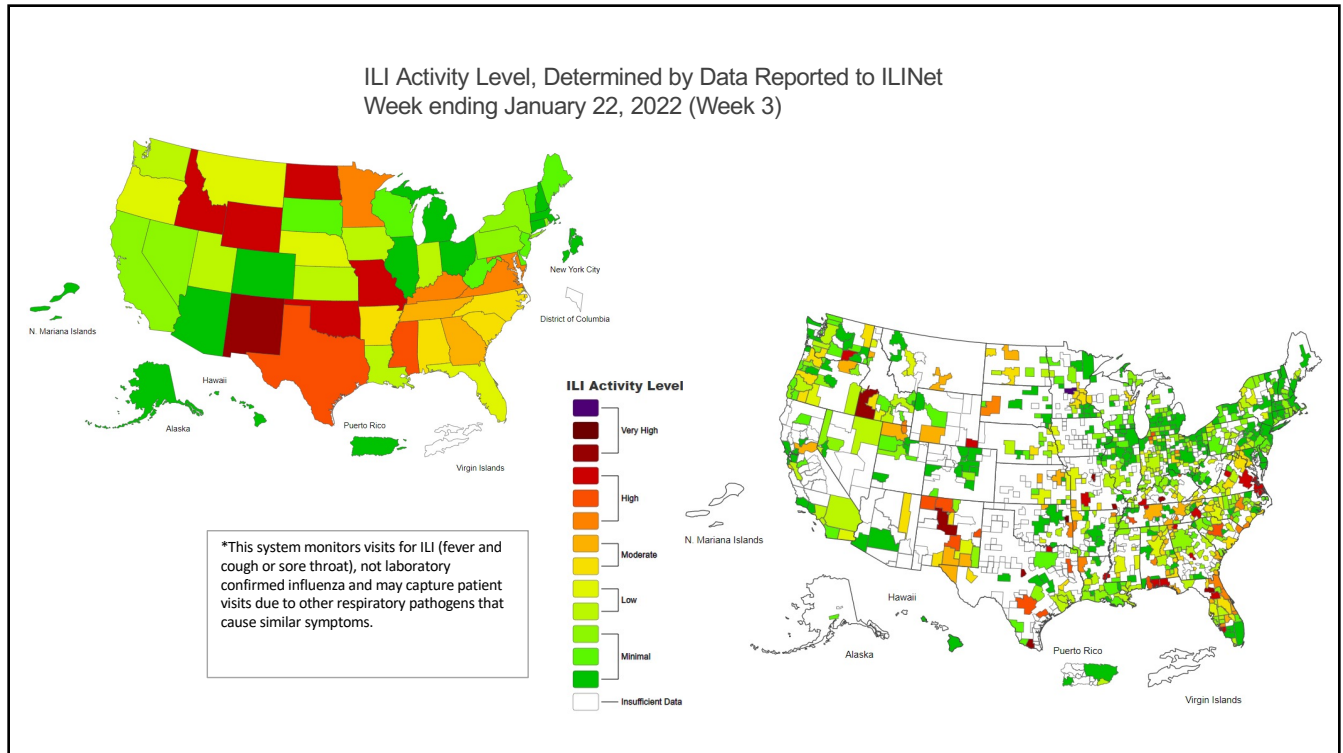
3

Outpatient Visits for Respiratory Illness,
Reported by the U.S. Outpatient Influenza-like Illness Surveillance Network (ILINet)

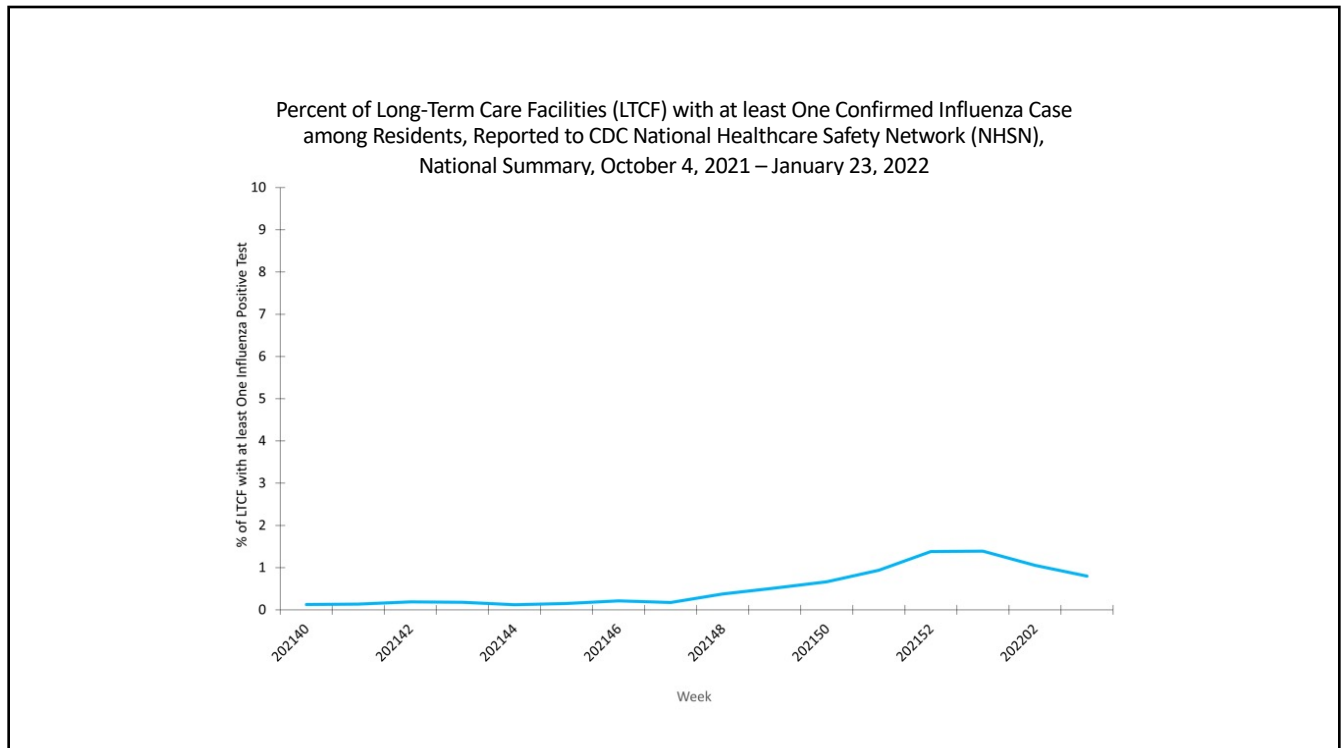


*This system monitors visits for respiratory illness that includes fever plus cough or sore throat (referred to as ILI) not laboratory confirmed influenza, and may capture patient visits due to other respiratory pathogens that cause similar symptoms.

4

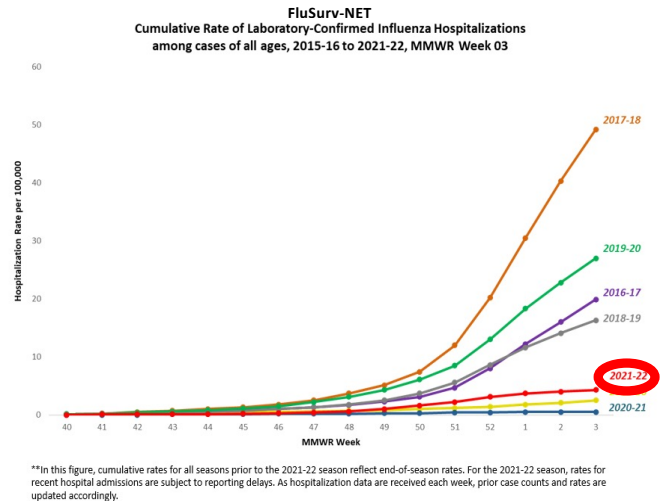
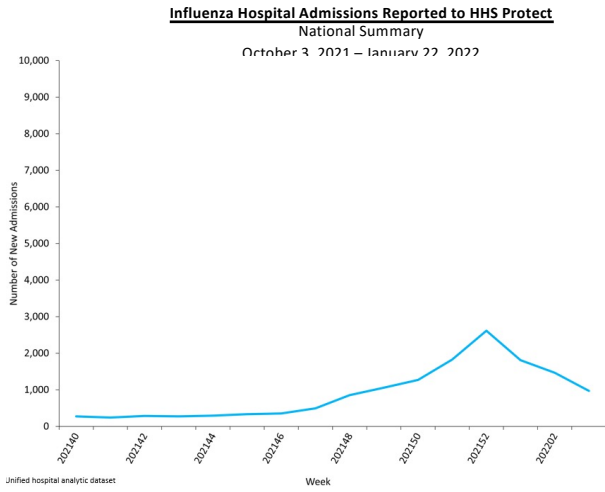


5



6

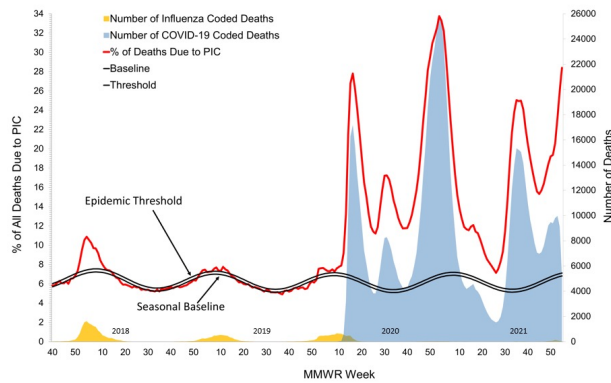
Influenza Hospitalizations United States



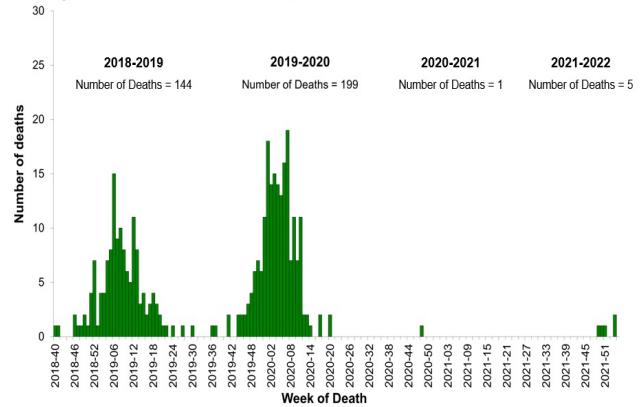
7

Influenza-Related Mortality United States

**Pneumonia, Influenza, and COVID-19 Mortality from
the National Center for Health Statistics Mortality Surveillance System**
Data as of January 27, 2022



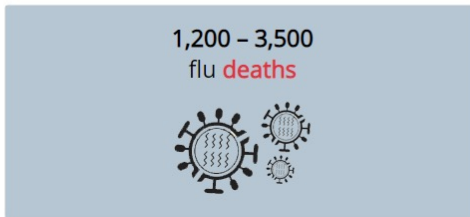
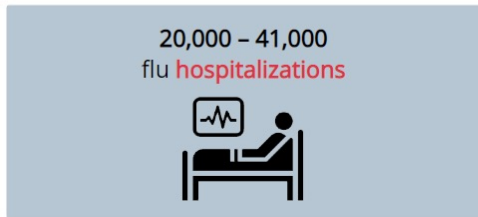
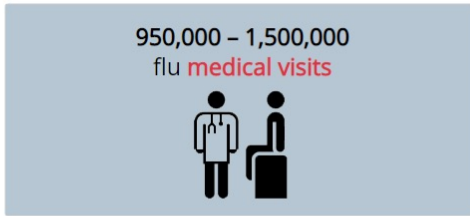
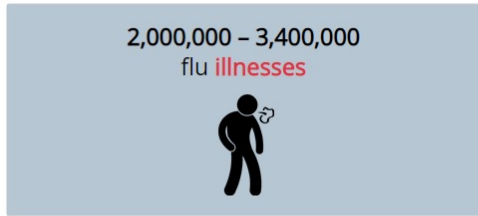
**Influenza-Associated Pediatric Deaths
by Week of Death, 2018-2019 season to 2021-2022 season**



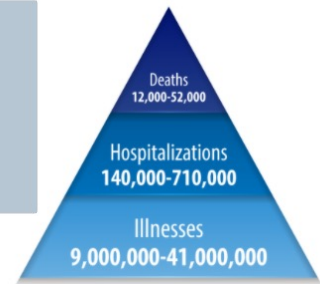
8

2021-2022 U.S. Flu Season: Preliminary In-Season Burden Estimates

CDC estimates* that, from **October 1, 2021** through **January 22, 2022**, there have been:



Estimated Range of Annual Burden of Flu in the U.S. from **2010-2020**

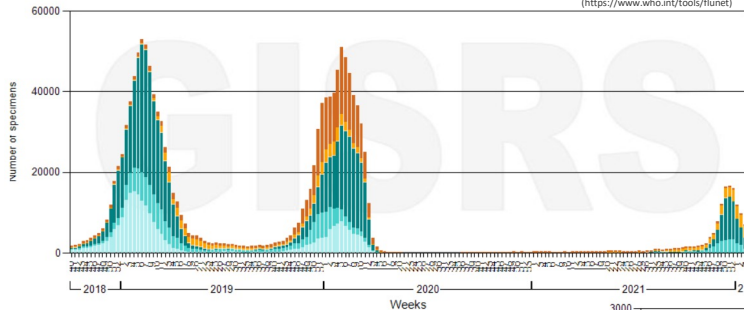


<https://www.cdc.gov/flu/about/burden/preliminary-in-season-estimates.htm>

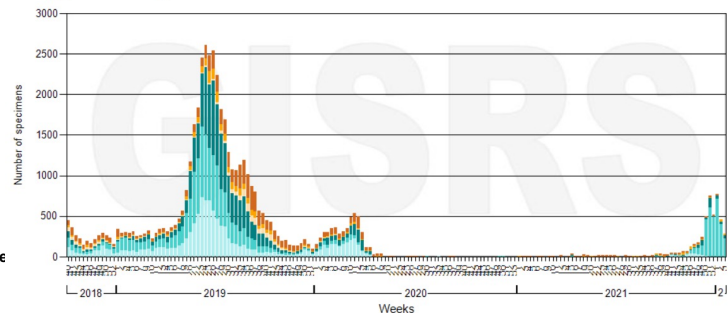
9

International Influenza Activity
Number of Influenza Positives Reported to WHO's FluNet
October 2018 – January 22, 2022

(<https://www.who.int/tools/flu-net>)



Northern Hemisphere



Southern Hemisphere

- A (Not subtyped)
- A(H3)
- A(H1N1)vm09
- B (Lineage not determined)
- B (Victoria lineage)
- B (Yamagata lineage)

10

Summary

- Influenza surveillance indicators show that influenza activity has remained level or decreased slightly in the past few weeks.
 - This is occurring in the context of overall levels of respiratory illness declining.
- Influenza activity is difficult to predict but it is expected to continue for several more weeks.
- Majority of viruses detected are A(H3N2).
 - Most are genetically closely related to the vaccine virus but have some antigenic differences
 - No antiviral resistant viruses identified
- Preliminary in-season influenza burden estimates are now being updated and posted weekly.
- CDC continues to recommend flu vaccination as long as flu activity continues.

11

Additional Information

Influenza Activity

- FluView
 - <https://www.cdc.gov/flu/weekly/index>
- FluView Interactive
 - <https://www.cdc.gov/flu/weekly/fluviewinteractive.htm>
- WHO's FluNet
 - <https://www.who.int/tools/flunet>

Other Respiratory Virus Activity

- COVID Data Tracker Weekly Review
 - <https://www.cdc.gov/coronavirus/2019-ncov/covid-data/covidview/index.html>
- COVID Data Tracker
 - <https://covid.cdc.gov/covid-data-tracker/#datatracker-home>
- National Respiratory Virus Surveillance System (NREVSS)
 - <https://www.cdc.gov/surveillance/nrevss/index.html>

12