

INFLUENZA ACTIVITY UPDATE

Activity through the week ending October 1, 2022
(week 39)

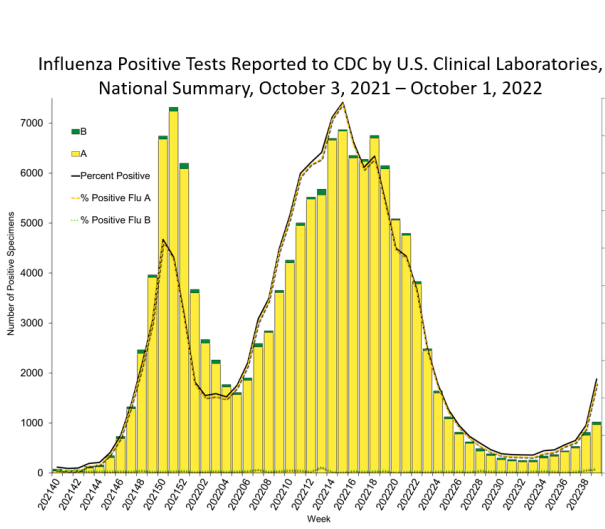
Alicia Budd
Influenza Division, CDC
October 13, 2022



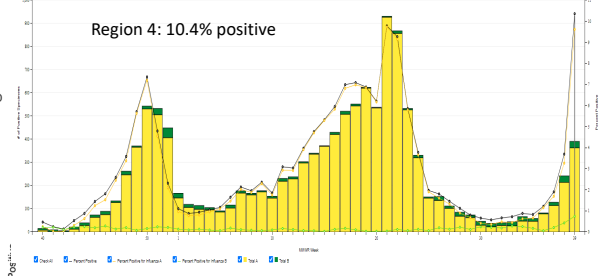

1

Virologic Surveillance – clinical laboratories

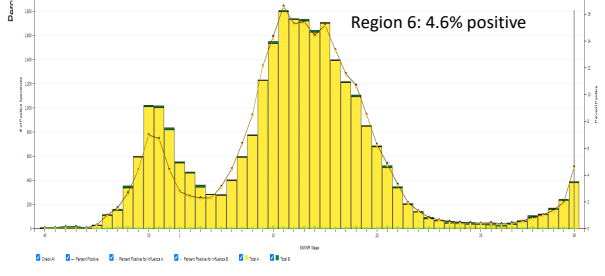
Influenza Positive Tests Reported to CDC by U.S. Clinical Laboratories,
National Summary, October 3, 2021 – October 1, 2022




Region 4: 10.4% positive



Region 6: 4.6% positive



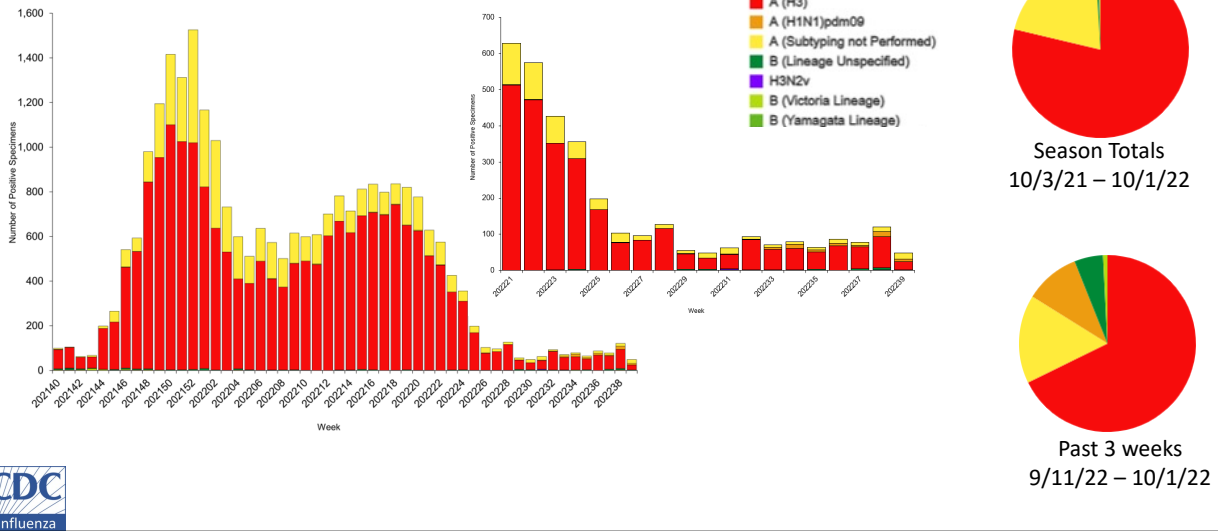


2

2

Virologic Surveillance – public health laboratories

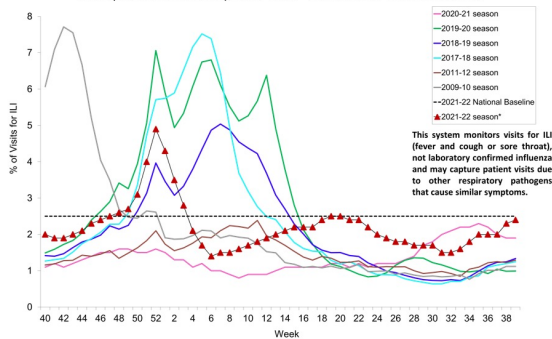
Influenza Positive Tests Reported to CDC by U.S. Public Health Laboratories, National Summary, October 3, 2021 – October 1, 2022



3

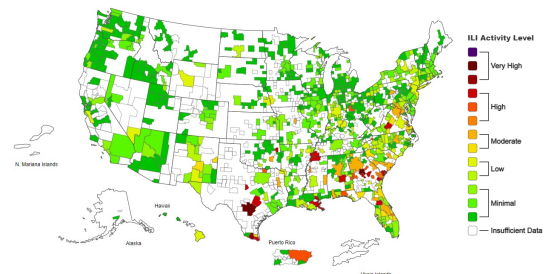
Outpatient Respiratory Illness

Percentage of Outpatient Visits for Respiratory Illness Reported By The U.S. Outpatient Influenza-like Illness Surveillance Network (ILINet), Weekly National Summary, 2021-2022* and Selected Previous Seasons

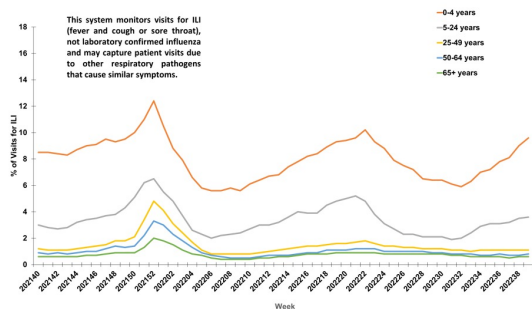


Being driven by:

- Increased circulation of:
 - Influenza
 - RSV
 - Rhinovirus/Enterovirus
- Continued circulation of Sars-CoV-2



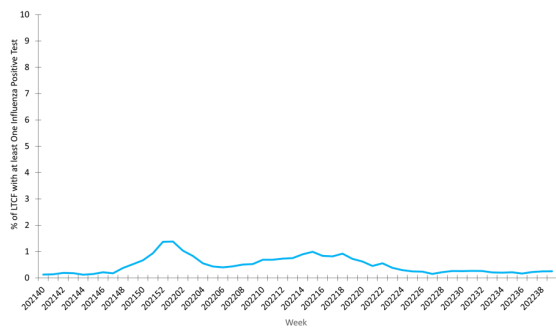
Percentage of Outpatient Visits for Respiratory Illness by Age Group Reported by the U.S. Outpatient Influenza-like Illness Surveillance Network (ILINet), Weekly National Summary, October 3, 2021-October 1, 2022*



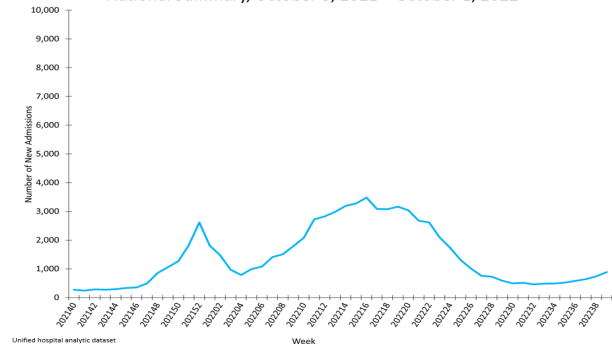
4

Long-term Care Facilities and Hospitals

Percent of Long-term Care Facilities (LTCF) with at Least One Confirmed Influenza Positive Test among Residents, Reported to CDC National Healthcare Safety Network (NHSN), National Summary, October 4, 2021 – October 2, 2022



New Influenza Hospital Admissions Reported to HHS Protect, National Summary, October 3, 2021 – October 1, 2022

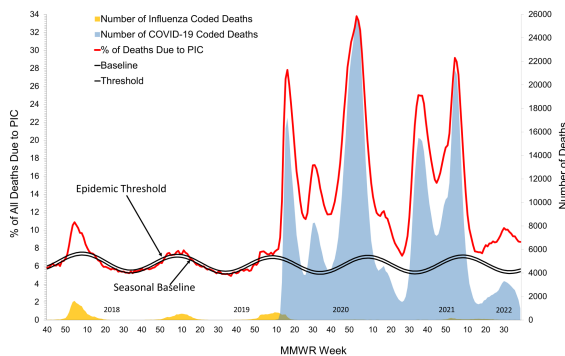


5

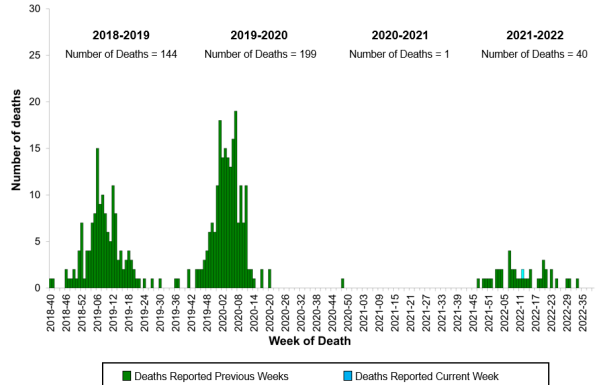
5

Mortality

Pneumonia, Influenza, and COVID-19 Mortality from the National Center for Health Statistics Mortality Surveillance System Data as of October 6, 2022



Influenza-Associated Pediatric Deaths by Week of Death, 2018-2019 season to 2021-2022 season



6

6

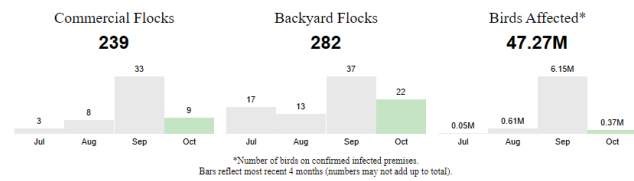
Novel Influenza A viruses

- 9 novel influenza A viruses in 2022
 - 8 variant viruses(5 H1N2v, 3 H3N2v)
 - 1 H5N1
- Fair season has ended/winding down – good for variant cases
- Birds are migrating south – not good for H5N1 in poultry, backyard flocks and wild birds

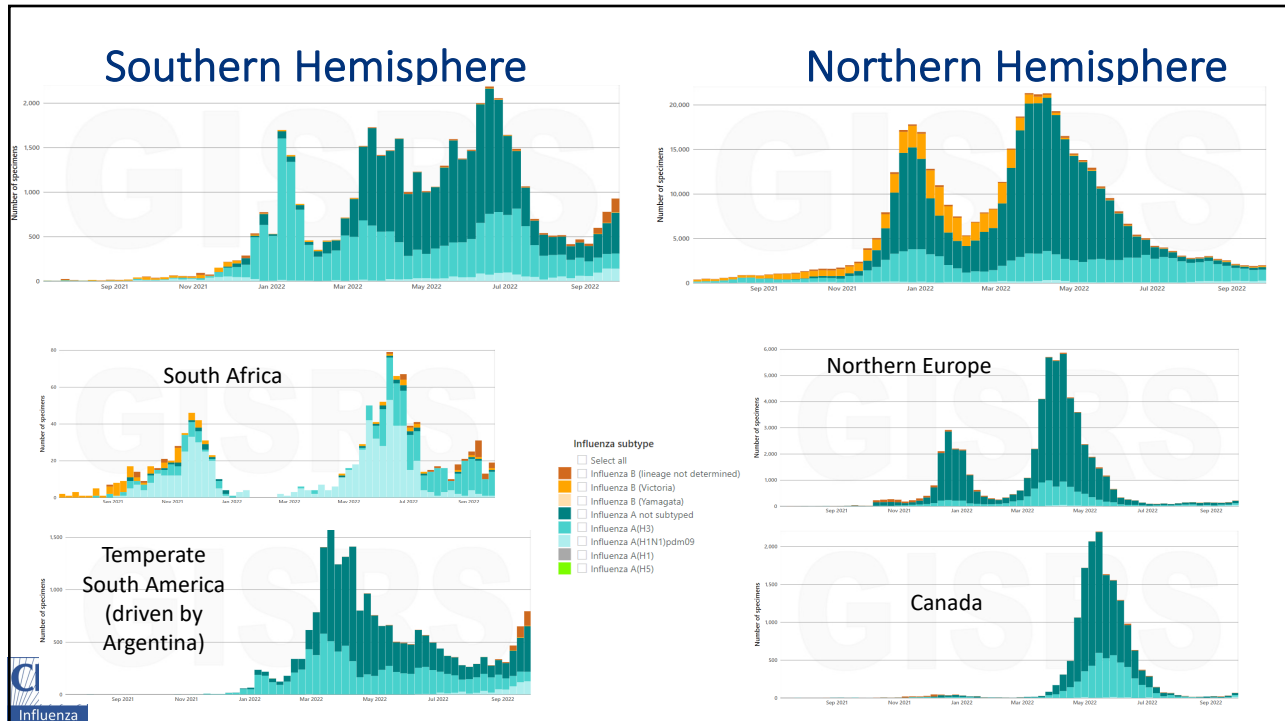


521 Confirmed Flocks
Birds tested and confirmed having HPAI

42 Affected States
States with at least one confirmed infected flock



7



8

2022-23 Influenza Season

- Officially (from surveillance perspective) started Sunday, October 2
- First full FluView of the season will be published Friday (10/14/22)
 - Virus characterization data (summer through present)
 - More Interpretation
 - Later in the season: FluSurvNet hospitalization data
- Activity in the U.S. is still low overall but increasing in parts of the country
- Still H3 predominant but a bit of B and H1
- It's a great time to get vaccinated!

