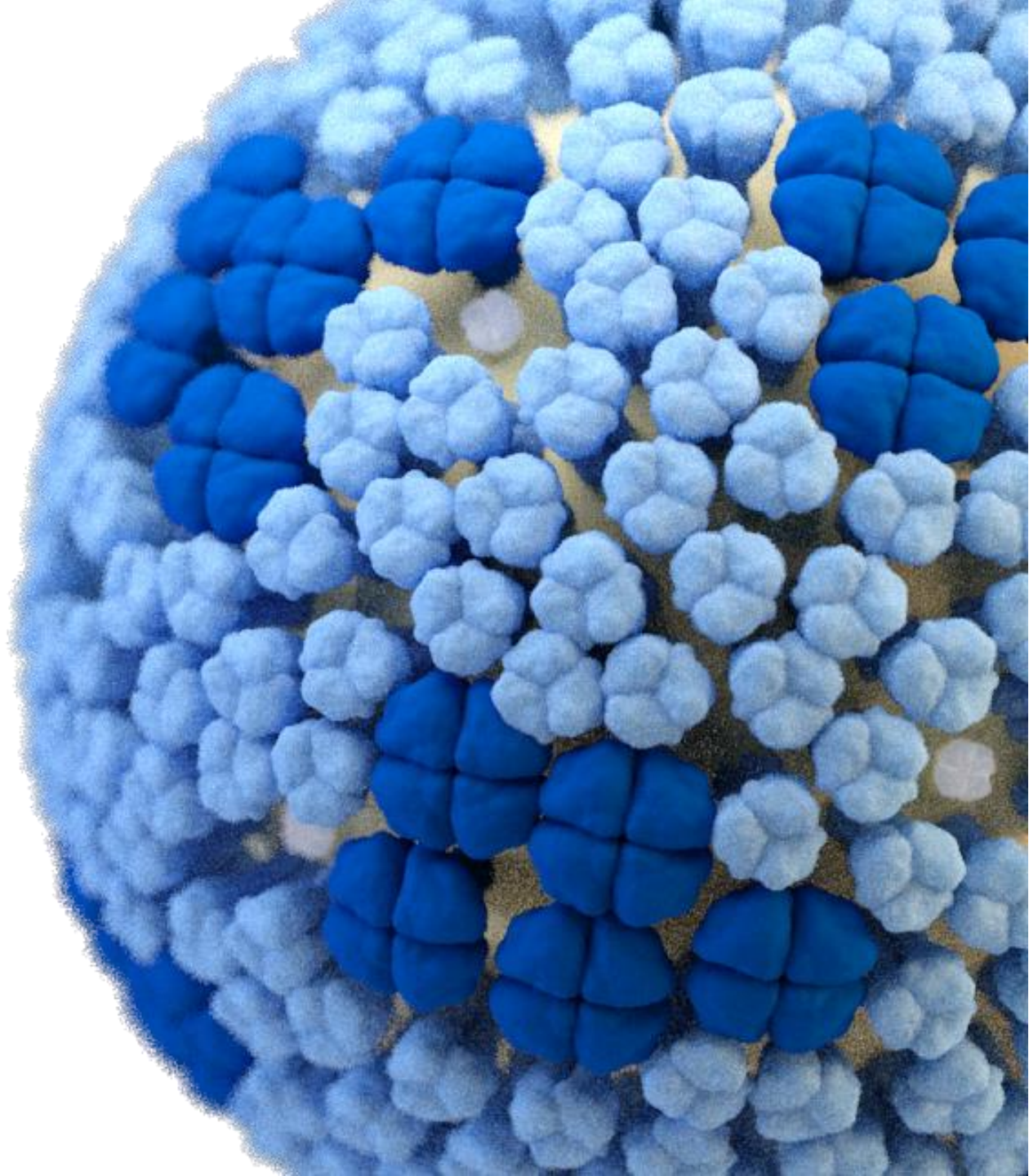


# Respiratory Virus Update: 2022-2023 Season

October 5, 2023

Katie Tastad, PhD, MPH  
Influenza Division, CDC

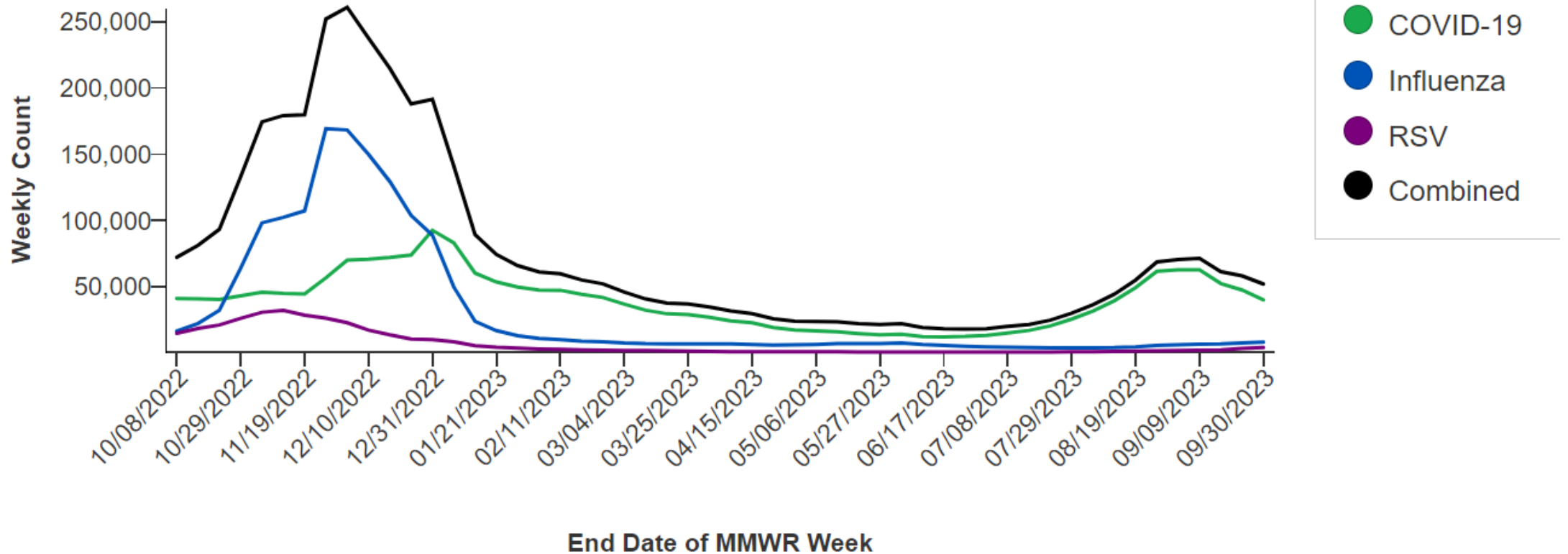


# National Syndromic Surveillance Program (NSSP)

## Age Group

All Ages ▾

National Emergency Department Visits for  
COVID-19, Influenza, and Respiratory  
Syncytial Virus



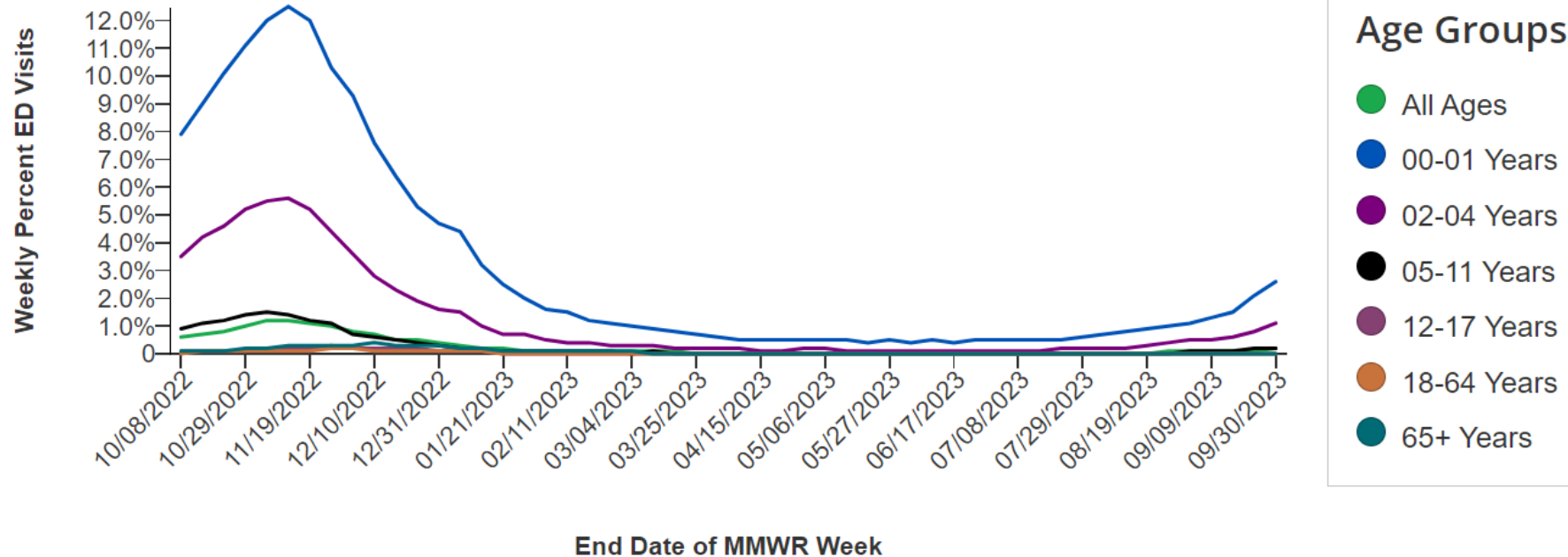
# NSSP – ED Visits for RSV by Age Group

## Weekly Emergency Department Visits by Age Group and Respiratory Illness, as a Percent of All Emergency Department Visits

Make a selection from the filters to change the visualization information.

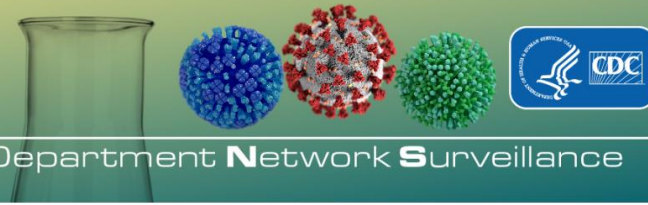
### Respiratory Illness

RSV



# RESP-LENS

Respiratory Virus Laboratory Emergency Department Network Surveillance

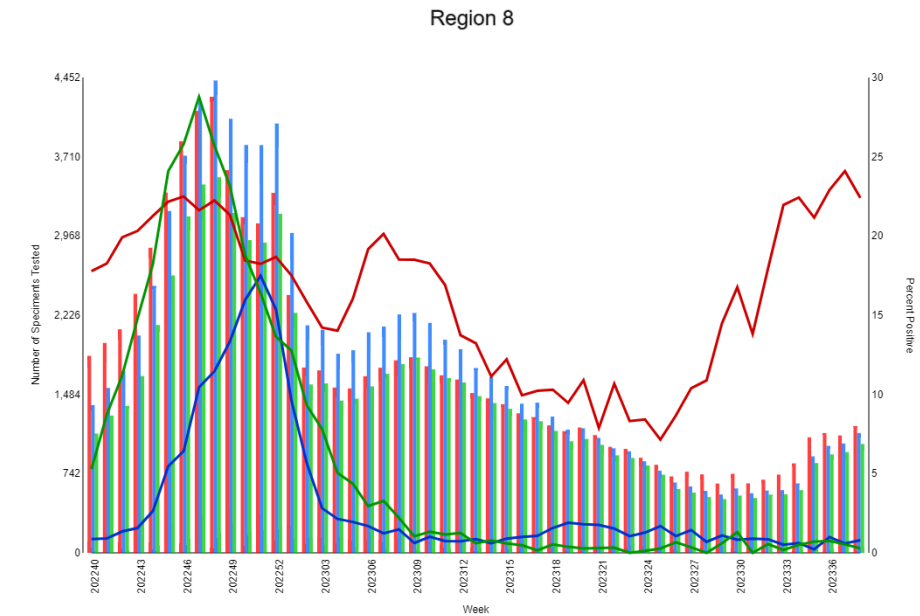
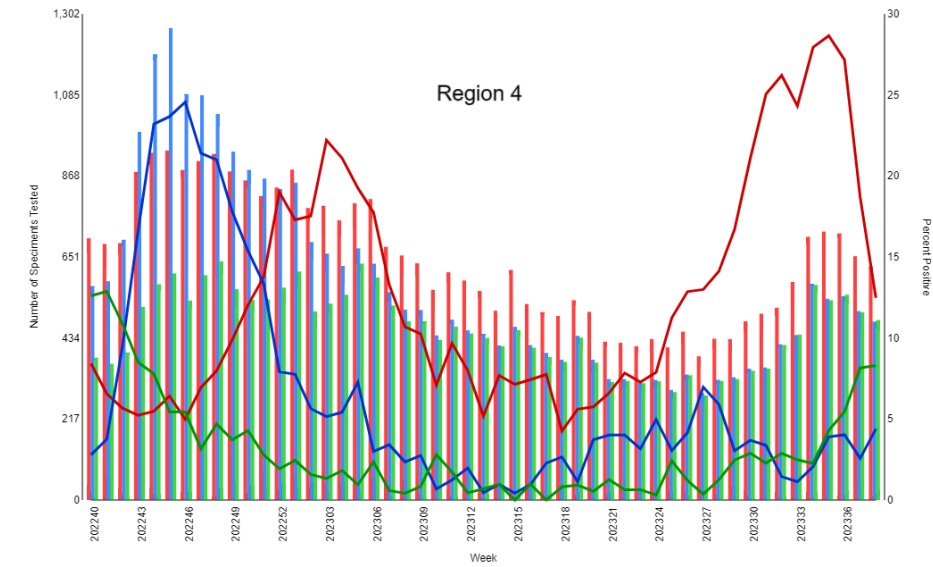
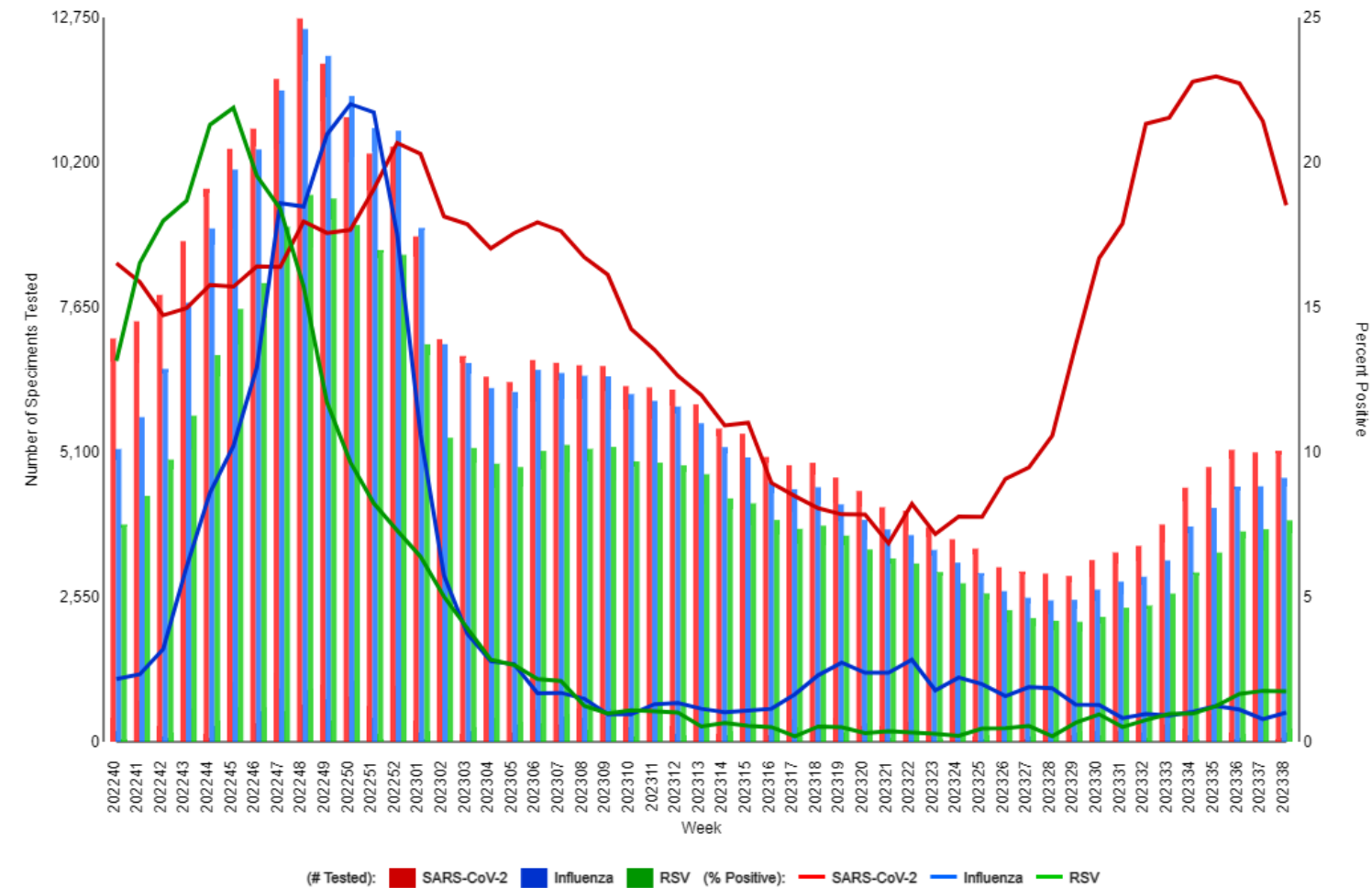


## Respiratory Virus Laboratory Emergency Department Network Surveillance (RESP-LENS)

Number of Specimens Tested and Percent Positive by Week



### National Level



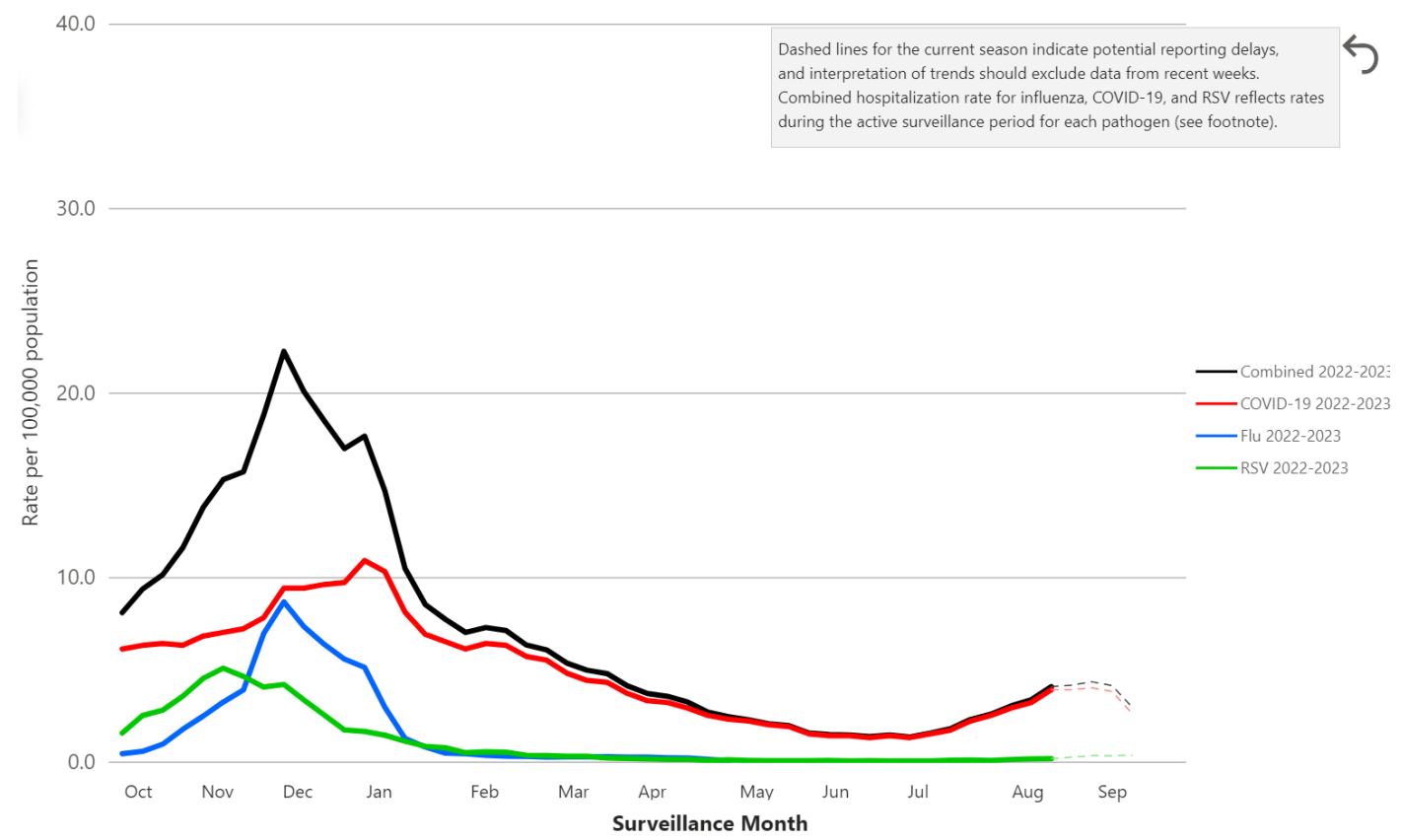


# RESP-NET

## Respiratory Virus Hospitalization Surveillance Network

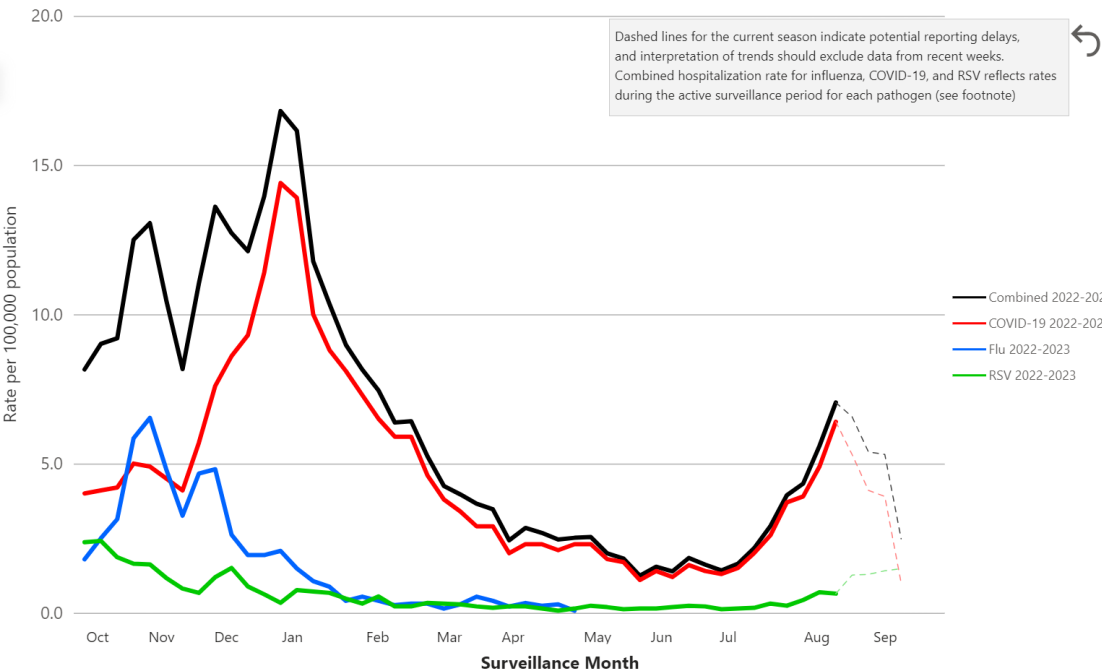


Weekly Rates of Respiratory Virus-Associated Hospitalizations by Season



Data last updated: September 28, 2023. | Accessibility: Right click on the graph area to display options such as show data as table and copy visual.

Weekly Rates of Respiratory Virus-Associated Hospitalizations by State: Georgia



Data last updated: September 28, 2023. | Accessibility: Right click on the graph area to display options such as show data as table and copy visual.

# Resources

- [Respiratory Virus Laboratory Emergency Department Network Surveillance \(RESP-LENS\)](#)

This interactive dashboard tracks emergency department visits for laboratory-confirmed severe acute respiratory coronavirus type 2 (SARS-CoV-2), influenza (flu), and respiratory syncytial virus (RSV).

- [Respiratory Virus Hospitalization Surveillance Network \(RESP-NET\)](#)

This site comprises three platforms that conduct population-based surveillance for laboratory-confirmed hospitalizations associated with COVID-19, Influenza, and Respiratory Syncytial Virus (RSV) among children and adults.

- [National Emergency Department Visits for COVID-19, Influenza, and Respiratory Syncytial Virus](#)

This site provides a combined view of emergency department visit data for multiple respiratory conditions as tracked by the National Syndromic Surveillance Program (NSSP).

# Questions?

Katie Tastad (qwu5@cdc.gov)

For more information, contact CDC  
1-800-CDC-INFO (232-4636)  
TTY: 1-888-232-6348 [www.cdc.gov](http://www.cdc.gov)

The findings and conclusions in this report are those of the authors and do not necessarily represent the official position of the Centers for Disease Control and Prevention.

