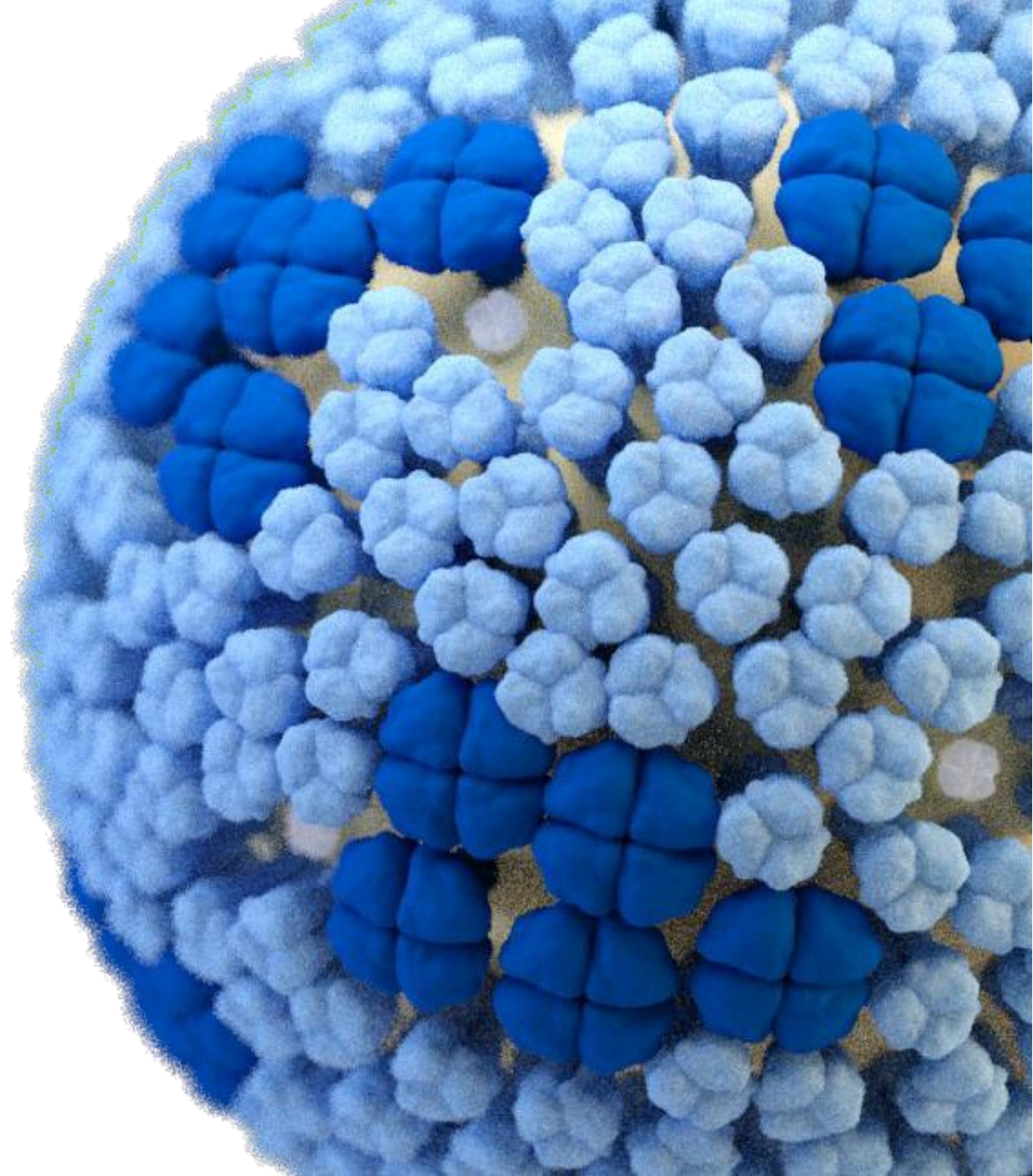


INFLUENZA ACTIVITY UPDATE: 2022-2023 Influenza Season

July 20, 2023

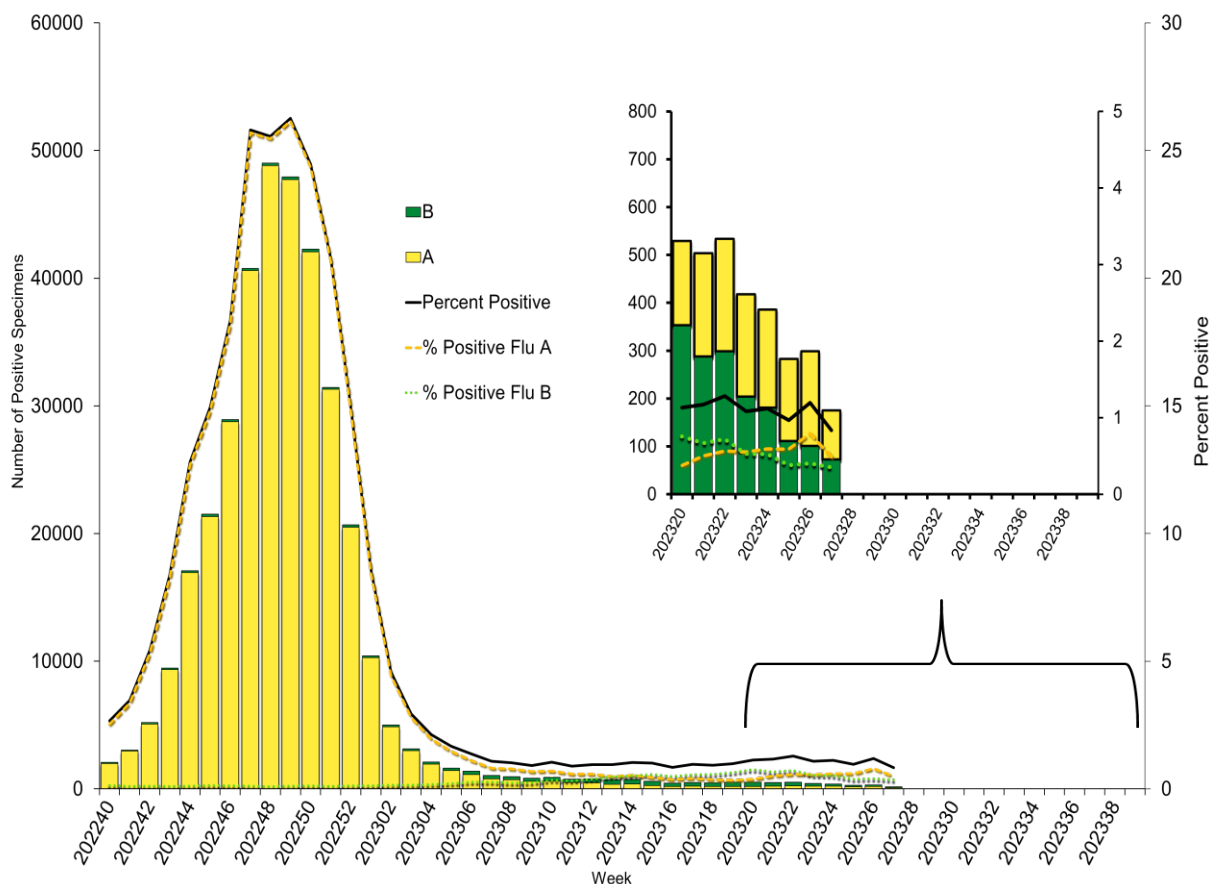
Katie Tastad, MPH

Influenza Division, CDC

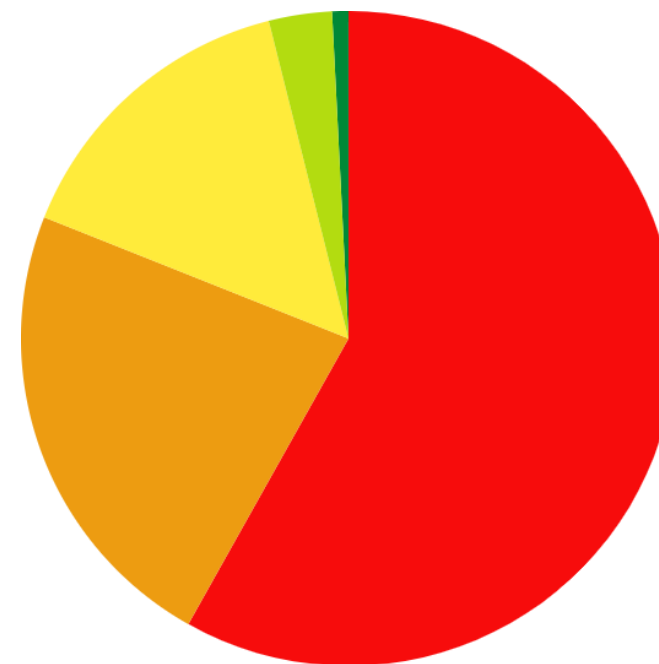


Virologic Surveillance

Influenza Positive Tests Reported to CDC by U.S. Clinical Laboratories,
National Summary, October 2, 2022 – July 8, 2023



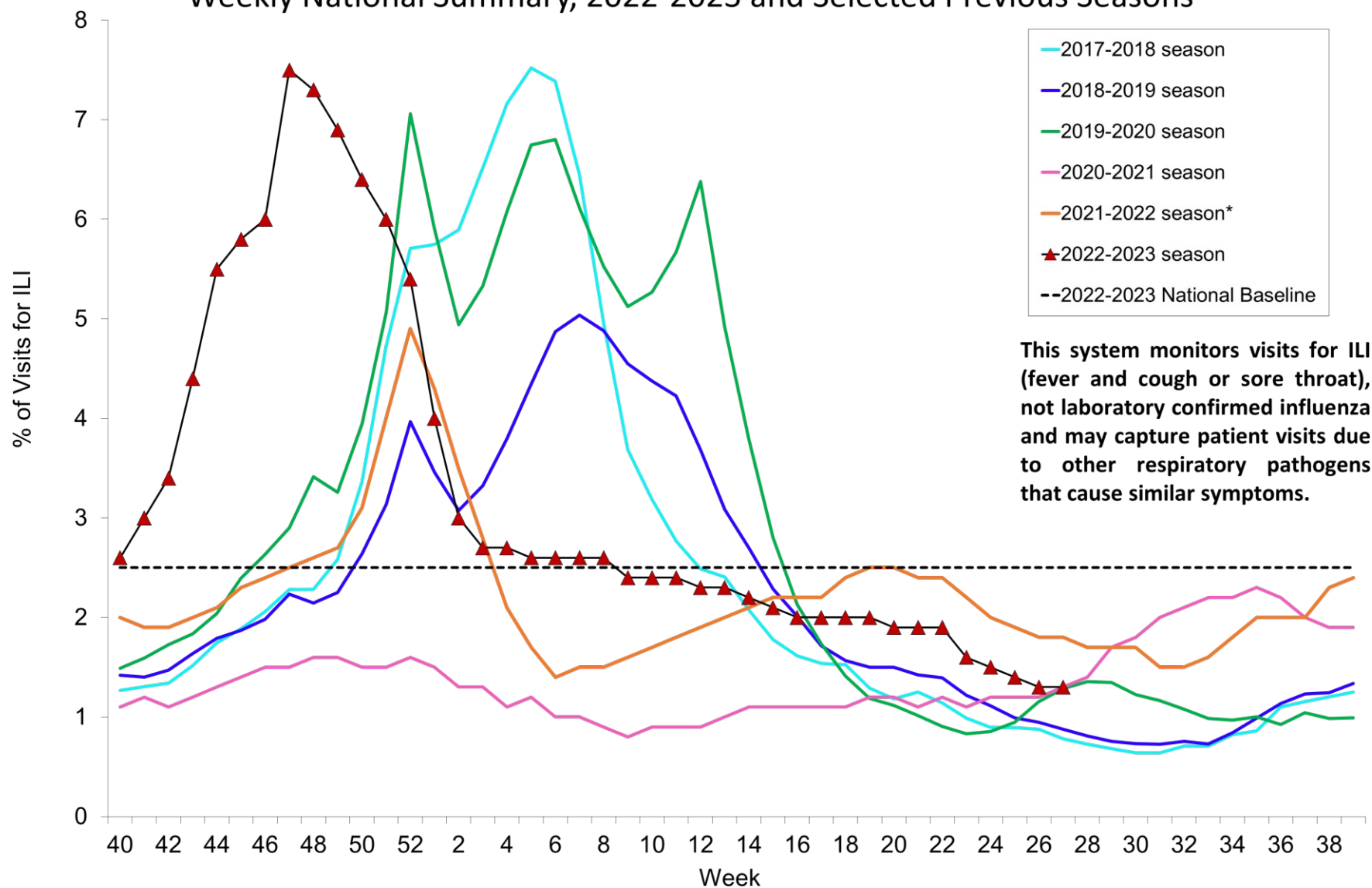
Influenza Positive Tests Reported to CDC by U.S.
Public Health Laboratories,
National Summary, October 2, 2022 – July 8, 2023



Number of Influenza Positive Tests

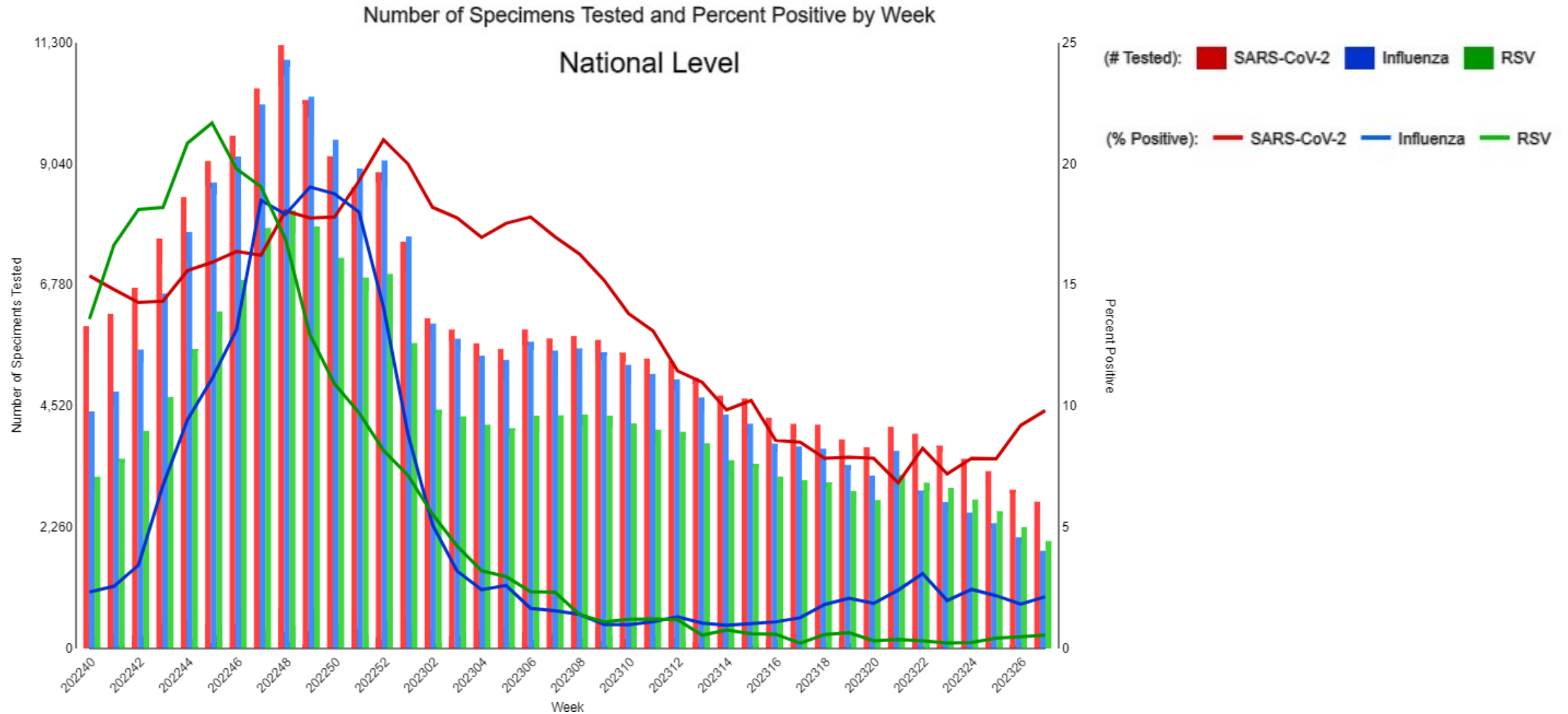
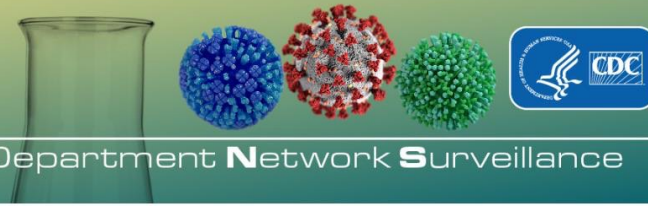
- A (H1) - 0
- A (Unable to Subtype) - 0
- A (H3) - 17612
- A (H1N1)pdm09 - 6937
- A (Subtyping not Performed) - 4560
- B (Lineage Unspecified) - 242
- H3N2v - 1
- B (Victoria Lineage) - 943

Percentage of Outpatient Visits for Respiratory Illness Reported By The U.S. Outpatient Influenza-like Illness Surveillance Network (ILINet), Weekly National Summary, 2022-2023 and Selected Previous Seasons



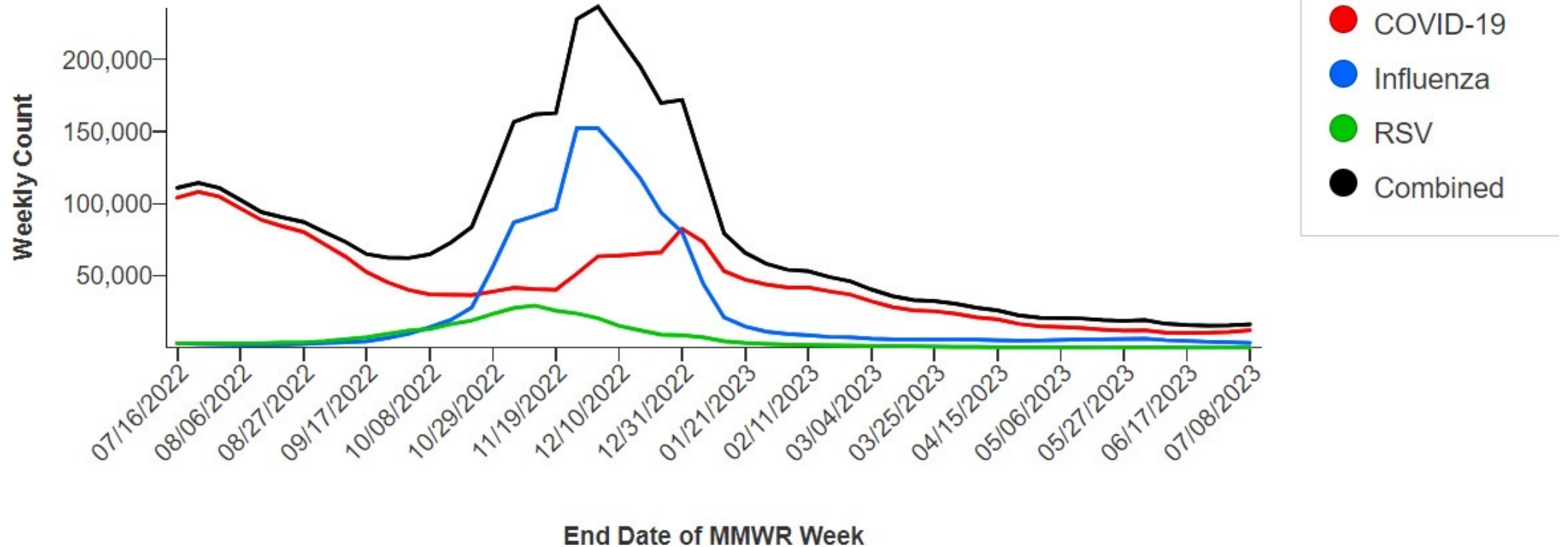
RESP-LENS

Respiratory Virus Laboratory Emergency Department Network Surveillance



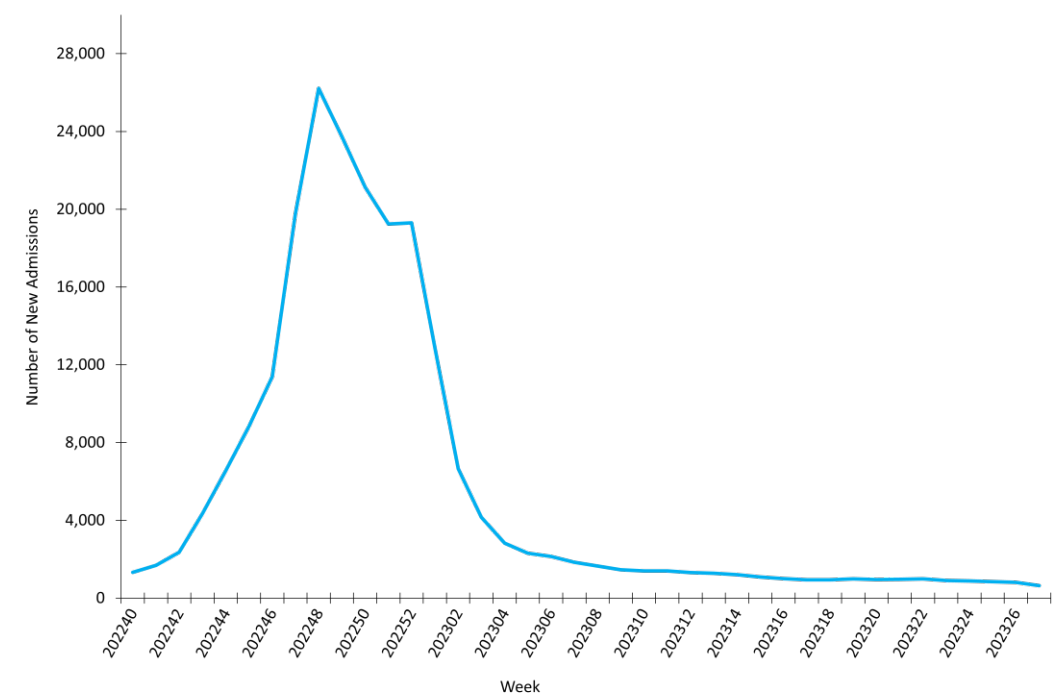
Emergency Departments – National Syndromic Surveillance Program

National Emergency Department Visits for
COVID-19, Influenza, and Respiratory
Syncytial Virus



Hospitalizations

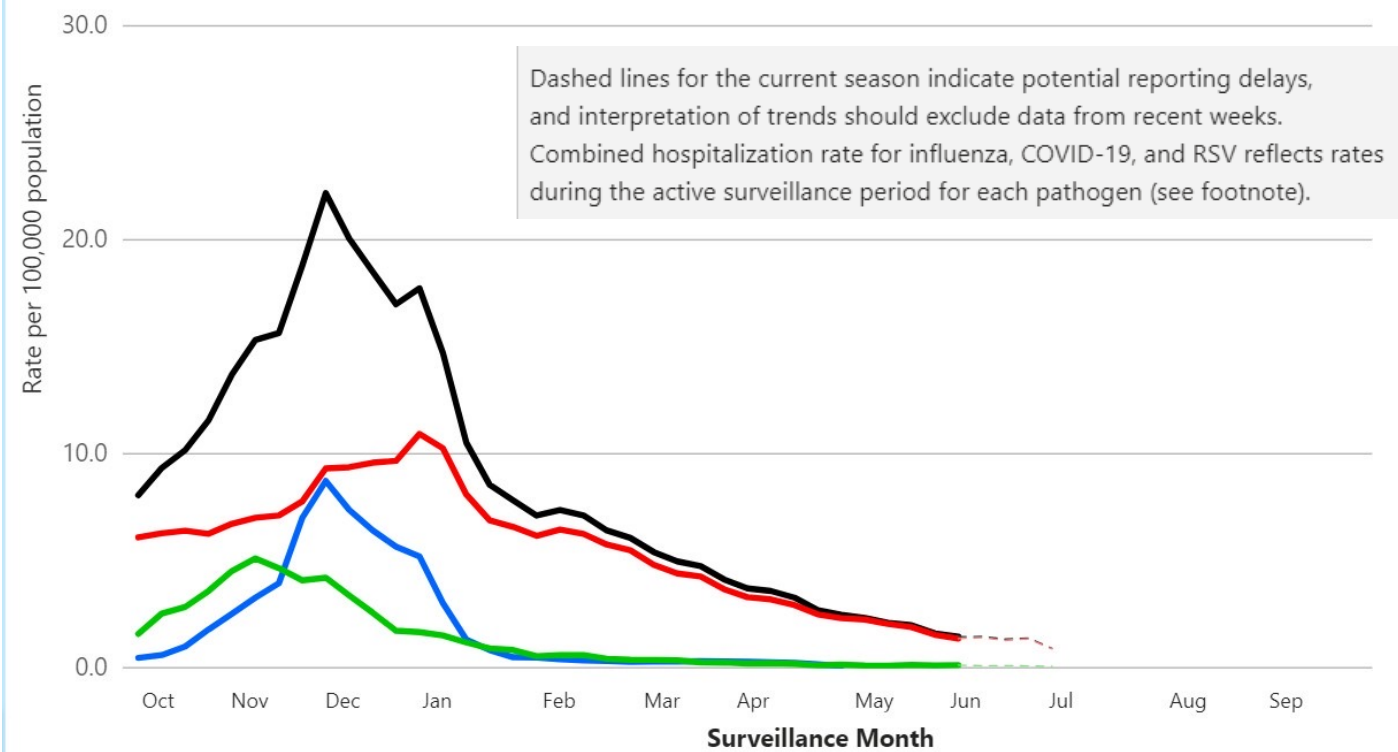
New Influenza Hospital Admissions Reported to HHS Protect, October 2, 2022 – July 8, 2023



Unified hospital analytic dataset



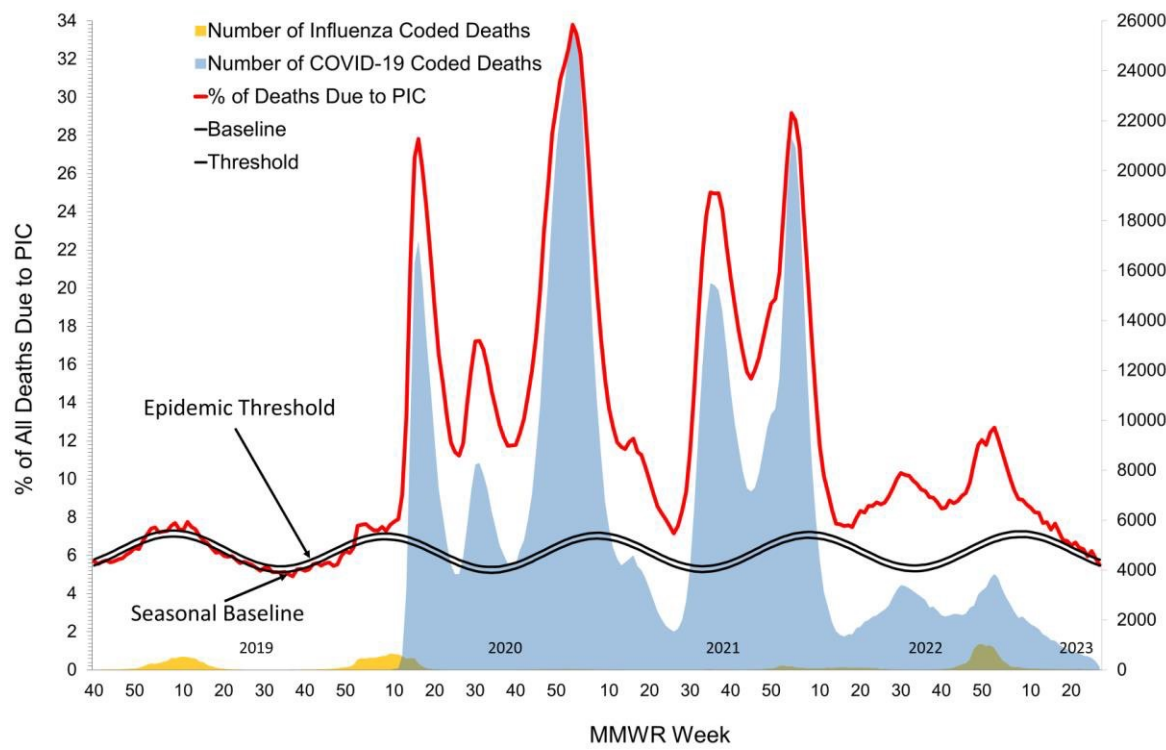
Weekly Rates of Respiratory Virus-Associated Hospitalizations



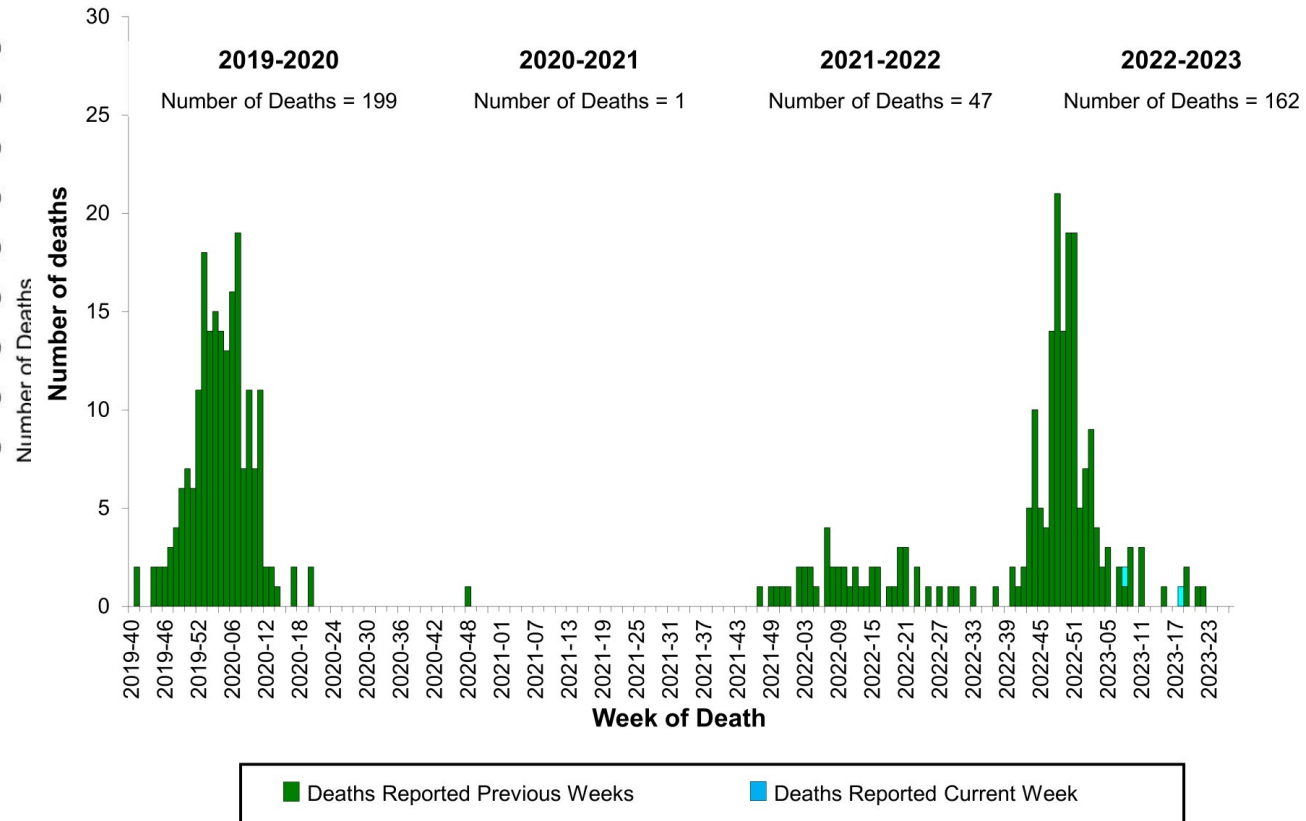
<https://www.cdc.gov/surveillance/resp-net/dashboard.html>

Mortality

Pneumonia, Influenza, and COVID-19 Mortality from the National Center for Health Statistics Mortality Surveillance System
Data as of July 13, 2023



Influenza-Associated Pediatric Deaths by Week of Death, 2019-2020 season to 2022-2023 season



Summary

- Influenza activity is low, typical at this time of year.
- According to preliminary estimates for 2022-2023 season, in the U.S. influenza caused:
 - At least 27 million symptomatic illnesses
 - At least 12 million medical visits
 - At least 300,000 hospitalizations
 - At least 19,000 deaths
- CDC is providing 3 new resources to display influenza, RSV, and COVID-19 data together.

Resources

- [U.S. Influenza Surveillance](#)

The Influenza Division at CDC collects, compiles, and analyzes information on influenza viruses and disease activity year-round in the United States.

- [Respiratory Virus Laboratory Emergency Department Network Surveillance \(RESP-LENS\)](#)

This interactive dashboard tracks emergency department visits for laboratory-confirmed severe acute [respiratory coronavirus](#) type 2 (SARS-CoV-2), influenza (flu), and respiratory syncytial virus (RSV).

- [Respiratory Virus Hospitalization Surveillance Network \(RESP-NET\)](#)

This site comprises three platforms that conduct population-based surveillance for laboratory-confirmed hospitalizations associated with COVID-19, Influenza, and Respiratory Syncytial Virus (RSV) among children and adults.

- [National Emergency Department Visits for COVID-19, Influenza, and Respiratory Syncytial Virus](#)

This site provides a combined view of emergency department visit data for multiple respiratory conditions as tracked by the National Syndromic Surveillance Program (NSSP).

Questions?

Katie Tastad (qwu5@cdc.gov)

For more information, contact CDC
1-800-CDC-INFO (232-4636)
TTY: 1-888-232-6348 www.cdc.gov

The findings and conclusions in this report are those of the authors and do not necessarily represent the official position of the Centers for Disease Control and Prevention.

