

# 2023 Seasonal Flu Coverage Manufacturer Update

NAIIS Summit Partners Call

11/30/2023

Julian Ritchey  
Head, Public Affairs &  
Patient Advocacy  
Sanofi Vaccines, US



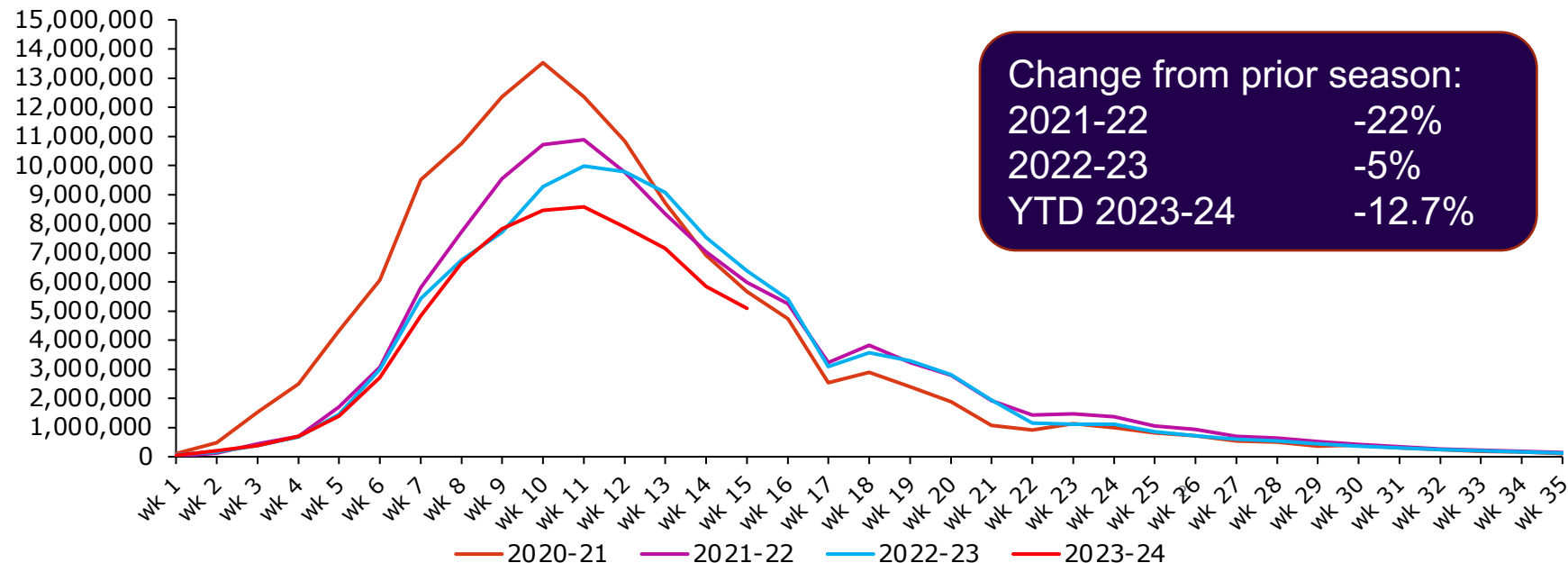
Amy Walker  
Director, US Policy & Advocacy,  
CSL Seqirus



# Historical Medical/Retail Claims by Week

Retail Week Ending November 10, 2023<sup>1</sup>

Medical Week Ending November 11, 2023<sup>1</sup>

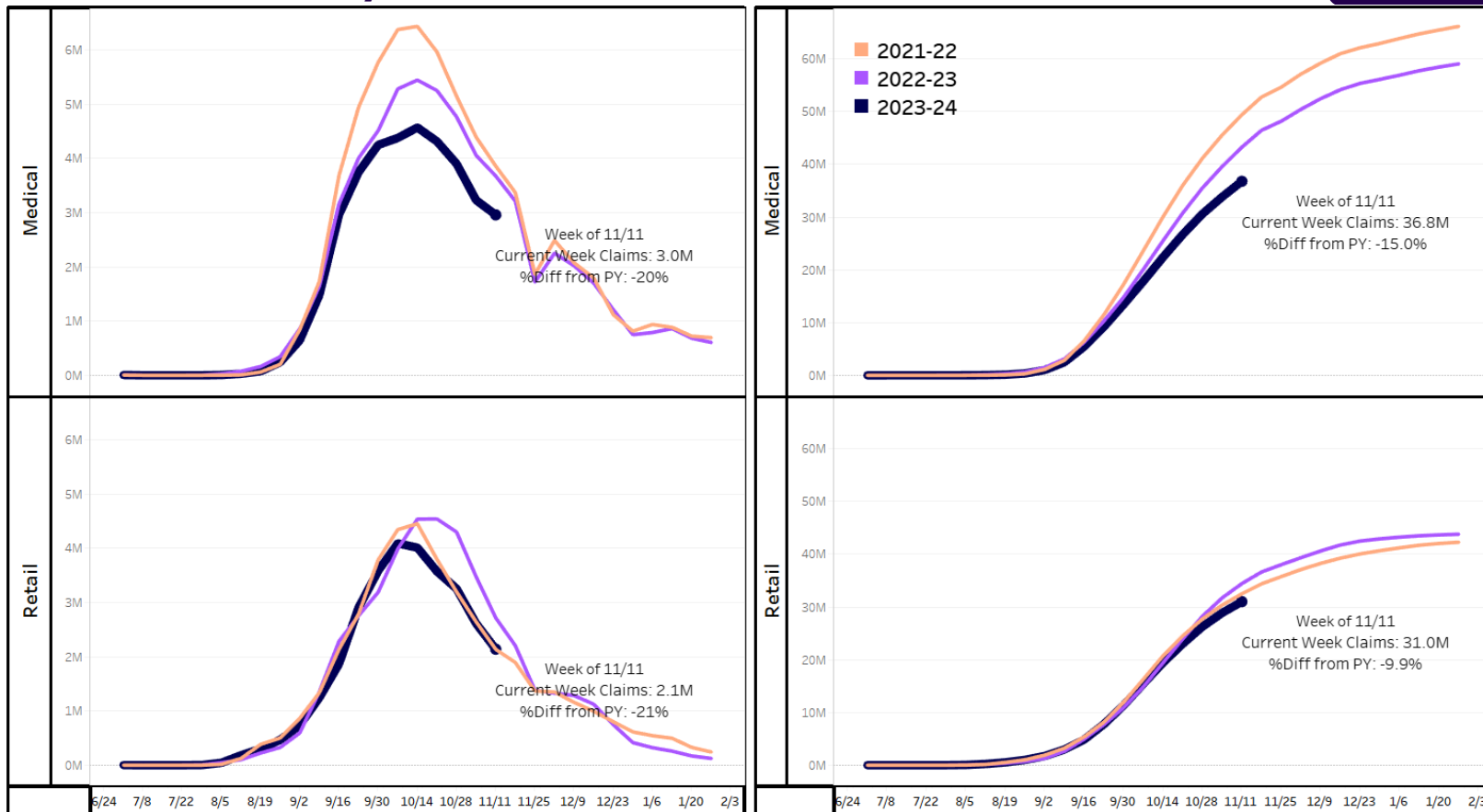


- Flu seasons run for 35 weeks Aug to Mar
- Week 1 represents: Aug 08, 2020; Aug 07, 2021; Aug 06, 2022; Aug 05, 2023

<sup>1</sup> Data only reflects active Flu season, Season to Date (August – March); Medical claims are a week behind Retail claims therefore Retail claim week ending dates are adjusted to be consistent with Medical claims

# With Medical down 15% YOY and Retail down 10%, overall flu immunized population shrinks each year

Claims as of week 11/11

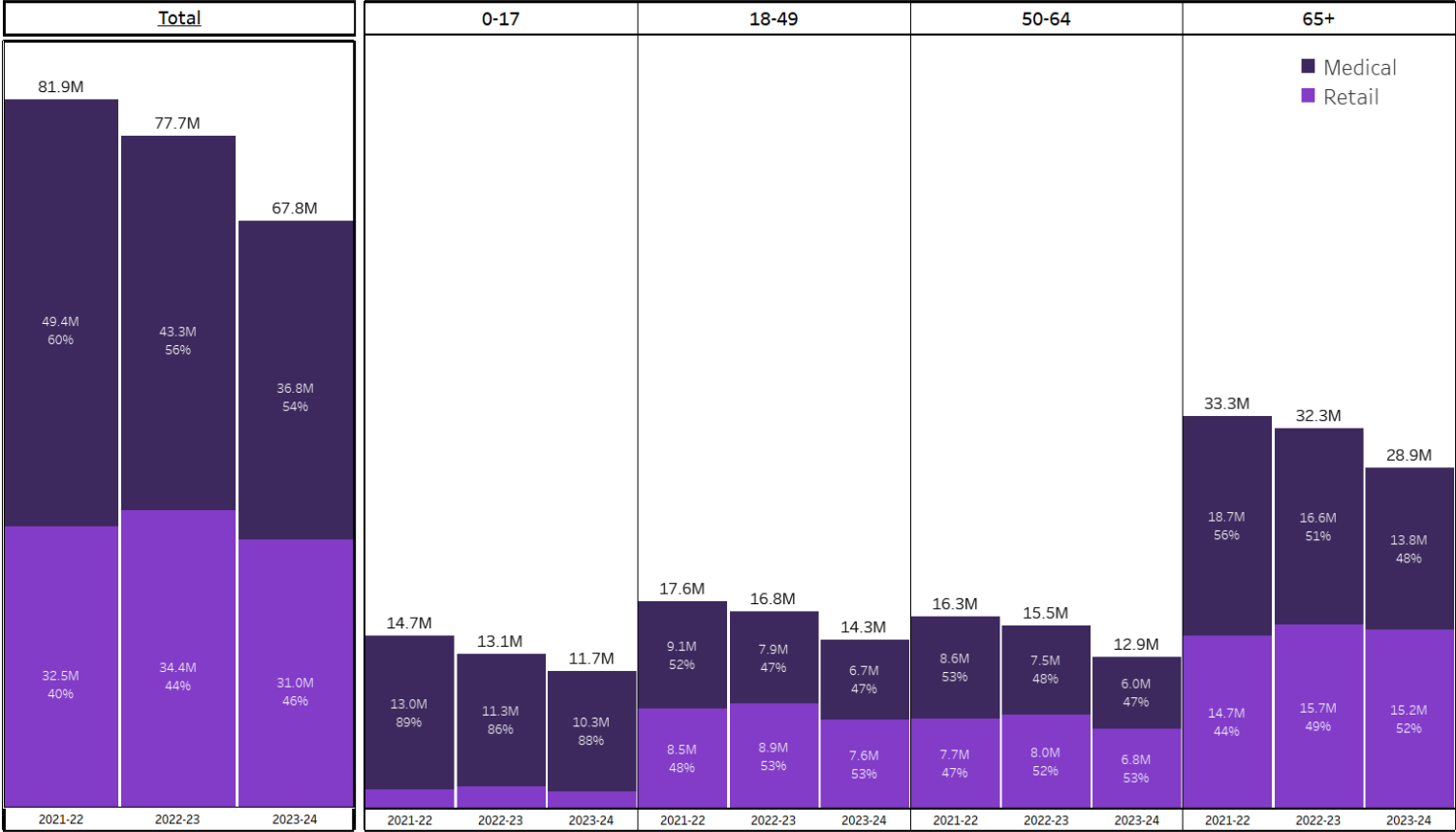


## IQVIA NATIONAL CLAIMS DATA

- COVERAGE FOR MEDICAL IS 65%. CLAIMS ARE EXTRAPOLATED TO CAPTURE 100% OF THE MARKET
- NOT COVERED SEGMENTS – KAISER, VA, CDC, FQHC, LTC, CASH PAYMENTS, MEDICARE PART A – HOSPITALS, NON-AMA AFFILIATED HCP IMMUNIZATIONS

# 18-64 age segments witnessing YOY lag greater than the overall market immunization

Claims as of week 11/11



- **Vaccination lagging across age cohorts YoY:**
  - Ages 0-17 (-10.6%)
  - Ages 18-49 (-14.9%)
  - Ages 50-64 (-16.8%)
  - Ages 65+ (-10.5%)
- With 3% population CAGR in 65+ and decreasing immunization YOY results in larger population receiving no protection from FLU



**IQVIA NATIONAL CLAIMS DATA**  
• COVERAGE FOR MEDICAL IS 65%. CLAIMS ARE EXTRAPOLATED TO CAPTURE 100% OF THE MARKET  
• NOT COVERED SEGMENTS – KAISER, VA, CDC ,FQHC, LTC, CASH PAYMENTS, MEDICARE PART A – HOSPITALS, NON-AMA AFFILIATED HCP IMMUNIZATIONS

# **Influenza immunization trends are heading the wrong way**

- Overall rates are significantly down...again
- Retail and Medical administration is down
- Medical in particular is further down
- Those not getting immunized in Medical are not going to Retail
- Rates are down in all age groups
- In 65+, rates are down even further considering Baby Boomers aging in

**These trends need stakeholder action to avoid further decline**

**In the meantime, there is still time to immunize patients**

## **All immunization stakeholders – *especially providers* – need to continue education and administration to extend the immunization season**

- **Reach out to patients** who have not received influenza this year. Remind them why getting flu vaccine this year is important for their health with a strong recommendation
- **Continue educating patients and offering flu vaccine** as long as flu is circulating
- **Use COVID-19 and RSV vaccinations** to co-administer influenza per the ACIP recommendation, or, if the patient declines, schedule a visit in the very near future for their influenza immunization and follow-up with them to ensure they are immunized
- **Use the many tools available** to help providers, staff, and patients on sites such as [CDC.gov](https://www.cdc.gov) and [Immunize.org](https://www.immunize.org)

***It is not too late to immunize - and to be immunized.  
Keep offering the flu shot!***