

National Center for Immunization and Respiratory Diseases



NAIIS Immunization Gateway Update

Mark Winarsky, MPA

IZ Gateway Project Lead

Informatics and Data Analytics Branch

August 16, 2024

CDC's Vision for Immunization Information Systems

CDC | NCIRD | Immunization Services Division

Content Cleared Previously

CDC's Vision for Immunization Information Systems

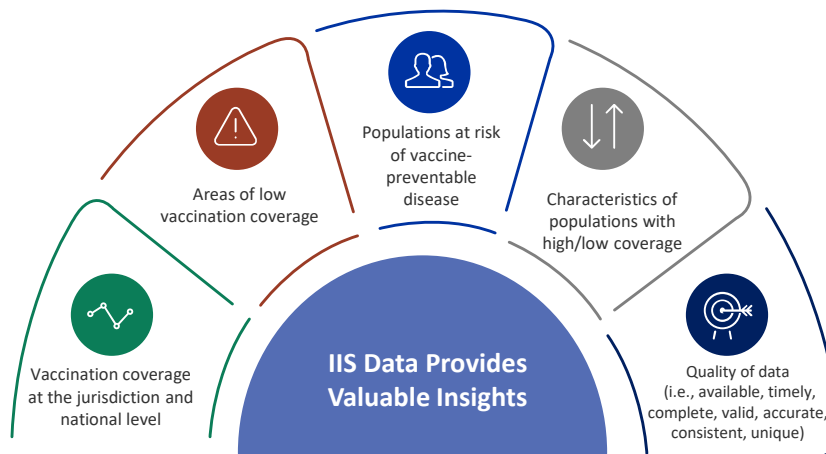
Immunization Information Systems (IISs) support the **standardized capture and exchange of high-quality, individual-level immunization data** for all doses of Advisory Committee on Immunization Practices (ACIP) recommended vaccines.

These data are linked across jurisdictions, providers, partners, and other individual-level data sources to **inform public health actions**.



Immunization Data for Public Health

Complete data at the IIS and national levels enables data-driven insights and decisions to advance public health action and emergency preparedness



IIS Data Quality

CDC | NCIRD | Immunization Services Division

Immunization Data Reporting at the National Level

DUAs and Data Reporting

Pre-COVID-19

Jurisdictions use IISs to manage the Vaccines for Children (VFC) program and understand their jurisdiction's vaccine coverage.

- **13** jurisdictions signed Data Use Agreements (DUAs)
- Routine data reported quarterly and flu data reported monthly
- Data use was limited

COVID-19 Response

Federally-provided vaccines, provider agreements, and a COVID-19-specific DUA superseded state reporting and data sharing laws to allow reporting to CDC.

- **64** jurisdictions with DUAs
- COVID-19 data reported daily, then weekly

Present

New DUA allows reporting of routine vaccination data across the lifespan.

- **54** jurisdictions with DUAs
- Line-level routine data reported quarterly
- Aggregate RSV, flu, COVID-19 data reported monthly

Latest Data Reporting

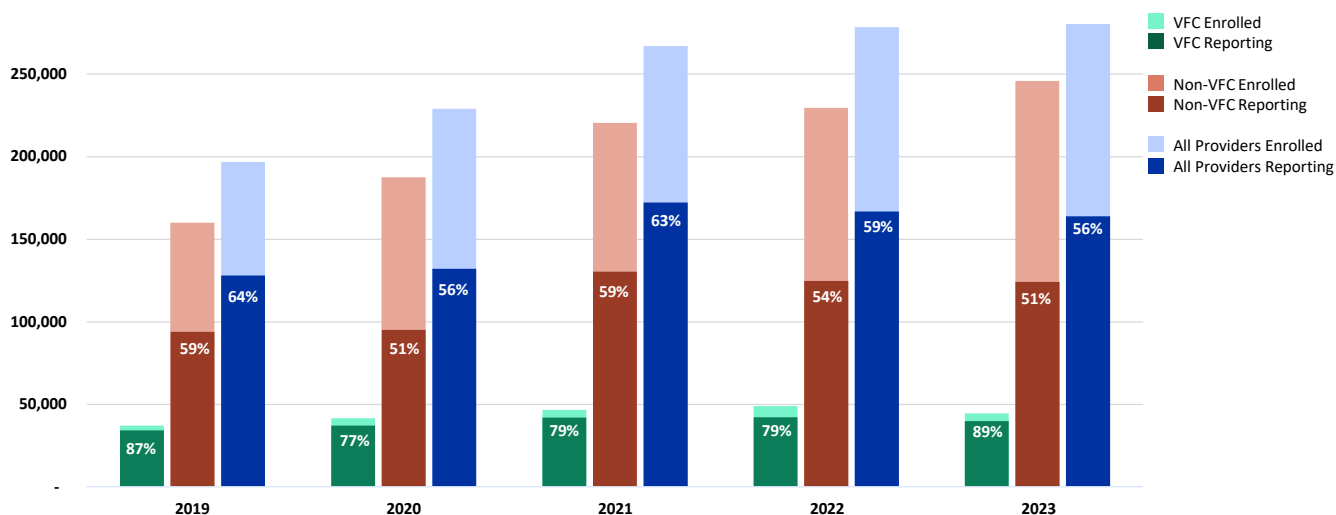
April Aggregate Jurisdiction Data Submissions submitted in May 2024

Q2 2024 Routine Data Submission submitted in July 2024

| Flu Data | RSV Data | COVID-19 All Data | COVID-19 Bridge Data | Record Level Routine Data |
|--|----------|-------------------|----------------------|---|
| 50 <small>*June data, submitted in July</small> | 46 | 50 | 50 | 43 16 PPRL <small>(*PPRL data is as of Q1 2024)</small> |

IIS Annual Report: Provider Enrollment and Participation Trends

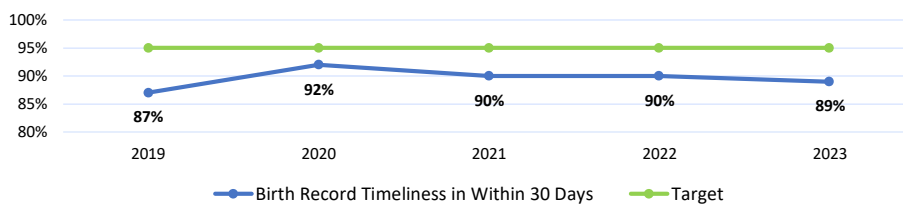
Provider Enrollment and Participation Site Growth Among
64 States and U.S. Cities, 2019 - 2023



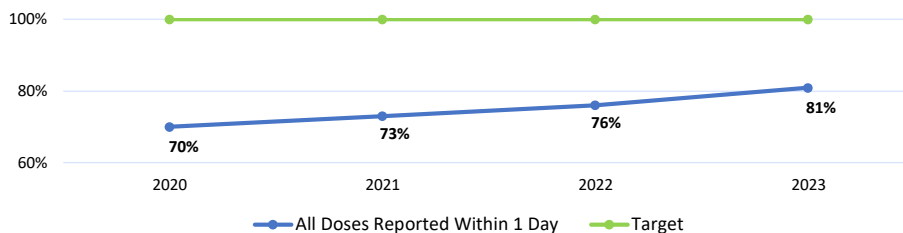
IIS Annual Report: Timeliness for Birth Records and Vaccination Reporting Trends



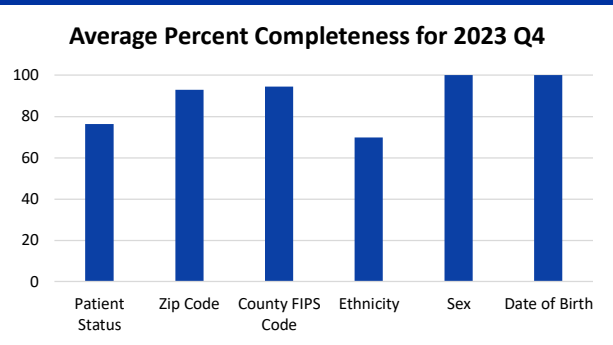
Timely: Records are Created in the IIS Within 30 Days of Birth



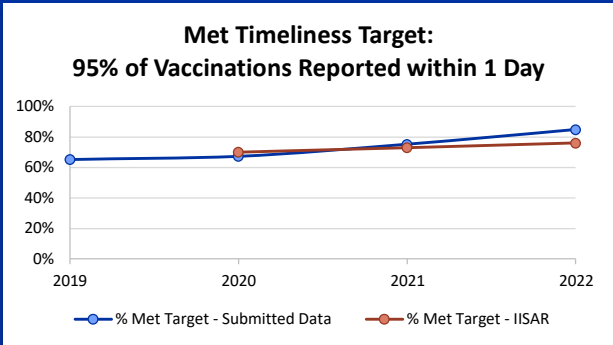
Timely: Vaccinations Recorded Within 1 Day of Vaccination



Routine Vaccination Data Quality: 2023 Q4 Summary



Average percent completeness for selected data elements from an analysis of routine data submissions by 38 jurisdictions in Q4 of 2023.



Timeliness of vaccination records from an analysis of routine data submissions by 38 jurisdictions in Q4 of 2023. These results were compared against IIS Annual Report metrics based on jurisdiction submissions for 2023.

9

IZ Gateway Overview

CDC | NCIRD | Immunization Services Division

The Immunization (IZ) Gateway

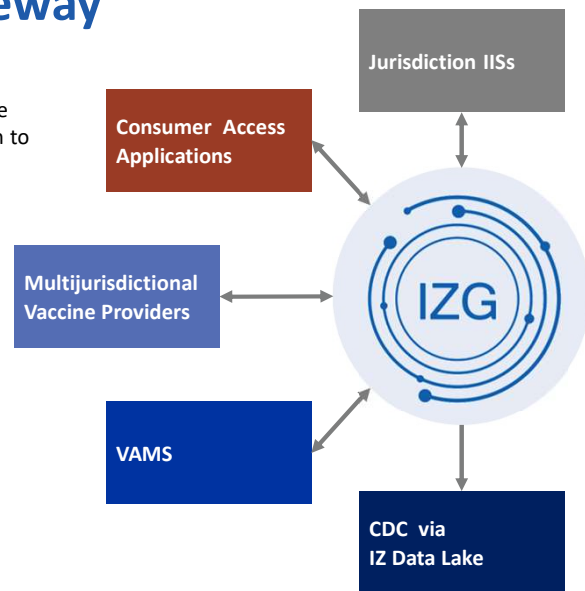
The IZ Gateway is a policy framework and cloud-based message routing system that facilitates data exchange among IISs, vaccine providers, direct-to-consumer applications, and data submission to CDC.



Message routing technology enables uniform application of **data quality assurance, messaging, and security industry standards** and best practices for all participants.

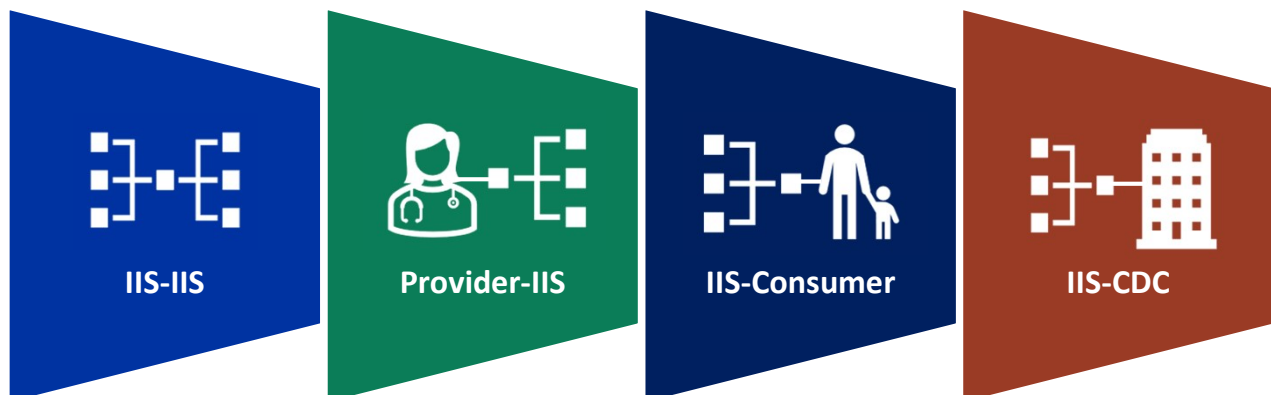


Policy framework ensures compliance with each **jurisdiction's data sharing laws and policies**.



12

IZ Gateway Use Cases



Provider-IIS

The Provider-IIS Use Case:

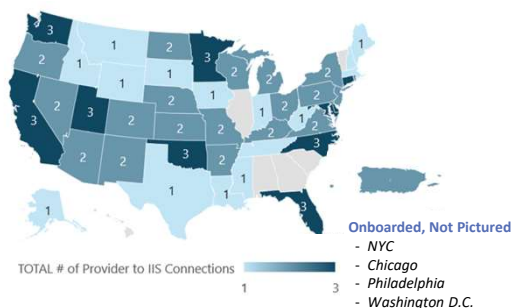
- Enables multi-jurisdictional providers to report and query IIS immunization data across states with a single connection point.
- Addresses the urgent need to support the delivery of clinical care to veterans and refugees by facilitating vaccination data flow among Veterans Health Administration (VHA) providers and Electronic Disease Notification System (EDN)



Exchange Metrics

8 providers with **6,948** facilities
in **51** jurisdictions

Provider-to-IIS Connections



Impact

Increased data exchange for veterans and refugees:

- 50 jurisdictions connect to VHA
- 23 jurisdictions connect to EDN

IIS-IIS

The IIS-IIS Use Case:

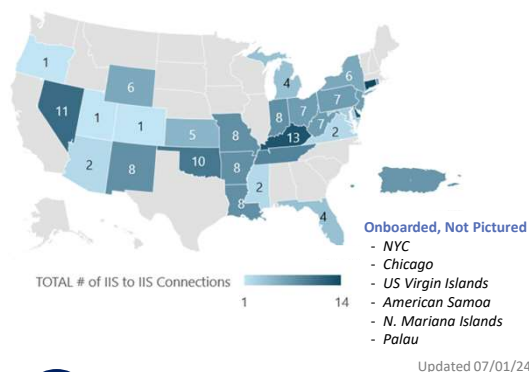
- Enables cross-jurisdictional exchange of immunization data across IIS.
- Helps complete vaccination records for their residents so the Immunization Program and providers in their states can make informed decisions.
- Improves the IIS's ability to accurately assess vaccination coverage at the jurisdiction level.



Exchange Metrics

37 jurisdictions with **213** active
exchanges

IIS-to-IIS Connections



Impact

37 IIS have more complete records for
citizens vaccinated outside
their jurisdiction

IIS-Consumer



The IIS-Consumer Use Case:

- Provides patients with direct access to their immunization records through a consumer access portal or patient application that queries the IISs via the IZ Gateway.
 - Example: Consumers in Alaska, Idaho, New Jersey, Maine, Utah, and Wyoming have direct access to their immunization records through a consumer application called Docket®.



Exchange Metrics

1 platform exchanging with 6 jurisdictions



Impact

6 jurisdictions streamlined their citizens' access to their consolidated vaccination records

IIS-CDC



The IIS-CDC Use Case:

- Enables jurisdictions to automate vaccination data submission from IIS to CDC.
- Uses modern, cloud-based technology with continuous enhancements.
- Leverages established IZ Gateway integration, certificates, and encryption.
- Creates a single connection for data reporting to CDC that will be used for all future reporting needs.
- Supports jurisdictions with scalable manual and automated submission options.



Exchange Metrics

22 jurisdictions submit routine vaccination data



Impact

Offers jurisdictions the option to **automatically send their routine vaccination data to CDC** rather than using a manual submission process.

What is Next for IZ Gateway?

CDC | NCIRD | Immunization Services Division

What is next for the IZ Gateway?

CDC is looking forward to continue **improving immunization data exchange** across use cases to **enhance IIS and provider data completeness** through the IZ Gateway.



IIS-IIS

Increase data sharing among jurisdictions to improve data completeness and inform clinical decision making.

By September 2024, the IZ Gateway aims to onboard 22 new pairings for a total of 257 connections



Provider-IIS

Expand data exchange with multi-jurisdictional agencies, particularly for veterans and refugees.

By September 2024, the IZG aims to support data exchange between:

- VHA Vista and 56 jurisdictions
- DOD and 9 jurisdictions
- EDN and 36 jurisdictions



IIS-Consumer

Support new consumer access connections to improve the availability of patient immunization records.



IIS-CDC

Work with additional jurisdictions that are interested and well-positioned for IIS-to-CDC data exchange.

IZ Gateway will onboard 2 new jurisdictions to submit immunization data files to CDC

Thank you!

Questions?

For more information, contact CDC
1-800-CDC-INFO (232-4636)
TTY: 1-888-232-6348 [cdc.gov](https://www.cdc.gov)

The findings and conclusions in this report are those of the authors and do not necessarily represent the official position of the U.S. Centers for Disease Control and Prevention.

