



Rise to Immunize®

Successes and challenges in
improving adult vaccination among
US healthcare systems

Elizabeth Ciemins, PhD, MPH, MA



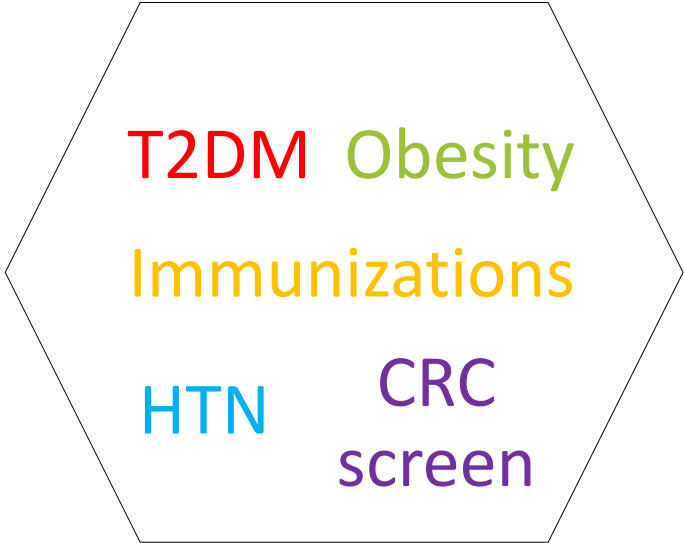


AMGA Overview

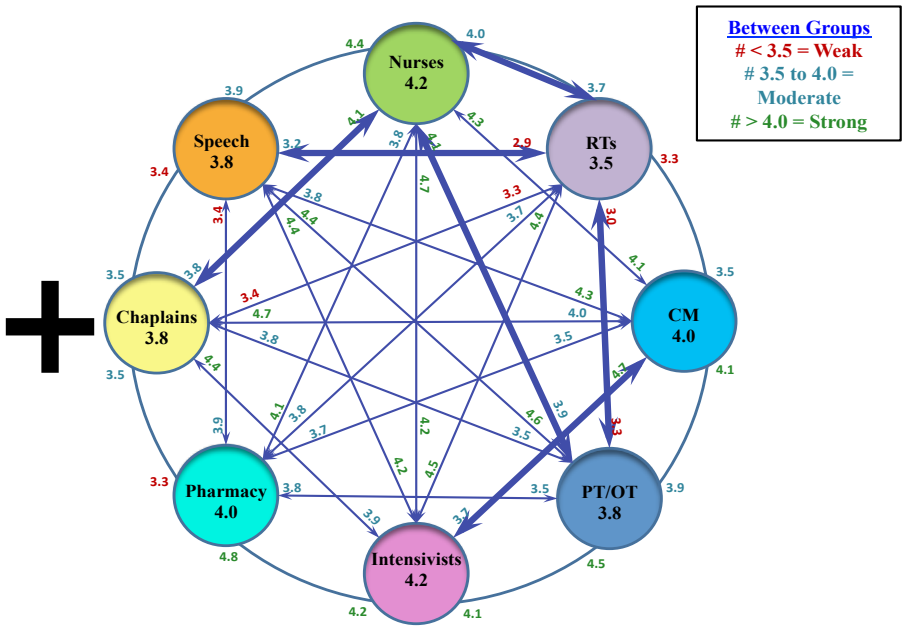
AMGA: What we do



+



+



AMGA Today



400+

Medical group
and health
system members

177,000

Physicians
practice at AMGA
member groups

> 1 in 3

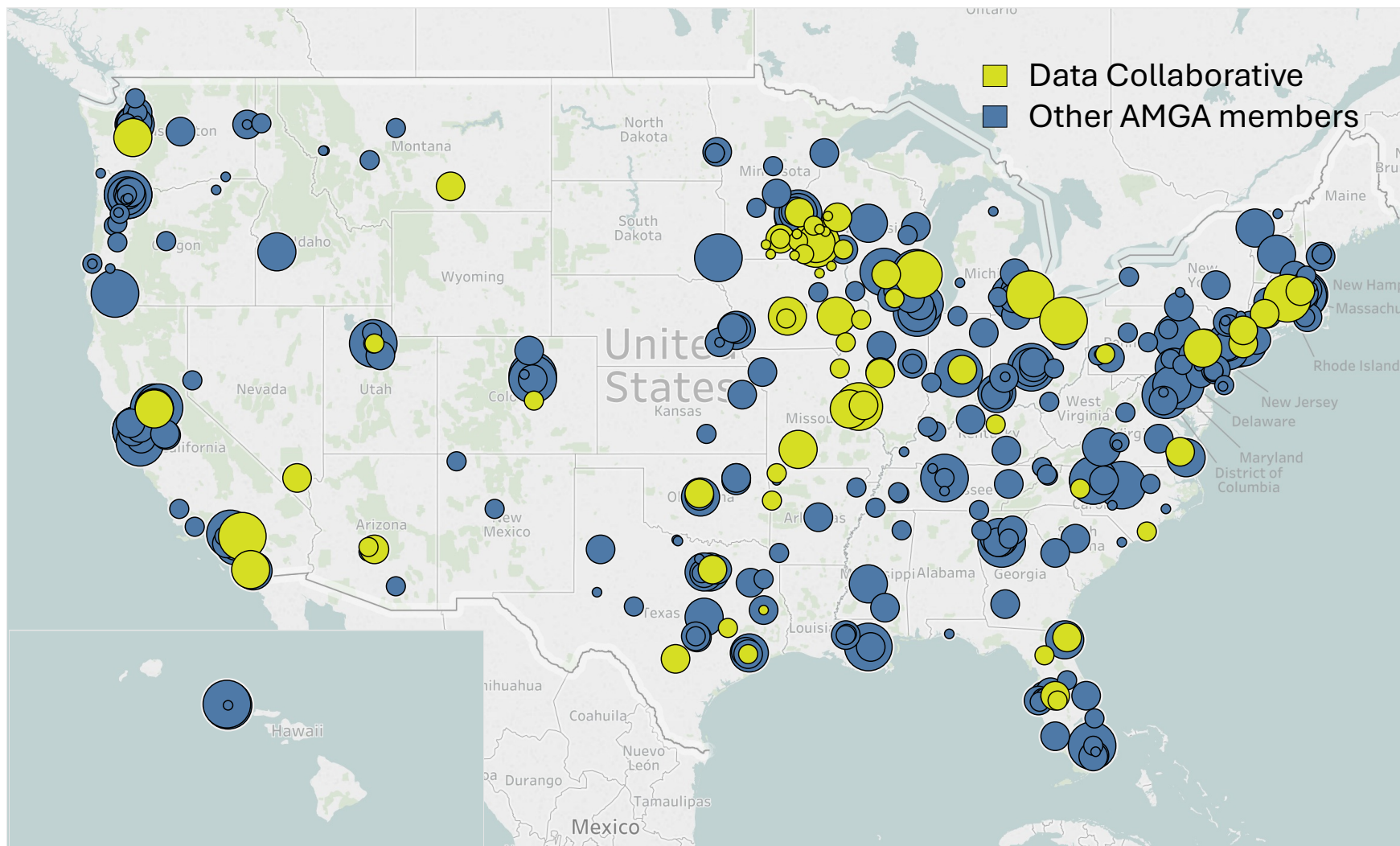
Americans receive
care from an AMGA
member



Representative AMGA Members



AMGA Membership





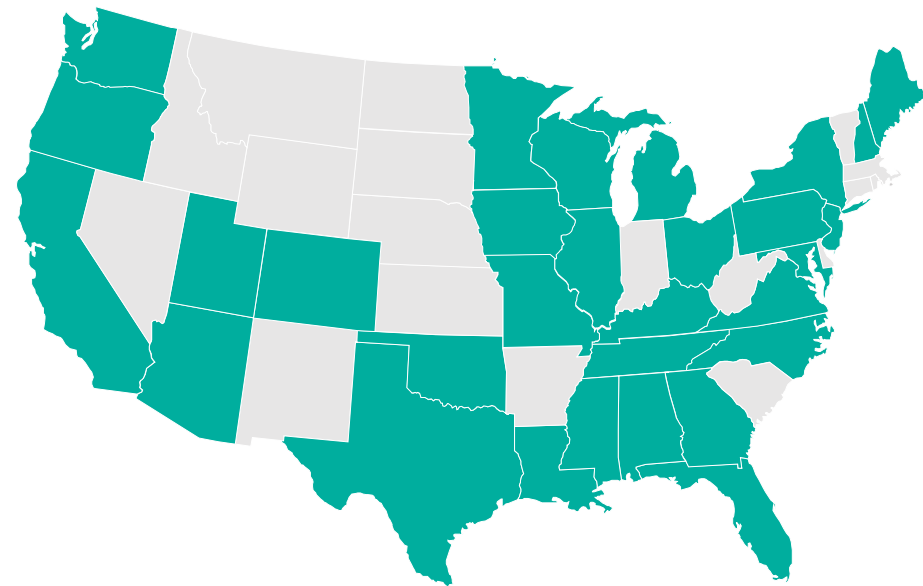
Rise to Immunize Campaign®

Rise to Immunize®



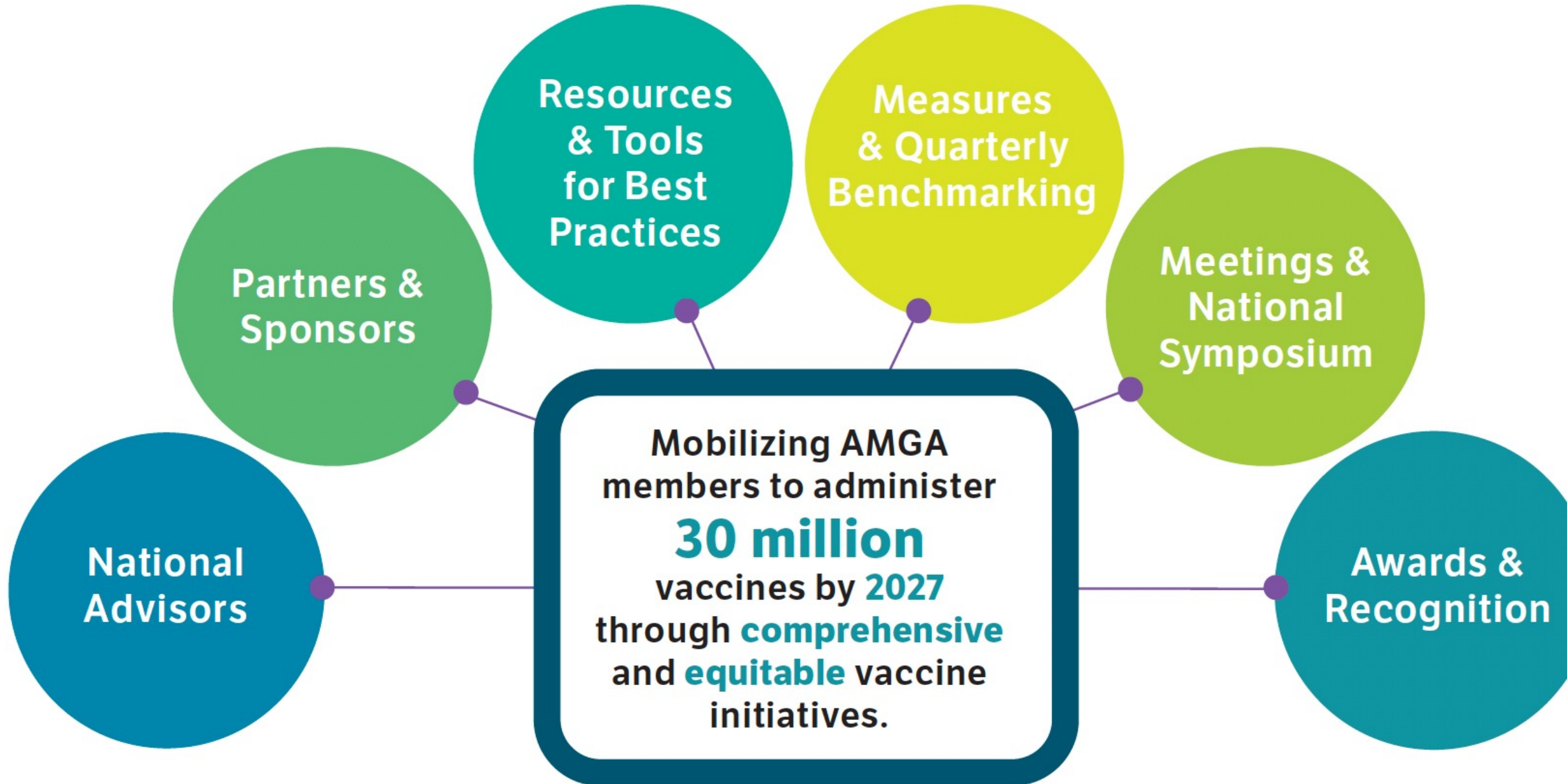
National campaign to improve adult vaccination rates.

- Campaign Participants: **85**
- FTE Physicians: **54,294**
- States: **30**



■ State with RIZE participating HCO

FRAMEWORK



Vaccine Measures



Influenza (19+)

Pneumococcal (66+)*

Td/Tdap (19+)

Zoster (50+)

Bundle (66+) all 4 vax



RSV (75+)

COVID-19 (19+)

Hepatitis B (19-59)

*Subset of Participants: +High Risk Pneumococcal (19-64 with underlying medical conditions)

Participating Organizations

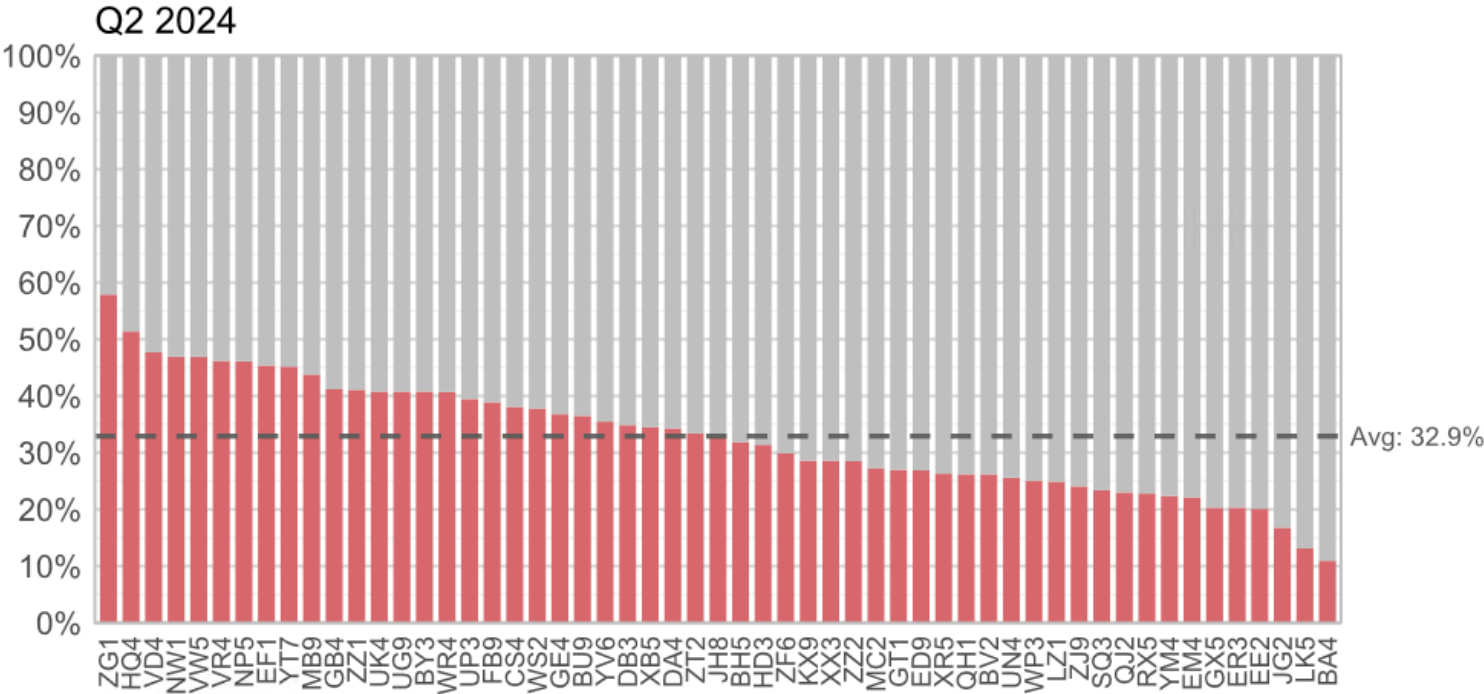


High Risk Pneumococcal Participating Organizations





Blinded Comparative Data Report – Example: Influenza



Top 5 Highest Influenza Vaccination Rates in Q2 2024		
Org	Rank	Rate
ZG1	1	57.9%
HQ4	2	51.4%
VD4	3	47.7%
NW1	4	46.9%
VW5	5	46.9%

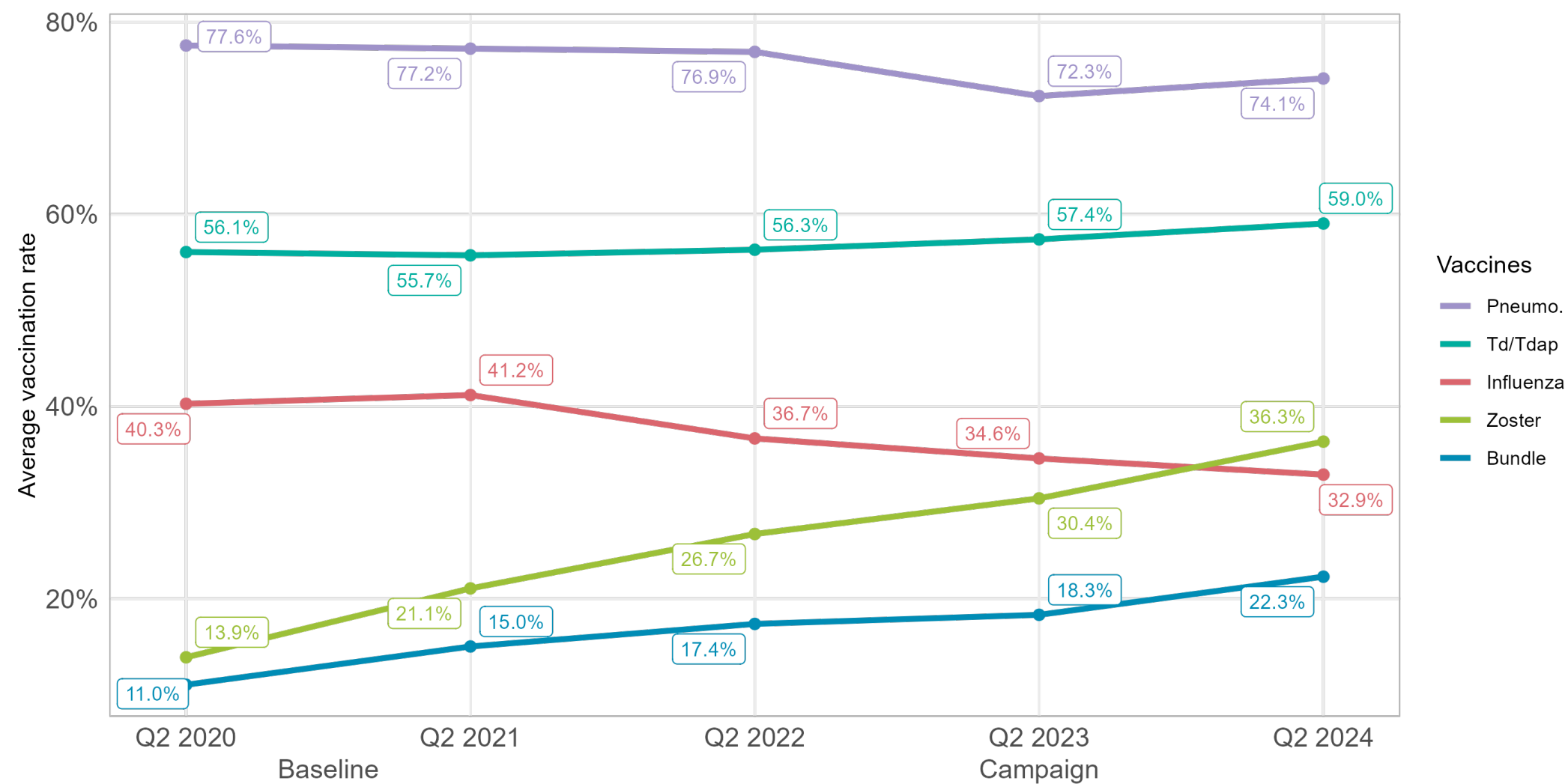
Top 5 Most Improved Orgs by Rank	
# of spots moved from Q2 2023 to Q2 2024	
Org	Increase in Rank
GE4	11
FB9	9
EF1	8
ZT2	8
ZF6	8

Top 5 Orgs with Largest Increase (or Smallest Decrease) in Rate	
Change from Q2 2023 to Q2 2024	
Org	Change in Rate
GX5	5.9%
FB9	5.6%
GE4	5.4%
RX5	3.6%
ZT2	3.2%

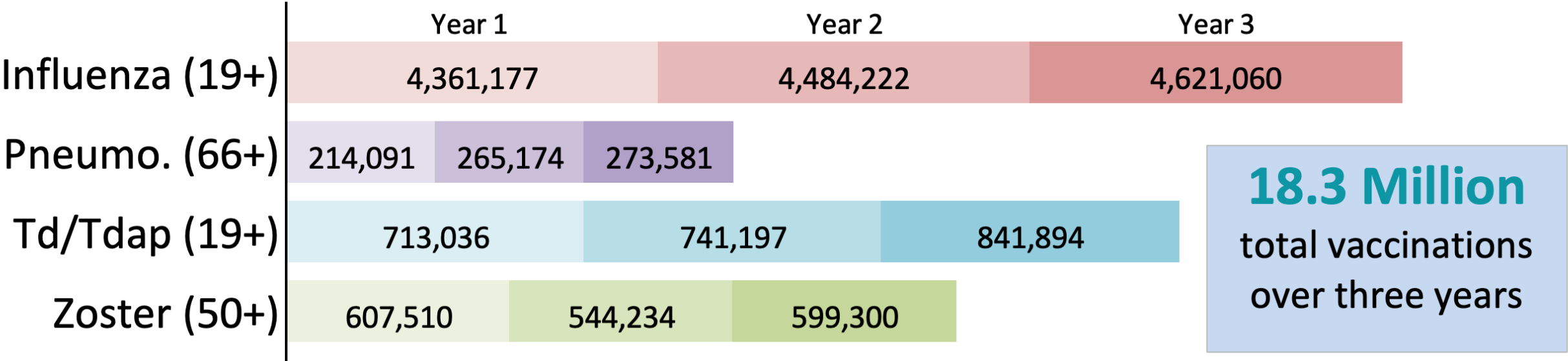


Results, Best Practices, & Lessons Learned

Average vaccination rates across HCOs, 2020–2024 (n=56)



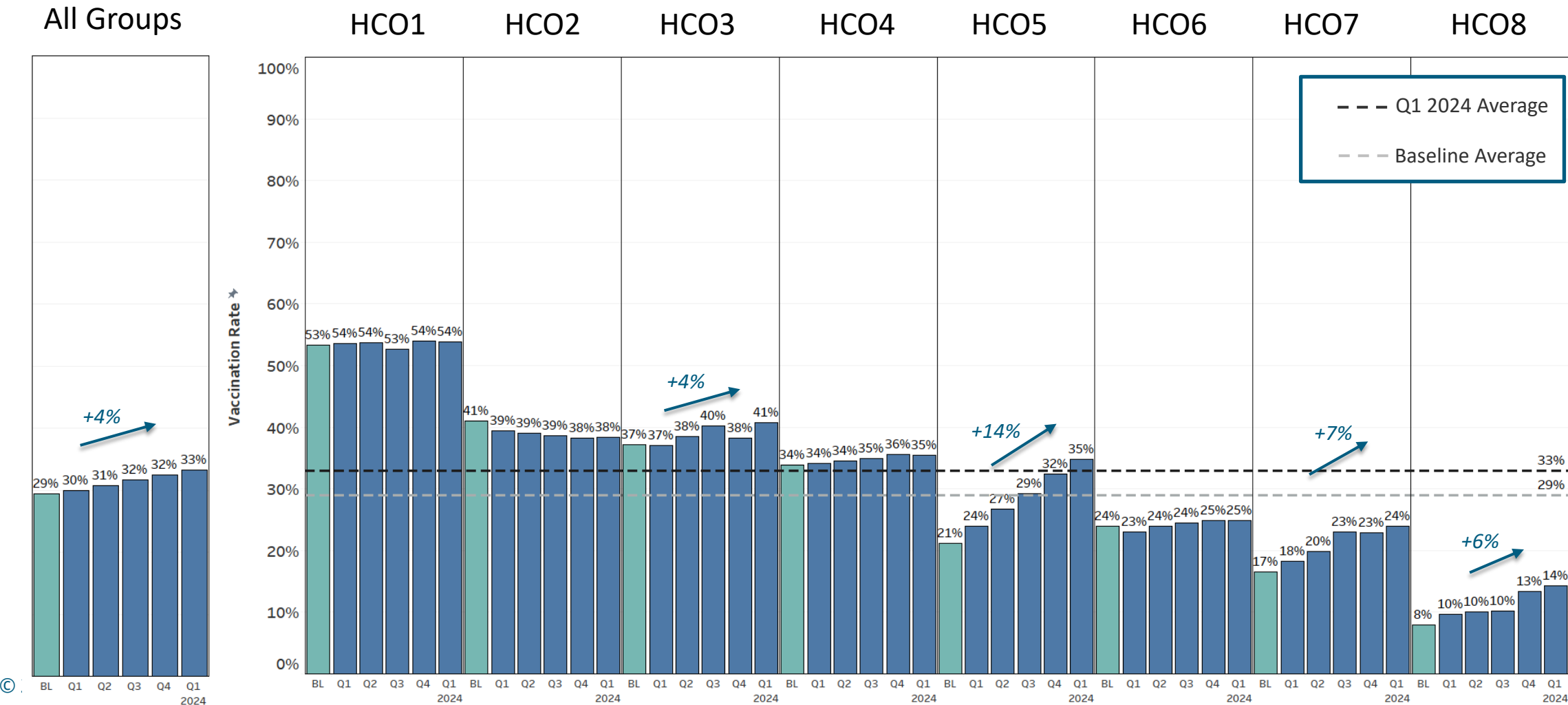
Total vaccinations administered or documented over 3-year campaign, seasons 2021/22–2023/24



Pneumococcal vaccination rates 2022-24 – high risk



Change in vaccination rates from Q4 2022 to Q1 2024 ranged from -3% to 14%. Overall, the collaborative average improved 4% from baseline.





**PROVIDER &
STAFF EDUCATION**

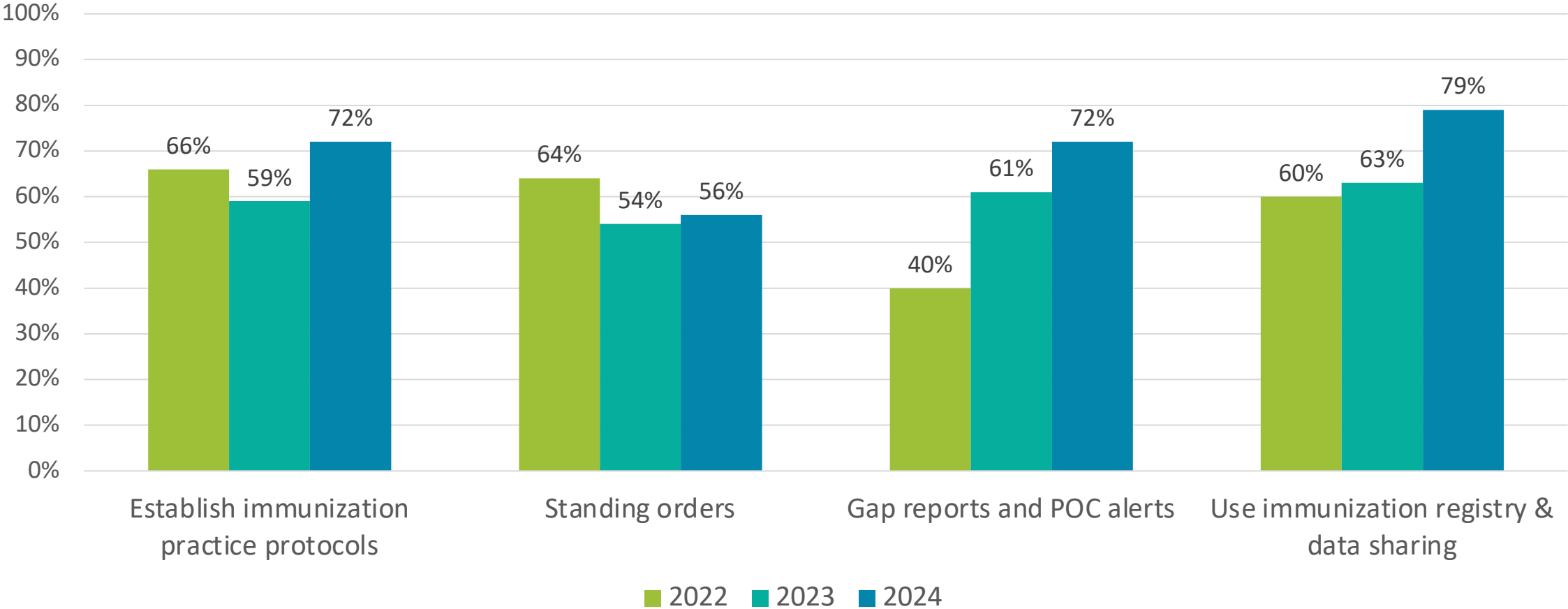
**CLINICAL
SUPPORT**

IT / DOCUMENTATION

**PATIENT
EDUCATION**

**FINANCIAL
MANAGEMENT**

Plank Implementation Progress (n≈45)



Barriers to vaccine uptake



**Provider burnout and
hesitancy**



**Organizational
challenges**



**Patient mistrust and
lack of vaccine access**



**Changing vaccine recommendations
and messaging**

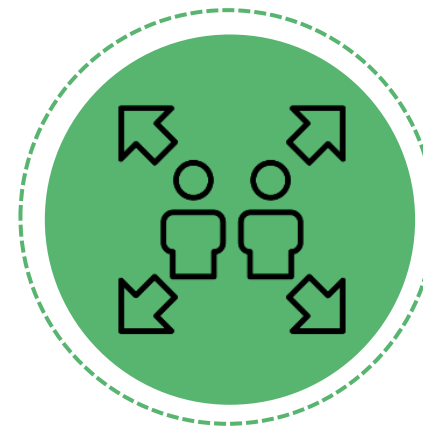


**Data and logistical
limitations**

Drivers of Vaccine Uptake



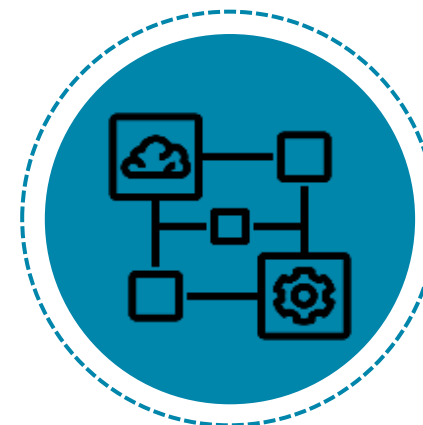
**Empowered Providers
and Staff**



**Robust Patient
Outreach Initiatives**



**Comprehensive
Clinical Support**



Optimized IT/Data

Best Practices Snapshot: UCSF Health's Flu Vaccination Strategy for Patients and Employees



Roving Community Health Initiative (RCHI)



Increasing Seasonal Flu Vaccination Among UCSF East Bay Employees



Vaccination Taskforce Communications

Flu Vaccines Available Now

Ask us how to get your flu shot today.

Can't today? Here's how to schedule your flu shot.

- 1| Visit our website for flu clinic times and locations (for kids and adults)
- 2| Call your doctor's office to schedule a visit
- 3| Check your MyChart account to see if you can self-schedule online

<https://www.ucsfhealth.org/flu>

UCSF Benioff Children's Hospitals
Oakland | San Francisco

Campaign Supporters



Sponsors



Founding Sponsor



MERCK

Johnson
& Johnson

Principal Sponsors



Achieving Sponsor



Contributing Sponsor

CSL Seqirus

Supporting Sponsor

Partners



National
Adult and
Influenza
Immunization
Summit



THE SOCIETY
FOR POST-ACUTE AND
LONG-TERM
CARE MEDICINE



NATIONAL
Minority Quality Forum



National
Foundation for
Infectious
Diseases



Immunize.org



UNITY™
United for adolescent
vaccination



THE
GERONTOLOGICAL
SOCIETY OF AMERICA®



HEPATITIS B
FOUNDATION



VACCINATE
YOUR FAMILY

* Pneumococcal Collaborative Exclusive Sponsor

Questions?



For more information contact Elizabeth Ciemins, eciemins@amga.org or Emily Nick, enick@amga.org.