

ACIP Update

Lisa Grohskopf, MD, MPH
Medical Officer
Influenza Division, CDC

National Influenza Vaccine Summit
May 15, 2013

National Center for Immunization & Respiratory Diseases
Influenza Division



ACIP Influenza Statement, 2013-14

- ❑ **Will be presented at June 20 ACIP meeting**
- ❑ **Recommendations not final until adopted by CDC Director**
- ❑ **No major changes or expansion of recommendations**
- ❑ **New items:**
 - New abbreviations
 - Four new vaccine products available for 2013-14
 - No preferential recommendations

Influenza Vaccine Abbreviations

- ❑ TIV (Trivalent Influenza Vaccine) replaced with IIV (Inactivated Influenza Vaccine):
 - IIV refers to inactivated influenza vaccines as a class (egg and cell-culture based)
 - Includes trivalent (IIV3) and quadrivalent (IIV4) inactivated vaccines;
 - Where necessary, cell-culture-based IIV is referred to as cIIV/cIIV3;
- ❑ RIV refers to recombinant HA influenza vaccine (available as a trivalent, RIV3, for 2013-14);
- ❑ LAIV refers to Live Attenuated Influenza Vaccine (available as a quadrivalent, LAIV4, for 2013-14).

Overview of 2013-2014 Influenza Vaccines

- ❑ **Standard dose IIV**
 - Formulations available for person 6 mos. and older (age indications differ by brand)
 - Trivalent (egg- and cell culture- based) and quadrivalent (egg-based) for 2013-14
 - Contain 15 mcg of hemagglutinin (HA) per vaccine virus strain (total of 45 mcg for trivalent, 60 for quadrivalent)
- ❑ **High dose IIV**
 - Contains 60 mcg of HA per vaccine virus strain (180 mcg total)
 - Trivalent only for 2013-14
- ❑ **Intradermal IIV**
 - For persons aged 18 through 64 yrs
 - Trivalent only for 2013-14
- ❑ **LAIV**
 - For healthy, non-pregnant persons 2 through 49 yrs
 - Quadrivalent only for 2013-14
- ❑ **RIV**
 - For persons aged 18 through 49 yrs.
 - Trivalent only for 2013-14

Recently-approved Influenza Vaccines

- As in recent previous seasons, several appropriate options for many influenza vaccine recipients
- All newly approved influenza vaccines expected to be available for 2013-2014 are acceptable alternatives to the other licensed vaccine products, within specified indications.
- No formal preferential recommendation is proposed for one vaccine product over another where more than one is appropriate for a given recipient.

Influenza Vaccination for Persons with Egg Allergy— 2012-13

- **Persons with a history of egg allergy who have experienced ONLY hives as a reaction to egg should receive IIV**
 - Should be administered by a provider familiar with potential manifestations of egg allergy
 - IIV rather than LAIV should be used
 - Recipient should be observed for at least 30 minutes following each dose
 - Skin testing with vaccine and splitting the vaccine dose not necessary
- **Those with other symptoms upon egg exposure should be referred to an allergy expert prior to vaccination**

MMWR 2012;61(32):613-618.

Thank You

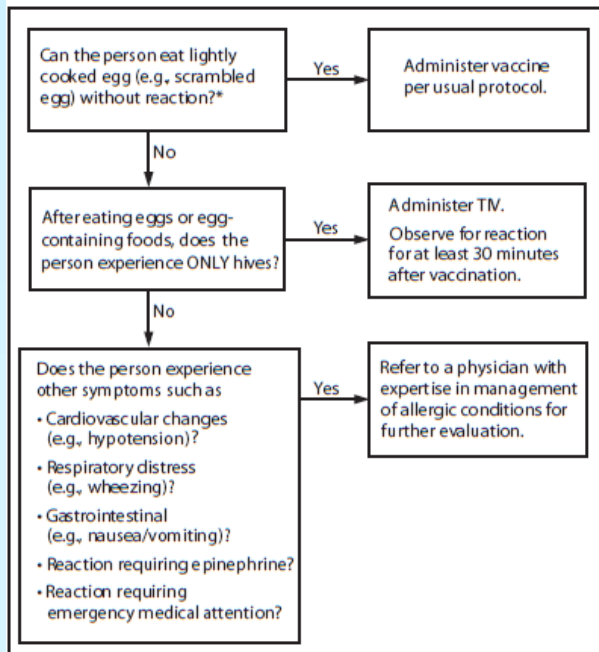
For more information please contact Centers for Disease Control and Prevention

1600 Clifton Road NE, Atlanta, GA 30333
Telephone: 1-800-CDC-INFO (232-4636)/TTY: 1-888-232-6348
E-mail: cdcinfo@cdc.gov Web: www.cdc.gov

National Center for Immunization and Respiratory Diseases
Influenza Division.



Influenza Vaccination for Persons with Egg Allergy—current recommendations



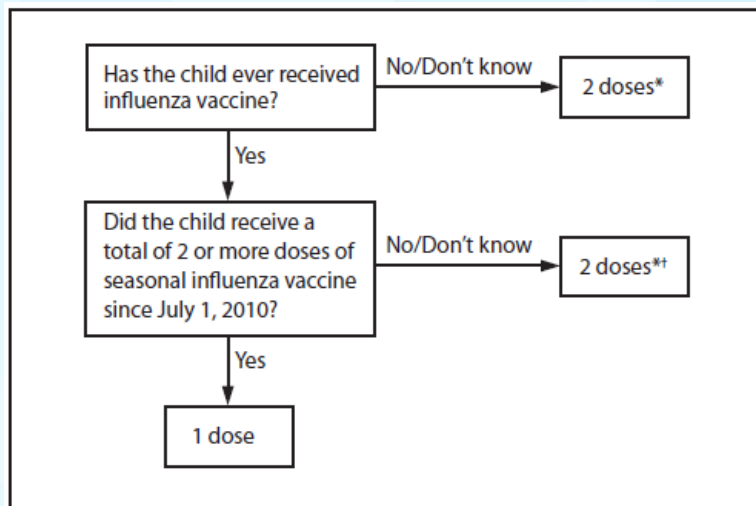
MMWR 2012;61(32):613-618.

Dose algorithm for 6mo through 8yr olds

- ❑ For 2012-13, two acceptable approaches
- ❑ These differ in whether or not vaccination history prior to the 2010-2011 season is considered

MMWR 2012;61(32):613-618.

Dose algorithm for 6mo through 8yr olds, 2012-2013 season—First approach



* Doses should be administered a minimum of 4 weeks apart.

MMWR 2012;61(32):613-618.

Dose algorithm for 6mo through 8yr olds, 2012-2013 season—Alternative approach

- ❑ **If vaccination history before 2010–11 is available**
- ❑ **Only one dose needed if child received**
 - ≥ 2 seasonal influenza vaccines during any previous season,
 - AND ≥ 1 dose of a 2009(H1N1)-containing vaccine
- ❑ **Other in this age group need two doses**
- ❑ **Need only 1 dose of vaccine in 2012–13 if they have received any of the following:**
 - 2 or more doses of seasonal influenza vaccine since July 1, 2010; or
 - 2 or more doses of seasonal influenza vaccine before July 1, 2010, and 1 or more doses of monovalent 2009(H1N1) vaccine; or
 - 1 or more doses of seasonal influenza vaccine before July 1, 2010, and 1 or more doses of seasonal influenza vaccine since July 1, 2010.

MMWR 2012;61(32):613-618.