



European Scientific Working group on Influenza

Ab Osterhaus, Chairman
Chris Vanlangendonck, Semiotics

European Scientists Fighting Influenza

2012



**A multidisciplinary scientifically
independent partnership between:**

- **Members:** Independent influenza experts
- **Partner organizations:** Shared goals
- **Associate members:** experts with advisory roles



Members

- **Dr. G.A. van Essen**, The Netherlands (GP)
- **Dr. T. Heikkinen**, Finland (paediatrician)
- **Dr. P. Openshaw**, UK (immunologist; Vice-President)
- **Dr. A.D.M.E. Osterhaus**, The Netherlands (virologist, President)
- **Dr. R. Prymula**, Czech Republic (epidemiologist)
- **Dr. T.D. Szucs**, Switzerland (pharmaco-economist)
- **Dr. S. van der Werf**, France (virologist)
- **Dr. A. Monto**, USA (epidemiologist)
- **Dr. G. Gabriel**, Germany (virologist)
- **Dr. B. Lina**, France (virologist)
- **Dr. M. Ciblak**, Turkey (microbiologist)
- **Dr. V. Munster**, USA (virologist)



Associate Members

- **Dr. C. Hannoun** - former Institut Pasteur, Paris
- **Dr. J.E. McElhaney** - Farmington, CT, U.S.A.
- **Dr. M. Kunze** - University of Vienna, Austria
- **Dr. U. Elonsalo** - Institute for Health and Welfare, Finland
- **Dr. M. Fletcher** - Education for Health, UK

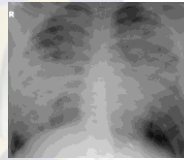


ESWI's mission

- **Reducing the disease burden and fatal cases** of influenza in Europe

- **Focus on:**

- *Behavioural change*
- *Public health policy*
- *WHO`s and EU`s health protection objectives*
- *Stakeholder management*
 - ~ *identifying relevant stakeholders*
 - ~ *communicating with them*
 - ~ *facilitating interactions between them*



ESWI's driving motives:

- Fact 1:* **European health care systems among the best in the world**
- Fact 2:* **Influenza claims more lives than traffic accidents**
- Fact 3:* **Influenza - at least in part - preventable by vaccination and other interventions**
- Fact 4:* **Special risk groups identified**



Partnership of influenza stakeholders

ESWI as a partnership organization:

- Meets specific objectives
- Addresses problems that no partner could tackle on its own
- Builds on successful common ground long-term partnership
- Common ground in improving public health in Europe



Scientific independence

- All major vaccine and antiviral companies as sponsors
- Equal financial contribution by all sponsors
- Sponsors are non-voting partners
- ESWI has legally formalized its independence:
 - **articles of incorporation**
 - **rules of practice**approved and respected by all parties

Members gain no personal financial benefit from ESWI



Structural collaboration with partner organizations (1)

- European Respiratory Society (ERS)
- Pharmaceutical Group to the EU (PGEU)
- World Organization of Family Doctors (WONCA)
- European Medical Association (EMA)
- European Public Health Alliance (EPHA)
- International Diabetes Federation-Europe (IDF-Europe)
- European Lung Foundation (ELF)
- European Union Geriatric Medicine Society (EUGMS)
- European Academy of Allergy & Clinical Immunology (EAACI)



Structural collaboration with partner organizations (2)

- World Health Organization (WHO)
- European influenza vaccines and antivirals manufacturers
- AGE-Platform
- European Fed of Allergy and Airways Diseases Patients Association (EFA)
- European Academy of Paediatrics (EAP)
- European Society for Paediatric Infectious Diseases (ESPID)
- European Association of Hospital Managers (EAHM)
- European Regional and Local Health Authorities (EUREGHA)
- US National Influenza Vaccine Summit



ESWI links

- info@eswi.org
- www.eswi.org
- www.semiotics.be (management, campaigning and advocacy)
- www.flucenter.org
(on-line educational tool for HCWs)
- www.flucenter.org/media-library/p/detail/influenza-aiming-at-a-moving-target
(documentaries and other films)
- www.flucommunity.org
(facebook-like virtual platform, to be launched soon)
- www.flusummit.org



European Flu Summit

- **Platform for influenza stakeholder organizations**
 - Exchange good practice
 - Initiate concrete actions
 - Inspired by US National Flu Vaccine Summit
- **First edition on 26 May 2011:**
 - Approximately 100 attendees
 - 11 tailor-made lectures
 - Co-operation with DG Sanco and WHO-Europe
 - Educational press workshop, day 2



European Flu Summits

- **Second edition:**



23 MAY 2012
BRUSSELS
ALBERT HALL COMPLEX



European Flu Summit, Brussels, 23 May 2012

- **Expected number of attendees: 100-120**
- **From partner organisations**
- **Conference report published:
open access *Vaccine* edition**



European Flu Summit, 23 May 2012

09:00-09:10	Coffee / welcome	12:45-13:30	Lunch
09:10-09:25	Opening of the Summit Mr. Henning Waltherich, Health Threats Unit, EC Directorate-General for Health and Consumers	13:30-13:50	The power of stakeholder collaboration Dr. H. Bahadır Sözcüoğlu, Primary Health Care General Directorate, Ministry of Health, Turkey
09:25-09:40	Policies and coverage of pandemic and seasonal vaccine in 53 Member States: survey results Dr. Caroline Brown, head of respiratory pathogens programme, WHO's Europe office Copenhagen	13:50-14:00	Q&A
09:40-09:55	Why is influenza a dangerous disease? Prof. Dr. A.D.M.E. Osterhaus, head department of Virology, Erasmus MC, Rotterdam, The Netherlands / ESWI chair	14:00-14:20	Influenza in asthma patients Dr. Christyanna S. Szevali, University of Ioannina, representing the European Academy of Allergy & Clinical Immunology (EAACI)
09:55-10:00	Q&A	14:20-14:30	Q&A
10:00-10:20	The impact of flu on lung patients Prof. Peter Openshaw, Imperial College London, UK / ESWI Vice-Chair	14:30-14:50	Nurses: at the forefront in the fight against influenza Ms Erica Haines, Lead for Oxygen Services, Buckinghamshire Healthcare, UK
10:20-10:30	Q&A	14:50-15:00	Q&A
10:30-10:50	The role of pharmacists in prevention and treatment of influenza Ms Pamela Logan, Director of Pharmacy Services, HPH Pharmacy Union	15:00-15:15	Coffee Break
10:50-11:00	Q&A	15:15-15:35	Should children be vaccinated against influenza? Dr. Maria Tsolia, Department of Pediatrics, University of Athens, Greece
11:00-11:15	Coffee Break	15:35-15:45	Q&A
11:15-11:35	Controversial issues: universal recommendation and mandatory vaccination of healthcare providers Dr. Lijun Tan, American Medical Association, co-chair US National Influenza Vaccine Summit	15:45-16:10	Vaccination of healthcare providers: the role of general practitioners Dr. Vincenzo Costagliola, president of the European Medical Association (EMA)
11:35-11:45	Q&A	16:10-16:15	Q&A
11:45-12:05	Improving influenza vaccination in nursing homes Dr. Gaëtan Garaviz, Clinique universitaire de Médecine Gériatrique, Grenoble, France	16:15-16:45	Exchange of views and opinions
12:05-12:15	Q&A	16:45-17:00	End of the Meeting - Main outcomes
12:15-12:35	The role of patient organizations Prof. Dr. Anne Mallat, Department of Pediatrics UZ Brussel	17:00-17:30	Closing drink
12:35-12:45	Q&A		



European Flu Summits

Combined with Science Inspired Tales

S!T[®]
SCIENCE
INSPIRED
TALES





STAGING FASCINATING SCIENTIFIC EXPERTS!

Programme

18:00-18:10	Introduction / welcome
18:10-18:30	Viruses: are we winning battles but losing the war? Prof Dr A.D.M.E. Osterhaus, head department of Virology, Erasmus MC Rotterdam, The Netherlands
18:35-18:55	Is there a doctor in the house? Prof Peter Openshaw, Imperial College London, UK
19:00-19:20	Viruses travel tricky routes Dr Colin Russell, Cambridge University, UK

REGISTRATION:

You are very welcome to attend the Science Inspired Tales free of charge. Kindly register via www.flusummit.org/sit

DATE:

23 May 2012, start at 18:00h - end at 19:30h

VENUE:

Albert Hall Complex
Waversesteenweg 649-651
Chausée de Wavre
Brussels, Belgium

The Science Inspired Tales are an initiative of the European Scientific Working group on Influenza (ESWI), a network of scientific experts who join forces to reduce the burden of influenza in Europe.
www.eswi.org
www.flucentre.org
www.flusummit.org



ESWI

Concept by Semiotics, www.semiotics.be - RP: Chris VanLangendonck, Tamarastraat 18 9070 Heusden