

Influenza Vaccination Coverage: How well did we do in 2011-12?

Erin D. Kennedy, DVM, MS, MPH
LCDR, United States Public Health Service

National Influenza Vaccine Summit
May 16, 2012

National Center for Immunization & Respiratory Diseases
Immunization Services Division

Outline

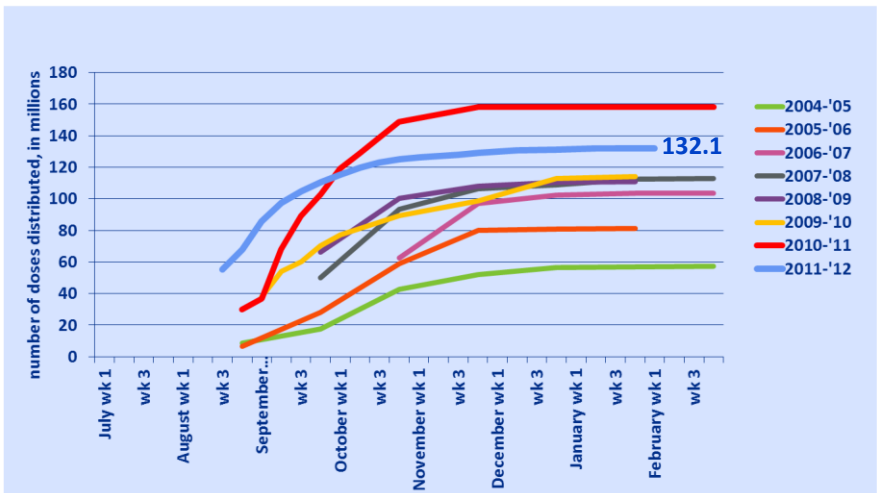
- ❑ **2011-12 Flu Season Overview**
- ❑ **Preliminary 2011-12 Season Coverage**
- ❑ **Summary and Recommendations**

2011-12 SEASON OVERVIEW

2011-12 Season Overview

- ❑ **Second season since universal influenza vaccination recommendation**
- ❑ **Second influenza season since the 2009 H1N1 pandemic**
- ❑ **All vaccine strains remained the same as the previous season**

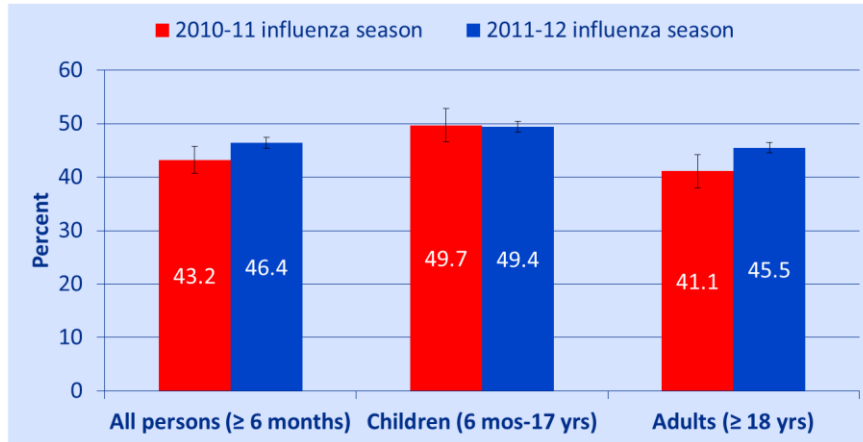
Cumulative number of doses distributed by season



National Immunization Survey (children) and National Flu Survey (adults)

PRELIMINARY 2011-12 SEASON COVERAGE ESTIMATES

Preliminary influenza vaccination coverage estimates by age group and season, March National Immunization Survey and National Flu Survey*



*March 2012 National Immunization Survey (NIS) data for children 6 months through 17 years of age
 March 2012 National Flu Survey (NFS) data for adults ≥ 18 years of age

Preliminary influenza vaccination coverage among children, March National Immunization Survey

Age Group	March 2011 % (95% CI)*	March 2012 % (95% CI)*
All children (6m-17years)	49.7 ± 3.1	49.4 ± 2.2
6-23 months	66.3 ± 10.3 [§]	67.5 ± 7.0
2-4 years	54.4 ± 8.9	58.5 ± 5.5
5-17 years	46.6 ± 3.5	45.1 ± 2.4

* Percentages are weighted to the U.S. population; CI-Confidence interval half-width
[§] Estimate may not be reliable, confidence interval half-width >10.

**Preliminary influenza vaccination coverage among
adults,
March National Flu Survey**

Age Group	March 2011 % (95% CI)*	March 2012 % (95% CI)*
All adults (≥ 18 years)	41.1 ± 3.1	45.5 ± 1.5
18-49 years	28.6 ± 4.1	35.8 ± 2.1
50-64 years	47.7 ± 5.6	51.0 ± 2.6
≥ 65 years	74.7 ± 4.8	70.8 ± 2.3

** Percentages are weighted to the U.S. population; CI-Confidence interval half-width
§Estimate may not be reliable, confidence interval half-width >10.*

**Preliminary influenza vaccination coverage among
children by race and ethnicity,
March National Immunization Survey**

Age Group	March 2011 % (95% CI)*	March 2012 % (95% CI)*
Hispanic	61.2 ± 7.7	60.9 ± 5.5
Non-Hispanic, White	45.6 ± 3.6	44.9 ± 2.5
Non-Hispanic, Black	48.3 ± 9.1	48.2 ± 5.8
Non-Hispanic, Other	49.4 ± 11.1 [§]	53.6 ± 6.5

** Percentages are weighted to the U.S. population; CI-Confidence interval half-width
§Estimate may not be reliable, confidence interval half-width >10.*

Preliminary influenza vaccination coverage among adults by race and ethnicity, March National Flu Survey

Age Group	March 2011 % (95% CI)*	March 2012 % (95% CI)*
Hispanic	29.3 ± 7.9	38.8 ± 4.7
Non-Hispanic, White	44.9 ± 3.6	49.1 ± 1.7
Non-Hispanic, Black	38.2 ± 11.3 [§]	35.6 ± 4.6
Non-Hispanic, Other	28.8 ± 8.6	40.3 ± 5.3

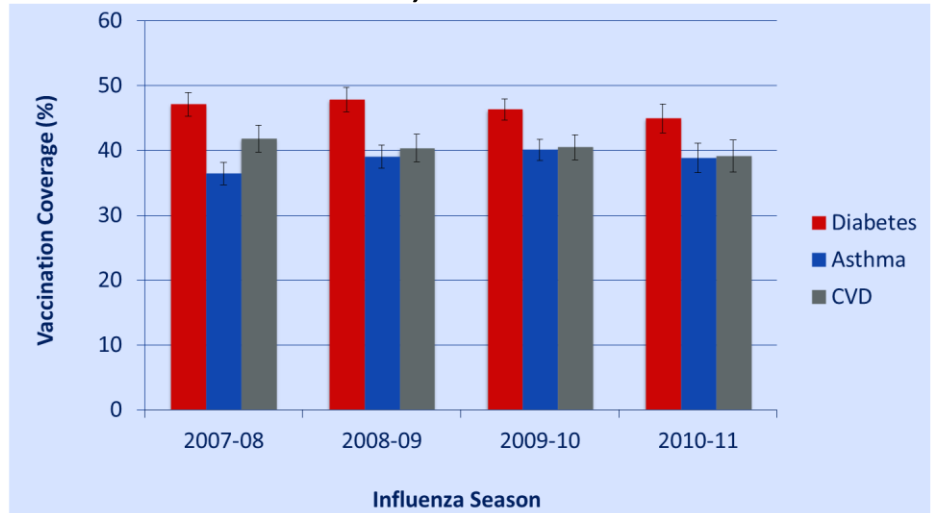
- Percentages are weighted to the U.S. population; CI-Confidence interval half-width
- [§]Estimate may not be reliable, confidence interval half-width >10.

Preliminary influenza vaccination coverage among adults by high risk status, March National Flu Survey

Age Group	March 2011 % (95% CI)*	March 2012 % (95% CI)*
Adults (18-64 years)		
High Risk	46.9 ± 8.4	50.1 ± 3.3
Non-High Risk	30.4 ± 3.4	36.3 ± 2.1

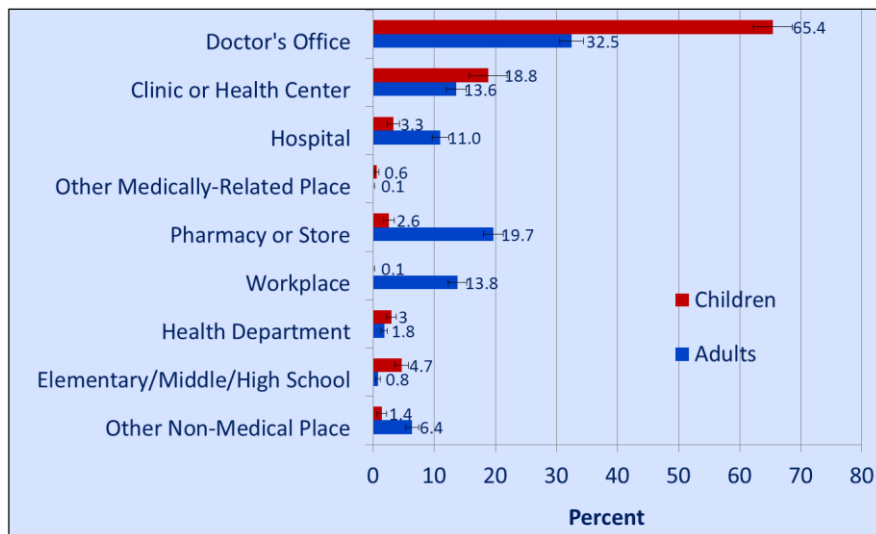
- Percentages are weighted to the U.S. population; CI-Confidence interval half-width

Influenza Vaccination Coverage Among Adults 18-64 Years who Reported Selected Chronic Conditions, BRFSS 2007–2011



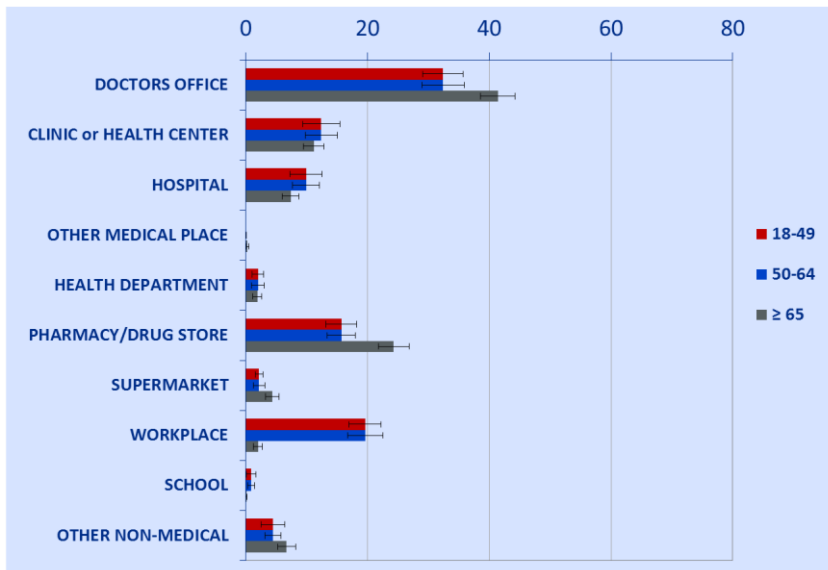
CDC, Preliminary unpublished data, 2012

Place of Vaccination by age group, March 2012 National Immunization Survey and National Flu Survey*



*March 2012 National Immunization Survey (NIS) data for children 6 months through 17 years of age
 March 2012 National Flu Survey (NFS) data for adults ≥ 18 years of age

Place of Vaccination by adult age group, March 2012 National Flu Survey



Limitations

- ❑ The 2011-12 influenza vaccination coverage estimates reported here are preliminary and may not be reflected in final end-of-season coverage estimates.
- ❑ NIS and NFS are telephone surveys excluding households with no telephone service. Non-coverage and nonresponse bias may remain after weighting adjustments.
- ❑ All data rely upon self-report and are not validated with medical records; validity studies have shown that parental report (for children) may overestimate influenza vaccination coverage.

SUMMARY AND RECOMMENDATIONS

Summary of Preliminary 2011-12 Season Coverage

- ❑ **46% of people 6 months and older were vaccinated during the 2011-12 season, a slight increase when compared to the 2010-11 season.**
- ❑ **Vaccination coverage increased slightly for adults compared to the 2010-11 season.**

Summary of Preliminary 2011-12 Season Coverage

- ❑ **Among children, Hispanics had higher vaccination coverage than non-Hispanic white and non-Hispanic black children.**
- ❑ **Among adults, coverage was highest among non-Hispanic whites compared to other racial and ethnic groups.**
- ❑ **The most common places for vaccination among both adults and children were at medical locations; retail settings and work places were other important venues for adults.**

Recommendations

- ❑ **Increase influenza vaccination coverage rates among all individuals \geq 6 months.**
- ❑ **Increase vaccination coverage among adults in certain racial and ethnic groups are necessary to decrease disparities.**
- ❑ **Implement strategies necessary to increase influenza vaccination coverage in upcoming influenza seasons.**
 - **Enhancing Access to Vaccination Services**
 - **Increasing Community Demand for Vaccinations**
 - **Provider- or System-Based Interventions**
 - **Community-Based Interventions Implemented in Combination**

<http://www.cdc.gov/flu/professionals/vaccination/nfs-survey-march2012.htm>

Acknowledgements

Carolyn Bridges, CDC

Jim Singleton, CDC

Tammy Santibanez, CDC

Stacie Greby, CDC

Amy Callis, CDC

Walter Williams, CDC

Peng-Jun Lu, CDC