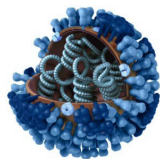


National Center for Immunization & Respiratory Diseases



Influenza Activity in the United States: 2024-2025 Influenza Season

National Adult and Influenza Immunization Summit
May 13, 2025

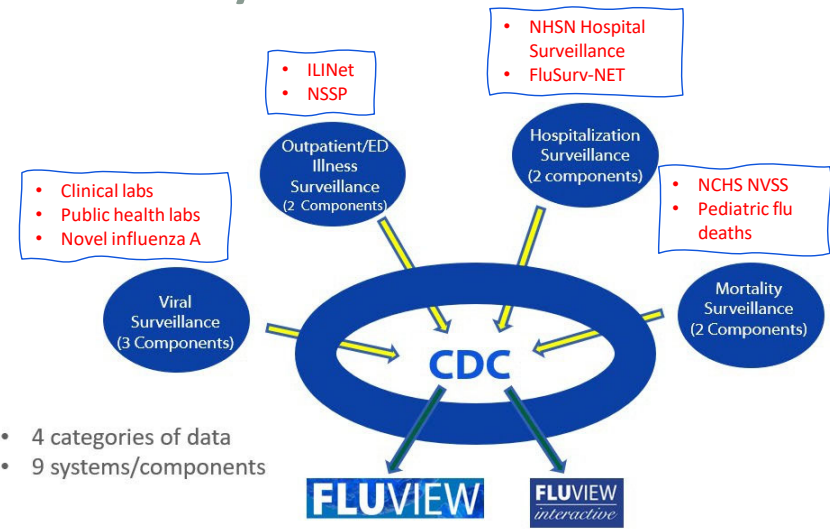
Alicia Budd, MPH
Influenza Division, NCIRD, CDC

Outline

- 2024-2025 seasonal influenza summary
- Highly Pathogenic Avian Influenza (HPAI) A(H5) human cases
- Influenza during the summer

National Influenza Surveillance System

- Influenza Surveillance Goals
 - When and where activity is occurring
 - What viruses are circulating
 - Detect changes in the viruses
 - Measure the impact on illness, hospitalization and deaths.

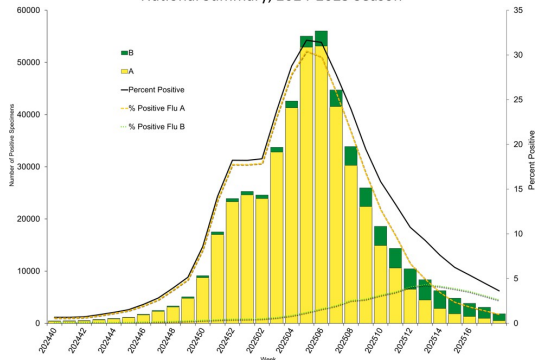


Data are summarized each week and available on FluView and FluView interactive
<https://www.cdc.gov/flu/weekly/fluactivitysurv.htm>

2024 – 2025 Influenza Activity

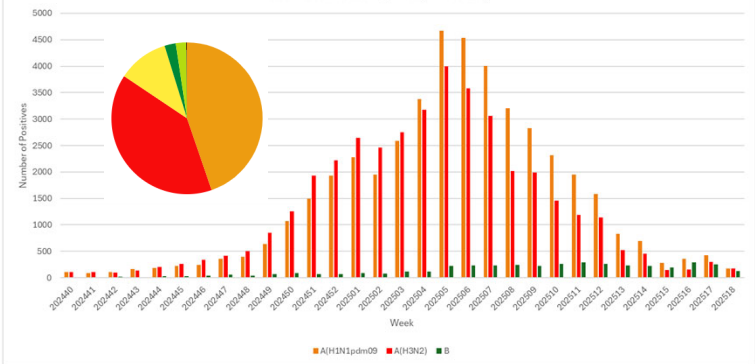
- Influenza A Predominant Season
 - Approximately even split of A/H1 and A/H3
 - A/H1 reported more frequently than A/H3 later in the season
 - Small amount of influenza B circulation, mostly later in the season
 - No B/Yams

Influenza Positive Tests Reported to CDC by U.S. Clinical Laboratories,
National Summary, 2024-2025 Season



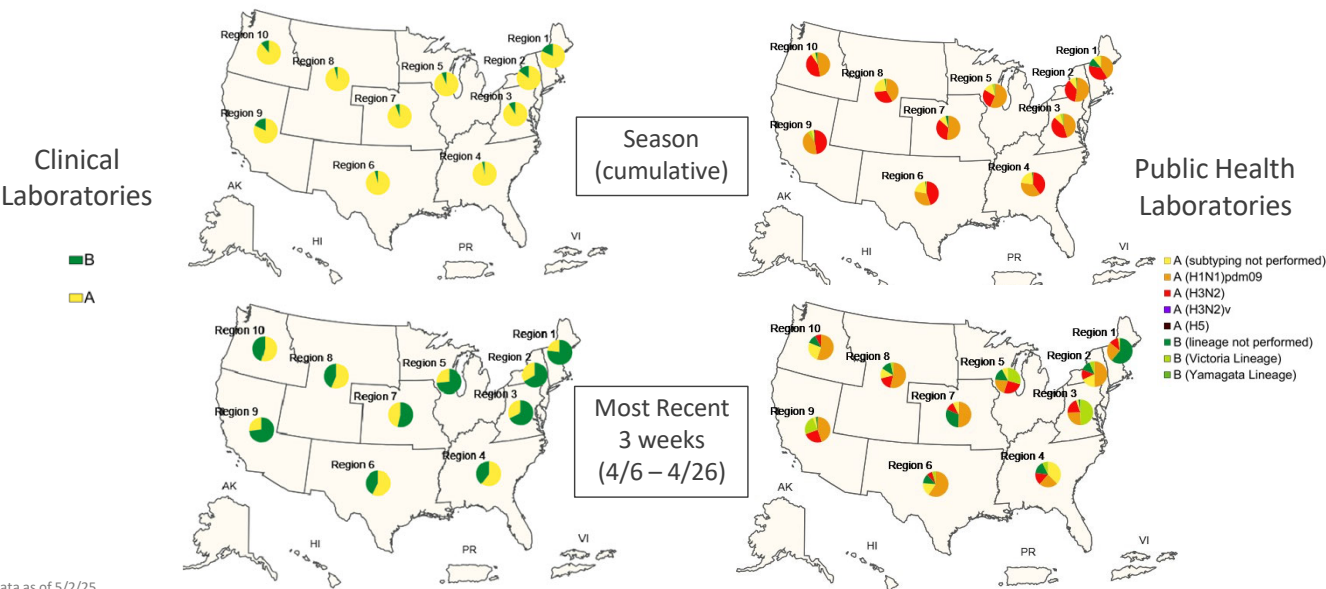
Data as of 5/9/25

Influenza Viruses* Reported to CDC by Public Health Laboratories
2024-2025 Season (through week 18)



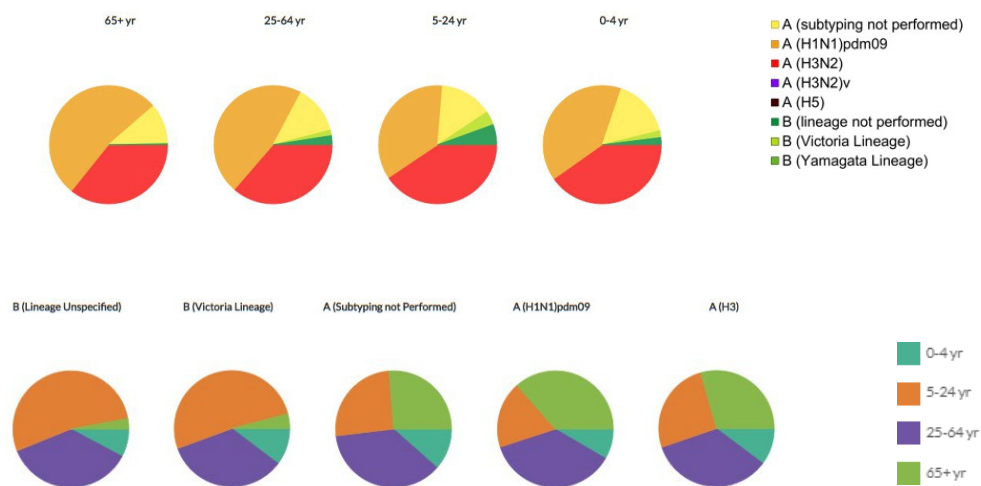
* Includes distribution of A viruses not subtyped to subtype category based on proportion that were reported with a subtype.

- Slight differences in virus distribution by HHS region



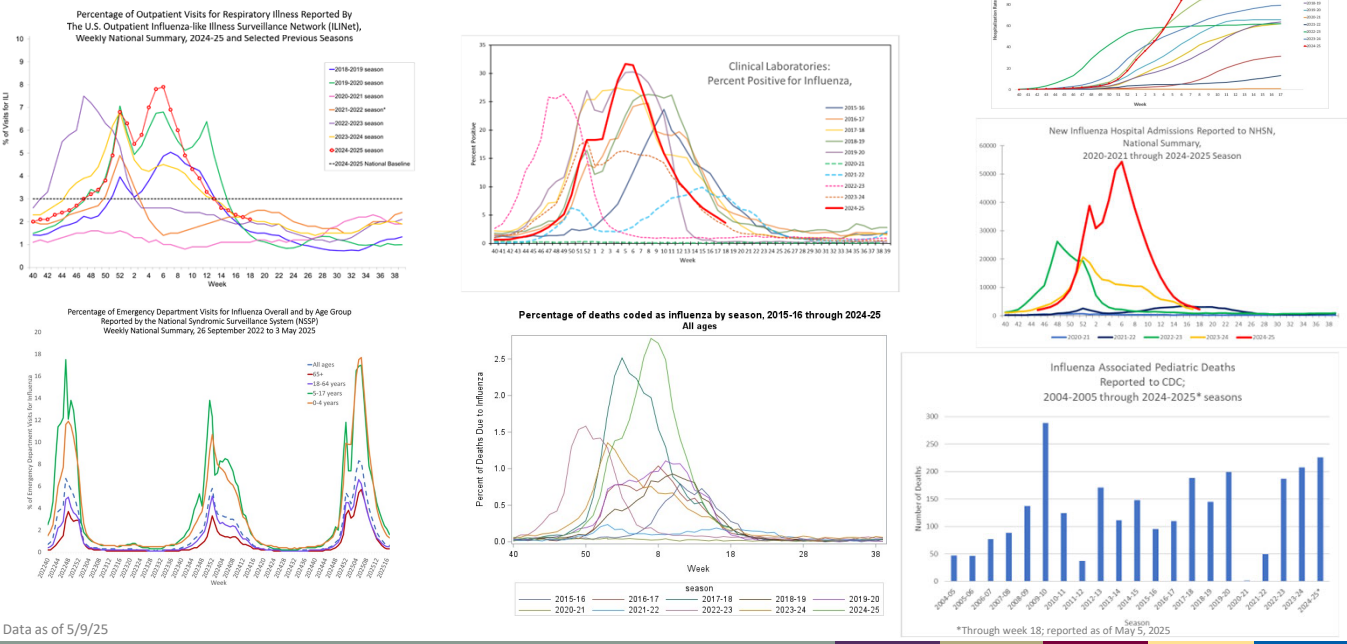
Data as of 5/2/25

Slight differences in virus distribution by age



Data as of 5/2/25

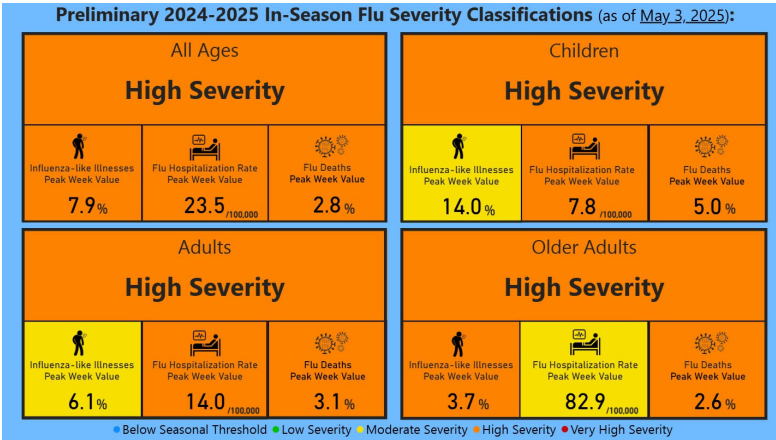
Record levels of activity, “regular” timing



Data as of 5/9/25

2024 – 2025 Season Highlights

- High severity overall and for all age groups
 - First time since 2017 - 2018



Assessment of Influenza Seasonal Severity by Age Group for 2003/2004 - 2023/2024 Seasons

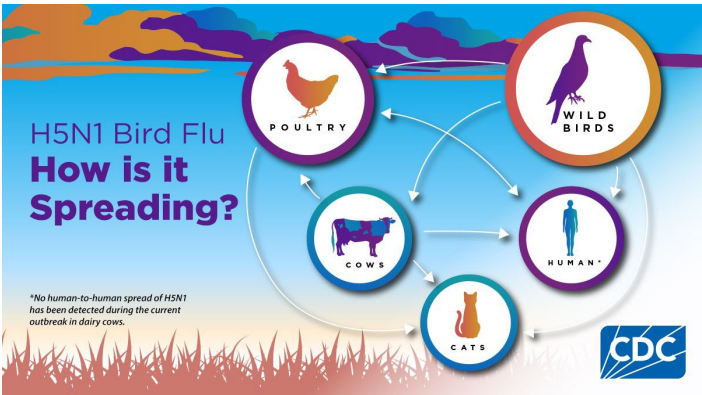
Season	0 - 17	18 - 64	65+	All Ages
2003/04	Very High	Moderate	High	High
2004/05	Low	Moderate	Moderate	Moderate
2005/06	Low	Low	Low	Low
2006/07	Low	Low	Low	Low
2007/08	Moderate	Moderate	Moderate	Moderate
2008/09	Low	Low	Low	Low
2009/10	Very High	Moderate	Low	Moderate
2010/11	Moderate	Moderate	Moderate	Moderate
2011/12	Low	Low	Low	Low
2012/13	Moderate	Moderate	High	Moderate
2013/14	Moderate	Moderate	Moderate	Moderate
2014/15	Moderate	Moderate	High	High
2015/16	Low	Moderate	Low	Moderate
2016/17	Moderate	Moderate	Moderate	Moderate
2017/18	High	High	High	High
2018/19	Moderate	Moderate	Moderate	Moderate
2019/20	High	High	Moderate	Moderate
2021/22	Low	Low	Low	Low
2022/23	High	Moderate	Moderate	Moderate
2023/24	Moderate	Moderate	Moderate	Moderate

*2020/21 flu season was not estimated because of minimal flu activity.

Highly Pathogenic Avian Influenza (HPAI) A/H5 Human Cases

Public Health Risk

- Overall risk to the public remains low
- Greater risk for people with close, prolonged, or unprotected exposures to infected animals, or to environments contaminated by infected animals
- Exposed individuals should monitor for symptoms after first exposure and for 10 days after last exposure



[Avian Influenza Social Media Toolkit | Bird Flu | CDC](#)

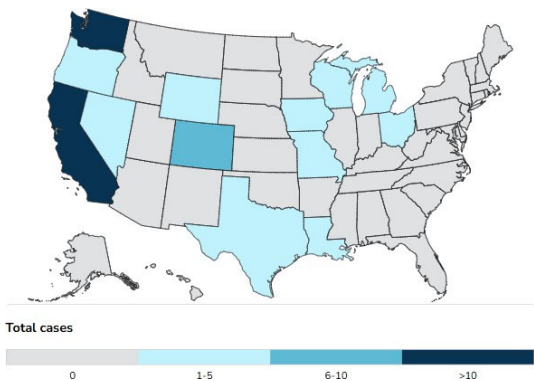
[Highly Pathogenic Avian Influenza A\(H5N1\) Virus in Animals: Interim Recommendations for Prevention, Monitoring, and Public Health Investigations | Avian Influenza \(Flu\) \(cdc.gov\)](#)

11

Confirmed Human Cases of HPAI A(H5) in the United States: March 2024 – April 2025

National situation summary

Person-to-person spread <div>NONE</div> There is no known person-to-person spread at this time.	Current public health risk <div>LOW</div> The current public health risk is Low.
Cases in the U.S. <div>70 cases</div>	Deaths in U.S. <div>1 death</div>



[H5 Bird Flu: Current Situation | Bird Flu | CDC](#)

Data as of 5/8/25

1

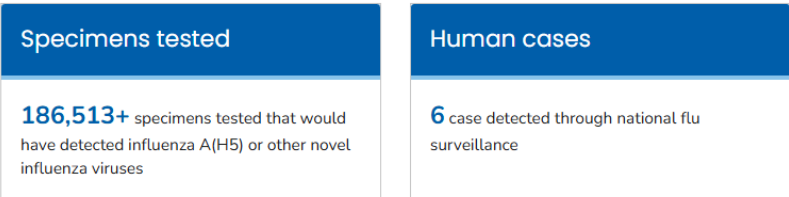
2

Ongoing Human Monitoring

Targeted H5 surveillance (since March 24, 2024)



National flu surveillance (since February 25, 2024)



H5 Bird Flu: Current Situation | Bird Flu |
Data as of 5/8/25

Source of Exposure for Confirmed Human Cases of H5

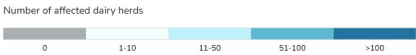
National Total Cases: 70

Cases	Exposure Source
41	Dairy Herds (Cattle)*
24	Poultry Farms and Cutting Operations*
2	Other Animal Exposure†
3	Exposure Source Unknown‡

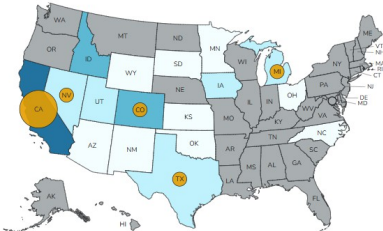
NOTE: One additional case was previously detected in a poultry worker in Colorado in 2022. Louisiana reported the first H5 bird flu death in the U.S.

*Exposure Associated with Commercial Agriculture and Related Operations
†Exposure was related to other animals such as backyard flocks, wild birds, or other mammals
‡Exposure source was not able to be identified

<https://www.cdc.gov/bird-flu/situation-summary/index.html>

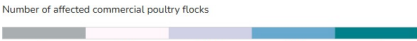


Total human cases exposed to dairy herds

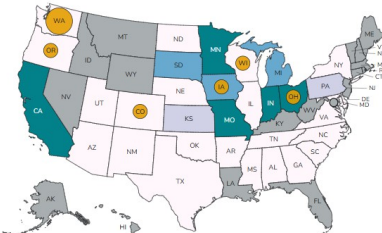


https://www.cdc.gov/bird-flu/h5-monitoring/index.html?CDC_AA_reVal=https%3A%2F%2Fwww.cdc.gov%2Fflu%2Favianflu%2FH5-monitoring.html

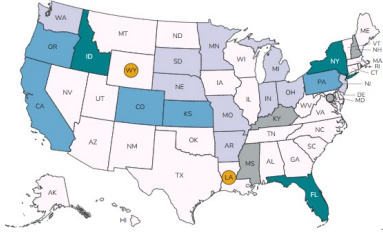
Data as of 5/8/25



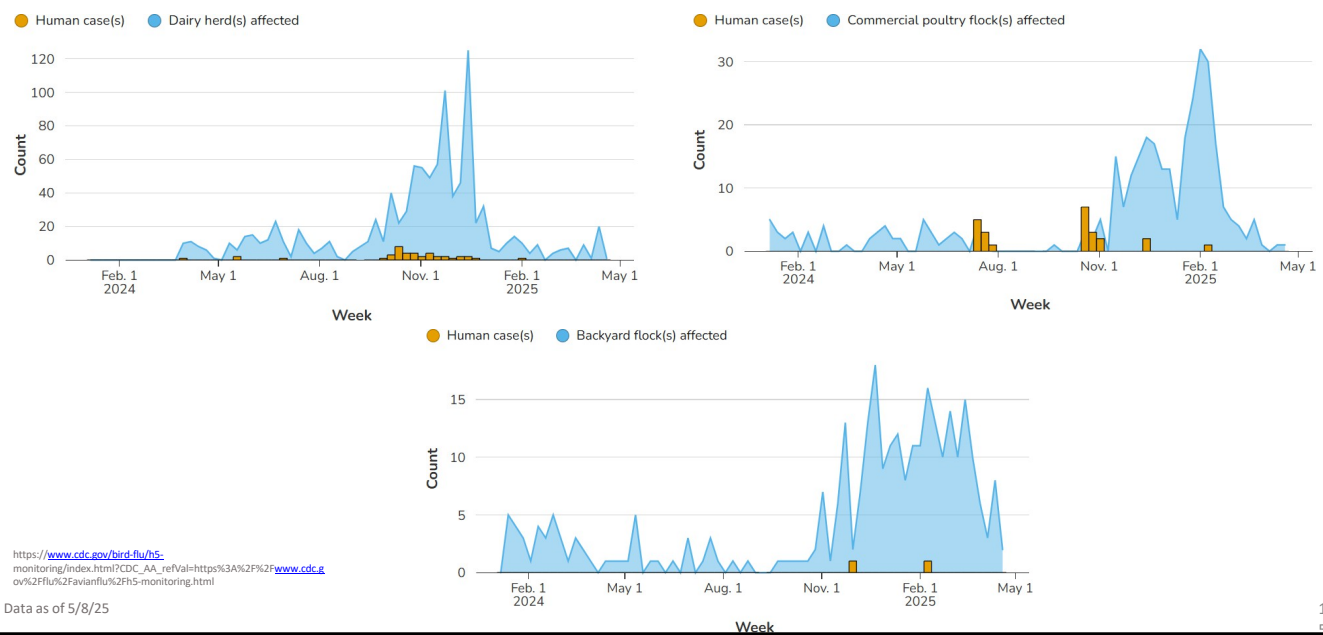
Total human cases exposed to commercial poultry flocks



Total human cases exposed to backyard flocks

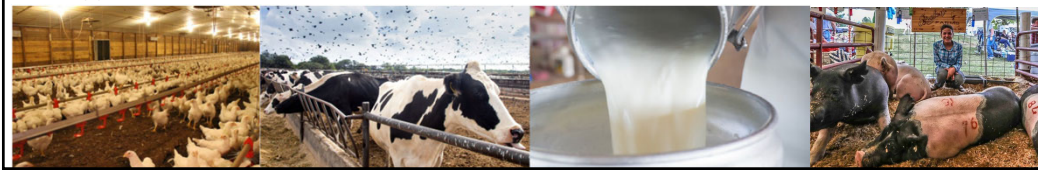
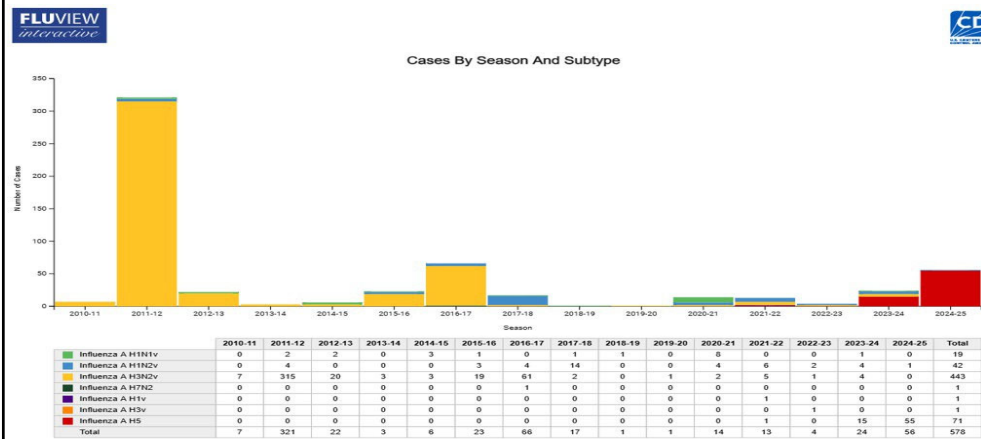


Human Cases Exposed to H5 Infected Animals



Influenza in the Summer

Don't Forget about Influenza Just Because It's Summer



SUMMER CAMP

CDC

THIS FAIR SEASON
TAKE ACTIONS TO PREVENT THE SPREAD OF FLU BETWEEN ANIMALS AND PEOPLE.

CDC

Thank you!

Any questions?

Alicia Budd

ABudd@cdc.gov

For more information, contact CDC
1-800-CDC-INFO (232-4636)
TTY: 1-888-232-6348 www.cdc.gov

The findings and conclusions in this report are those of the authors and do not necessarily represent the official position of the Centers for Disease Control and Prevention.

