
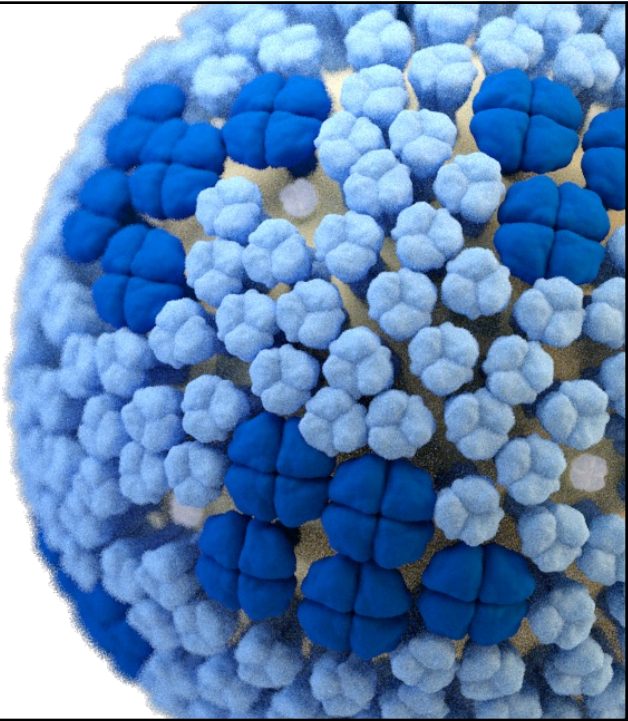


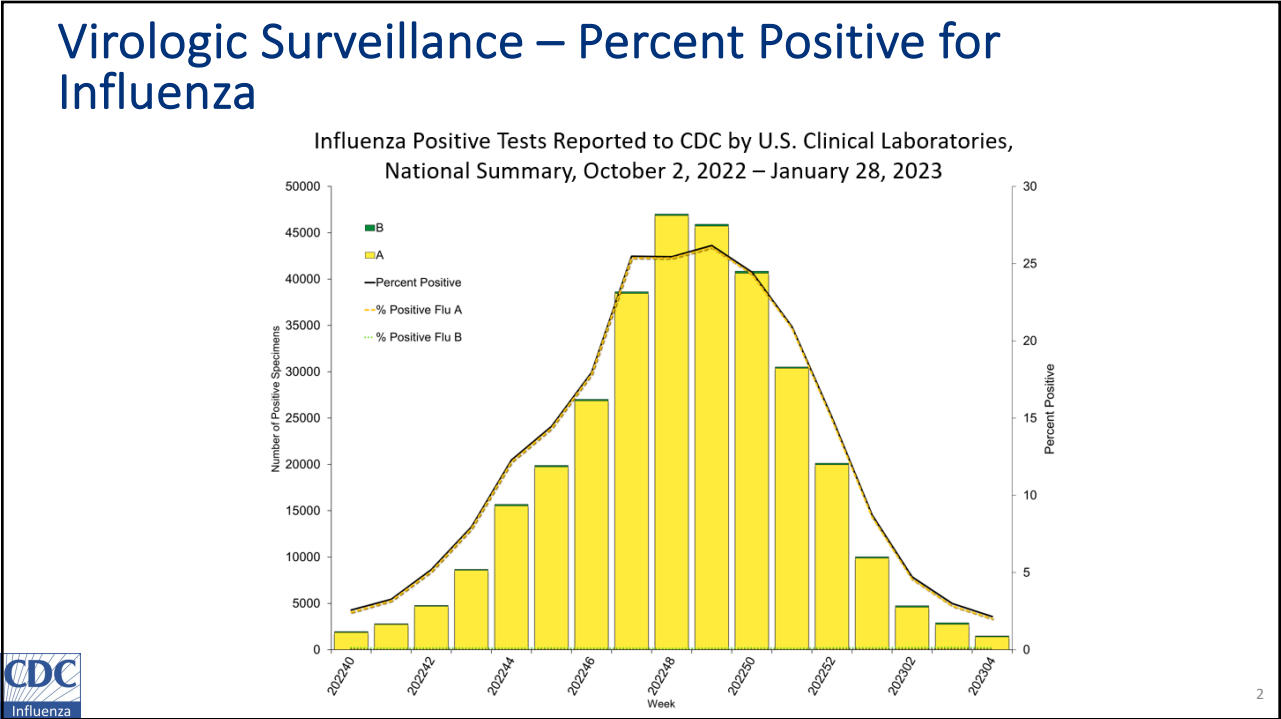
INFLUENZA ACTIVITY UPDATE: 2022-2023 Influenza Season

February 9, 2023

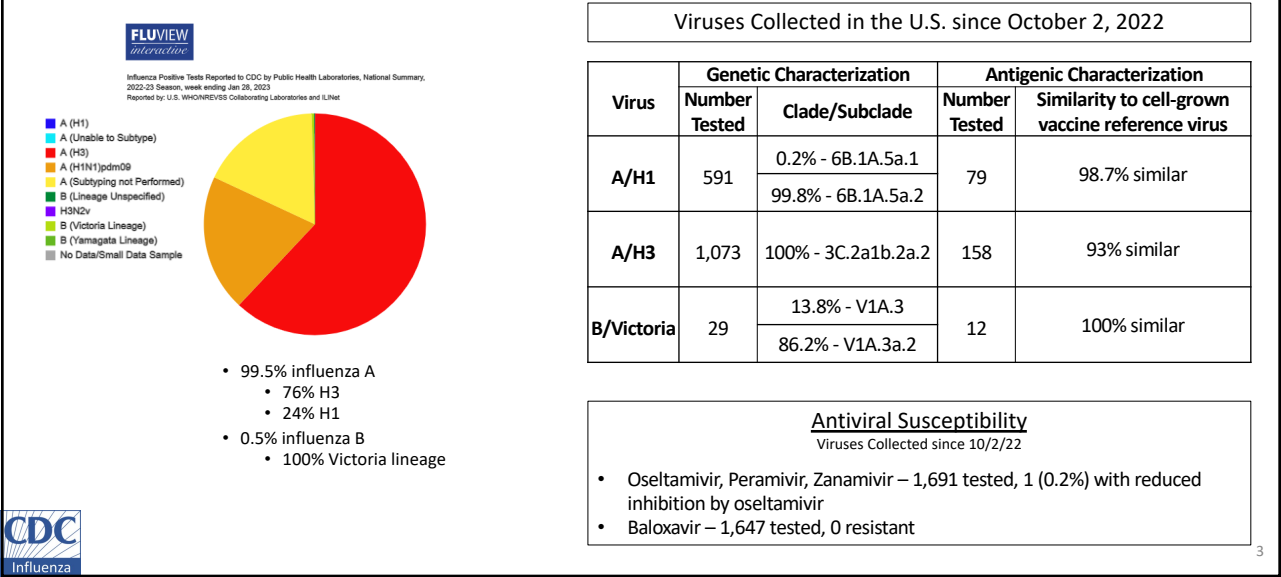
Alicia Budd, MPH
Influenza Division, CDC



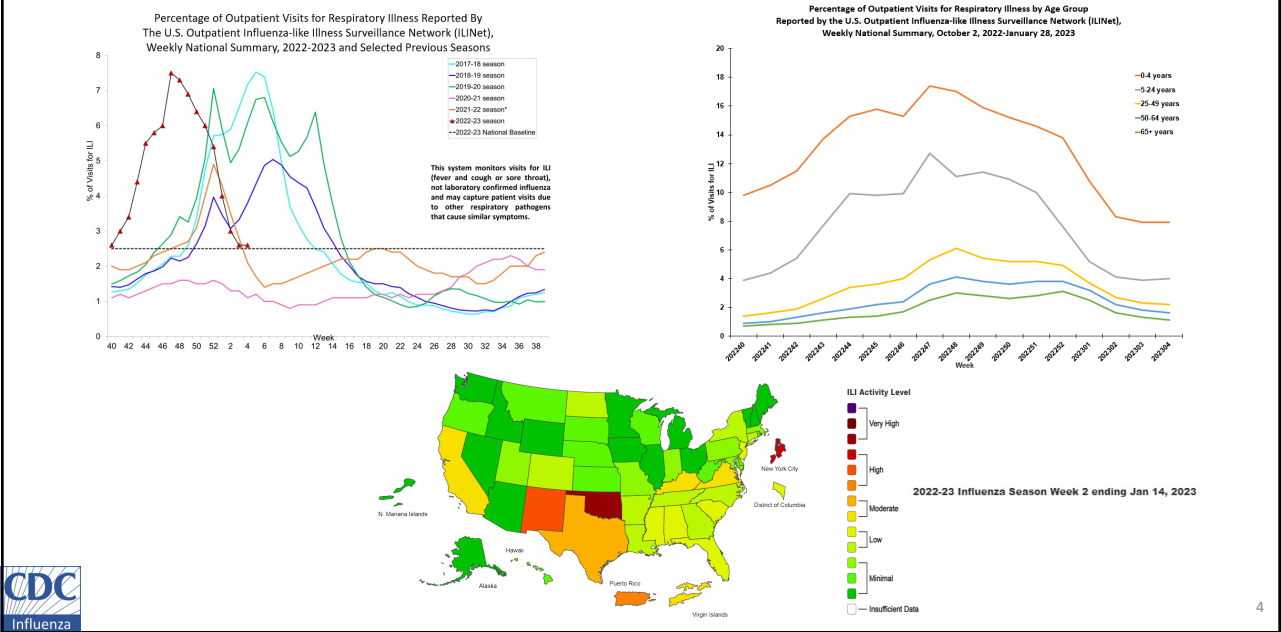




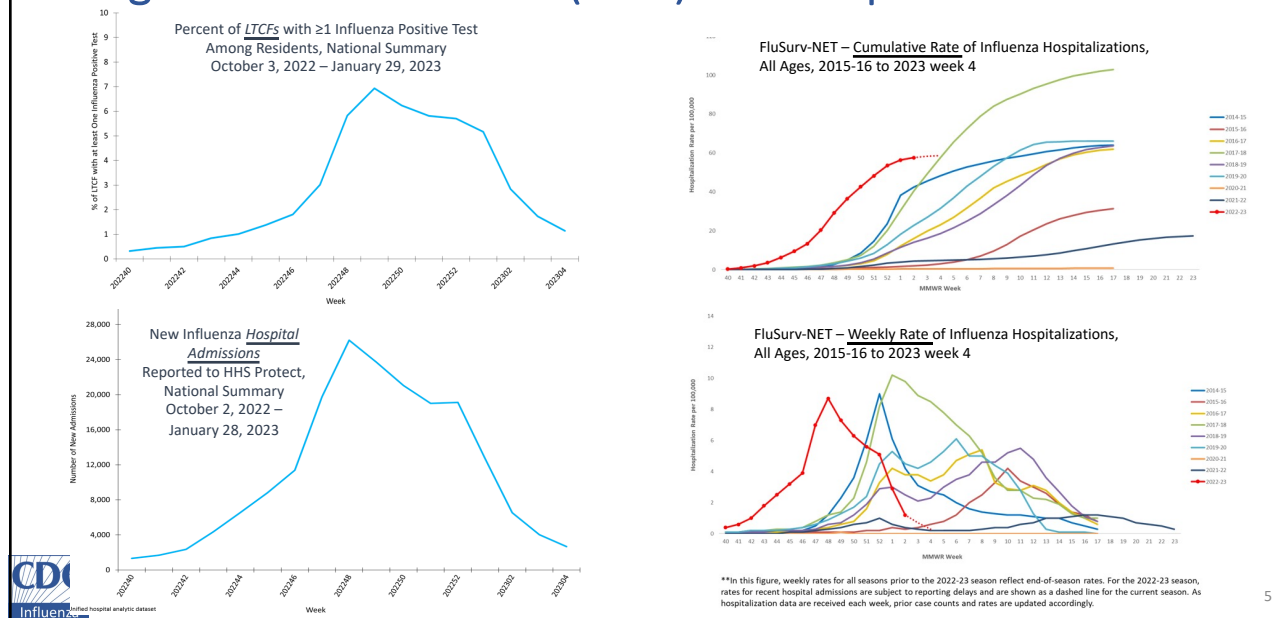
Virologic Surveillance – Virus Characteristics



Outpatient Respiratory Illness

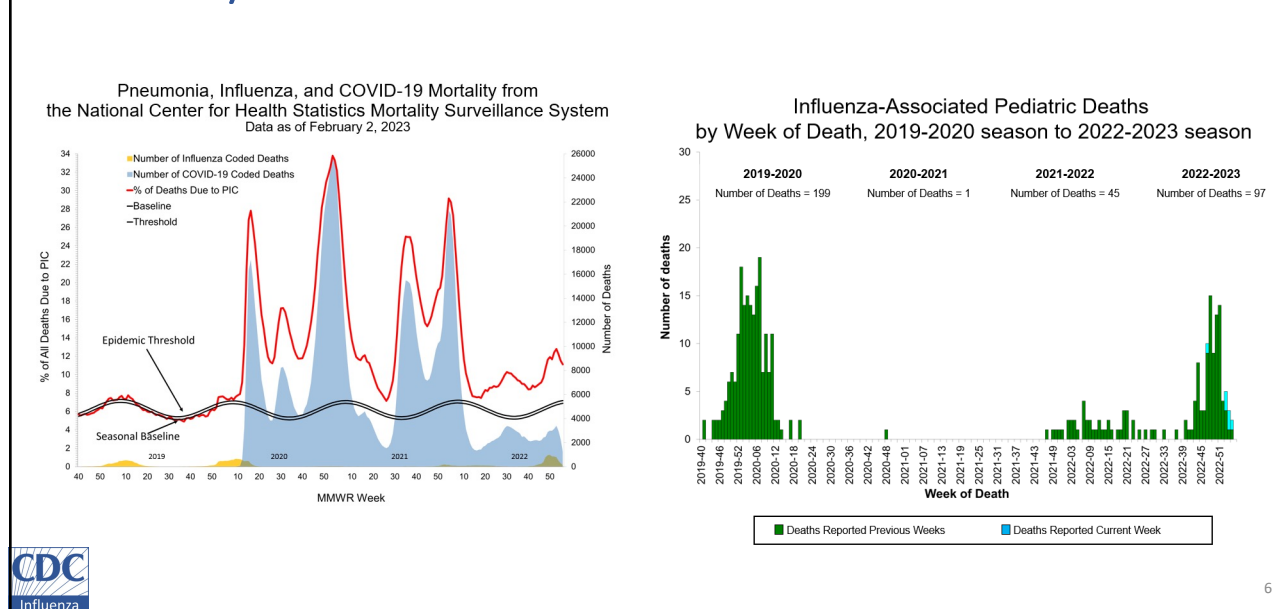


Long-term Care Facilities (LTCF) and Hospitals



5

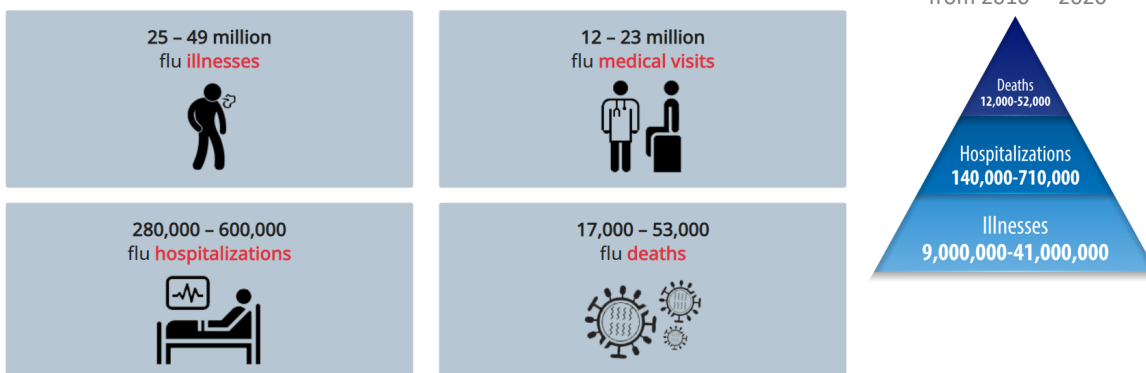
Mortality



6

Preliminary In-Season Burden Estimates, 2022-23

CDC estimates* that, from **October 1, 2022** through **January 28, 2023**, there have been:



*Because influenza surveillance does not capture all cases of flu that occur in the U.S., CDC provides these estimated ranges to better reflect the larger burden of influenza. These estimates are calculated based on data collected through CDC's Influenza Hospitalization Surveillance Network (FluSurv-NET) and are **preliminary**.

7

Summary

- Influenza activity continues to decline across the country.
- H3N2 remains the predominant virus.
- Declining activity ≠ no activity
- Surveillance continues year-round
- Upcoming meetings
 - ACIP on Feb. 22 - interim VE estimates
 - WHO's Vaccine Consultation Meeting – Feb. 20 - 24



8

Questions?
abudd@cdc.gov

For more information, contact CDC
1-800-CDC-INFO (232-4636)
TTY: 1-888-232-6348 www.cdc.gov

The findings and conclusions in this report are those of the authors and do not necessarily represent the official position of the Centers for Disease Control and Prevention.

